



Nuclear Receptor NR4A1 (Phospho-Ser351) Antibody

Catalog No	BYab-03301
Isotype	IgG
Reactivity	Human; Mouse; Rat
Applications	WB; ELISA
Gene Name	NR4A1 GFRP1 HMR NAK1
Protein Name	Nuclear Receptor NR4A1 (Phospho-Ser351)
Immunogen	Synthesized pospho peptide derived from human Nuclear Receptor NR4A1 (Phospho-Ser351)
Specificity	This antibody detects endogenous pospho levels of human Nuclear Receptor NR4A1 (Phospho-Ser351)
Formulation	Liquid in PBS containing 50% glycerol, 0.5% BSA and 0.02% sodium azide.
Source	Polyclonal, Rabbit,IgG
Purification	The antibody was affinity-purified from mouse ascites by affinity-chromatography using specific immunogen.
Dilution	WB 1:500-2000, ELISA(peptide)1:5000-20000
Concentration	1 mg/ml
Purity	≥90%
Storage Stability	-20°C/1 year
Synonyms	Nuclear receptor subfamily 4 group A member 1 (Early response protein NAK1;Nuclear hormone receptor NUR/77;Nur77;Orphan nuclear receptor HMR;Orphan nuclear receptor TR3;ST-59;Testicular receptor 3)
Observed Band	77kD
Cell Pathway	Nucleus . Cytoplasm . Mitochondrion . Nuclear export to the cytoplasm is XPO1-mediated and positively regulated by IFI27 (PubMed:22427340). Translocation to the mitochondrion upon interaction with RXRA and upon the presence of 9-cis retinoic acid (PubMed:17761950). .
Tissue Specificity	Fetal muscle and adult liver, brain and thyroid.
Function	function:Orphan nuclear receptor.,induction:By growth-stimulating agents.,similarity:Belongs to the nuclear hormone receptor family.,similarity:Belongs to the nuclear hormone receptor family. NR4 subfamily.,similarity:Contains 1 nuclear receptor DNA-binding domain.,subunit:Interacts with GADD45GIP1.,tissue specificity:Fetal muscle and adult liver, brain and thyroid.,

Nanjing BYabscience technology Co.,Ltd



Background

This gene encodes a member of the steroid-thyroid hormone-retinoid receptor superfamily. Expression is induced by phytohemagglutinin in human lymphocytes and by serum stimulation of arrested fibroblasts. The encoded protein acts as a nuclear transcription factor. Translocation of the protein from the nucleus to mitochondria induces apoptosis. Multiple transcript variants encoding different isoforms have been found for this gene. [provided by RefSeq, Jan 2011],

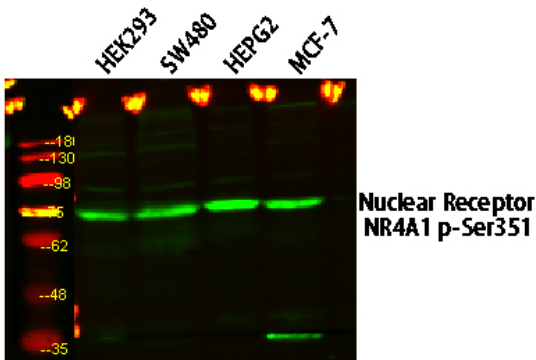
matters needing attention

Avoid repeated freezing and thawing!

Usage suggestions

This product can be used in immunological reaction related experiments. For more information, please consult technical personnel.

Products Images



Western blot analysis of various lysates, primary antibody was diluted at 1:1000, 4° over night, secondary antibody(cat: RS23920)was diluted at 1:10000, 37° 1hour.