



# TBLR1 mouse mAb

<b>Catalog No</b>	BYab-03267
<b>Isotype</b>	IgG
<b>Reactivity</b>	Human;Mouse
<b>Applications</b>	WB;IHC;ICC
<b>Gene Name</b>	tbl1xr1
<b>Protein Name</b>	
<b>Immunogen</b>	Purified recombinant human TBLR1 protein fragments expressed in E.coli.
<b>Specificity</b>	This antibody detects endogenous levels of TBLR1 and does not cross-react with related proteins.
<b>Formulation</b>	Liquid in PBS containing 50% glycerol, 0.5% BSA and 0.02% sodium azide.
<b>Source</b>	Monoclonal, Mouse
<b>Purification</b>	The antibody was affinity-purified from mouse ascites by affinity-chromatography using epitope-specific immunogen.
<b>Dilution</b>	wb 1:1000 icc 1:200 1:500-1:1000
<b>Concentration</b>	1 mg/ml
<b>Purity</b>	≥90%
<b>Storage Stability</b>	-20°C/1 year
<b>Synonyms</b>	C21;DC42;F box like/WD repeat containing protein TBL1XR1;F-box-like/WD repeat-containing protein TBL1XR1;FLJ12894;IRA1;Nuclear receptor corepressor/HDAC3 complex subunit;Nuclear receptor corepressor/HDAC3 complex subunit TBLR1;TBL1 related protein 1;TBL1-related protein 1;TBL1R_HUMAN;TBL1XR1;Transducin (beta) like 1 X linked receptor 1;Transducin beta like 1X related protein 1;Transducin beta-like 1X-related protein 1.
<b>Observed Band</b>	60kD
<b>Cell Pathway</b>	Nucleus .
<b>Tissue Specificity</b>	Widely expressed including the pituitary, hypothalamus, white and brown adipose tissue, muscle and liver.
<b>Function</b>	domain:The F-box-like domain is related to the F-box domain, and apparently displays the same function as component of ubiquitin E3 ligase complexes.,function:F-box-like protein involved in the recruitment of the

Nanjing BYabscience technology Co.,Ltd



ubiquitin/19S proteasome complex to nuclear receptor-regulated transcription units. Plays an essential role in transcription activation mediated by nuclear receptors. Probably acts as integral component of the N-CoR corepressor complex that mediates the recruitment of the 19S proteasome complex, leading to the subsequent proteosomal degradation of N-CoR complex, thereby allowing cofactor exchange, and transcription activation. PTM:Phosphorylated upon DNA damage, probably by ATM or ATR. sequence caution:Contaminating sequence. Potential poly-A sequence. similarity:Belongs to the WD repeat EBI family. similarity:Contains 1 F-box-like domain. similarity:Contains 1 LisH domain. simi

#### Background

This gene is a member of the WD40 repeat-containing gene family and shares sequence similarity with transducin (beta)-like 1X-linked (TBL1X). The protein encoded by this gene is thought to be a component of both nuclear receptor corepressor (N-CoR) and histone deacetylase 3 (HDAC 3) complexes, and is required for transcriptional activation by a variety of transcription factors. Mutations in these gene have been associated with some autism spectrum disorders, and one finding suggests that haploinsufficiency of this gene may be a cause of intellectual disability with dysmorphism. Mutations in this gene as well as recurrent translocations involving this gene have also been observed in some tumors. [provided by RefSeq, Mar 2016],

#### matters needing attention

Avoid repeated freezing and thawing!

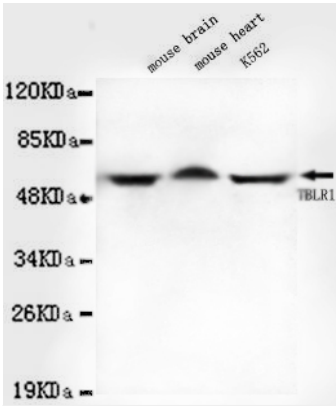
#### Usage suggestions

This product can be used in immunological reaction related experiments. For more information, please consult technical personnel.

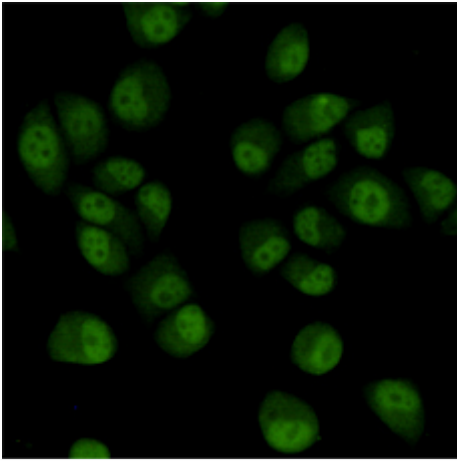
Nanjing BYabscience technology Co.,Ltd



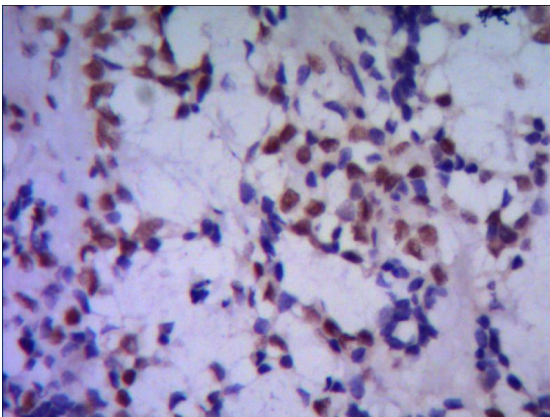
## Products Images



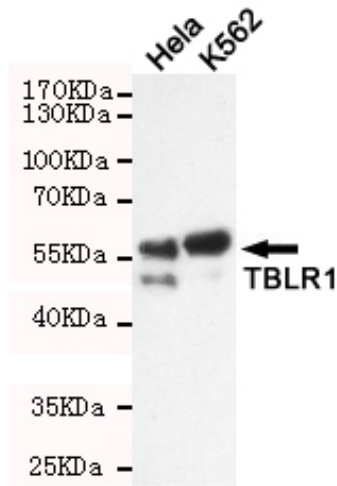
Western blot detection of TBLR1 in Mouse brain, Mouse heart and K562 cell lysates using TBLR1 mouse mAb (1:1000 diluted). Predicted band size: 60KDa. Observed band size: 60Kda.



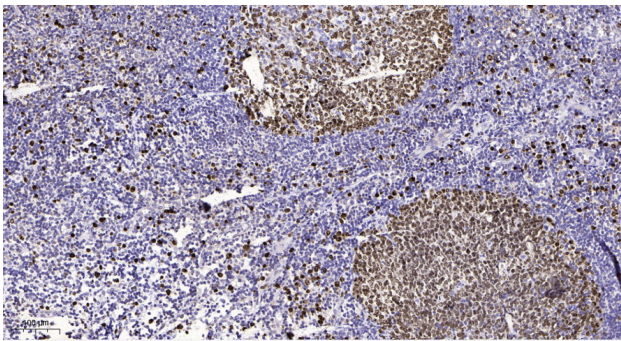
Immunocytochemistry staining of HeLa cells fixed with 4% Paraformaldehyde and using TBLR1 mouse mAb (dilution 1:200).



IHC of paraffin-embedded human breast cancer using anti-TBLR1 mouse mAb diluted 1/500-1/1000



Western blot detection of TBLR1 in HeLa and K562 cell lysates using TBLR1 mouse mAb (1:1000 diluted). Predicted band size: 60KDa. Observed band size: 60Kda.



Immunohistochemical analysis of paraffin-embedded human tonsil. 1, Antibody was diluted at 1:200(4° overnight). 2, Tris-EDTA, pH9.0 was used for antigen retrieval. 3, Secondary antibody was diluted at 1:200(room temperature, 45min).