



WAVE4 Polyclonal Antibody

Catalog No	BYab-03217
Isotype	IgG
Reactivity	Human;Rat;Mouse;
Applications	IHC;IF;ELISA
Gene Name	WASF4
Protein Name	Putative Wiskott-Aldrich syndrome protein family member 4
Immunogen	The antiserum was produced against synthesized peptide derived from human WASF4. AA range:190-239
Specificity	WAVE4 Polyclonal Antibody detects endogenous levels of WAVE4 protein.
Formulation	Liquid in PBS containing 50% glycerol, 0.5% BSA and 0.02% sodium azide.
Source	Polyclonal, Rabbit,IgG
Purification	The antibody was affinity-purified from rabbit antiserum by affinity-chromatography using epitope-specific immunogen.
Dilution	IHC: 1/100 - 1/300. ELISA: 1/10000.. IF 1:50-200
Concentration	1 mg/ml
Purity	≥90%
Storage Stability	-20°C/1 year
Synonyms	
Observed Band	68kD
Cell Pathway	
Tissue Specificity	
Function	
Background	WASF4P (WAS protein family member 4, pseudogene) is a pseudogene belonging to the family of genes encoding Wiskott-Aldrich syndrome (WAS) proteins, which are involved in the transmission of signals to the actin cytoskeleton. Wiskott-Aldrich syndrome is a disease of the immune system. This pseudogene, which is apparently not transcribed, most closely resembles WASF4P encoding the WAS protein family member 2, which is located on chromosome 1.

Nanjing BYabscience technology Co.,Ltd



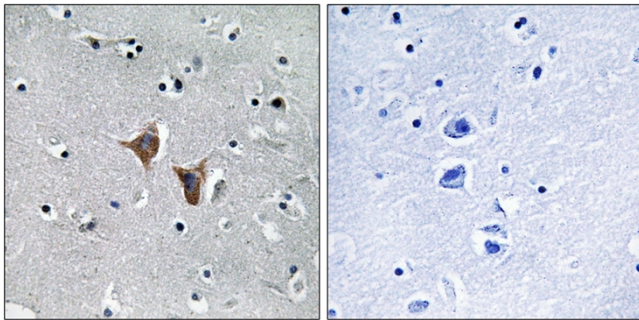
matters needing attention

Avoid repeated freezing and thawing!

Usage suggestions

This product can be used in immunological reaction related experiments. For more information, please consult technical personnel.

Products Images



Immunohistochemistry analysis of paraffin-embedded human brain, using WASF4 Antibody. The picture on the right is blocked with the synthesized peptide.