



# WAVE3 Polyclonal Antibody

|                           |   |
|---------------------------|---|
| <b>Catalog No</b>         | BYab-03216  |
| <b>Isotype</b>            | IgG   |
| <b>Reactivity</b>         | Human;Mouse   |
| <b>Applications</b>       | WB;IHC;IF;ELISA   |
| <b>Gene Name</b>          | WASF3   |
| <b>Protein Name</b>       | Wiskott-Aldrich syndrome protein family member 3  |
| <b>Immunogen</b>          | The antiserum was produced against synthesized peptide derived from human WASF3. AA range:151-200   |
| <b>Specificity</b>        | WAVE3 Polyclonal Antibody detects endogenous levels of WAVE3 protein.   |
| <b>Formulation</b>        | Liquid in PBS containing 50% glycerol, 0.5% BSA and 0.02% sodium azide.   |
| <b>Source</b>             | Polyclonal, Rabbit,IgG  |
| <b>Purification</b>       | The antibody was affinity-purified from rabbit antiserum by affinity-chromatography using epitope-specific immunogen.   |
| <b>Dilution</b>           | WB: 1/500 - 1/2000. IHC: 1/100 - 1/300. ELISA: 1/10000.. IF 1:50-200  |
| <b>Concentration</b>      | 1 mg/ml   |
| <b>Purity</b>             | ≥90%  |
| <b>Storage Stability</b>  | -20°C/1 year  |
| <b>Synonyms</b>           | WASF3; KIAA0900; SCAR3; WAVE3; Wiskott-Aldrich syndrome protein family member 3; WASP family protein member 3; Protein WAVE-3; Verprolin homology domain-containing protein 3   |
| <b>Observed Band</b>      | 55kD  |
| <b>Cell Pathway</b>       | Cytoplasm, cytoskeleton.  |
| <b>Tissue Specificity</b> | Expressed in ovary and brain.   |
| <b>Function</b>           | domain: Binds the Arp2/3 complex through the C-terminal region and actin through verprolin homology (VPH) domain.,function: Downstream effector molecules involved in the transmission of signals from tyrosine kinase receptors and small GTPases to the actin cytoskeleton.,similarity: Belongs to the SCAR/WAVE family.,similarity: Contains 1 WH2 domain.,subunit: Binds actin and the Arp2/3 complex.,tissue specificity: Expressed in ovary and brain., |
| <b>Background</b>         | This gene encodes a member of the Wiskott-Aldrich syndrome protein family. The gene product is a protein that forms a multiprotein complex that links receptor  |

Nanjing BYabscience technology Co.,Ltd



kinases and actin. Binding to actin occurs through a C-terminal verprolin homology domain in all family members. The multiprotein complex serves to transduce signals that involve changes in cell shape, motility or function. A pseudogene of this gene have been defined on chromosome 6. Alternative splicing results in multiple transcript variants [provided by RefSeq, May 2014],

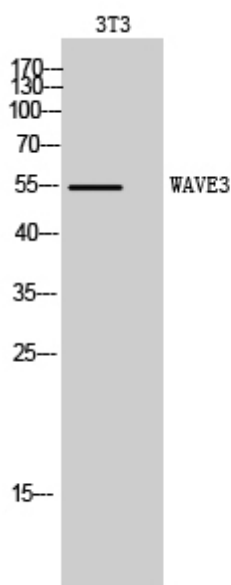
**matters needing attention**

Avoid repeated freezing and thawing!

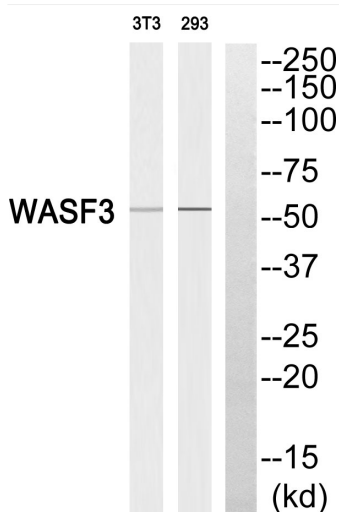
**Usage suggestions**

This product can be used in immunological reaction related experiments. For more information, please consult technical personnel.

## Products Images



Western Blot analysis of 3T3 cells using WAVE3 Polyclonal Antibody. Secondary antibody(catalog#:RS0002) was diluted at 1:20000



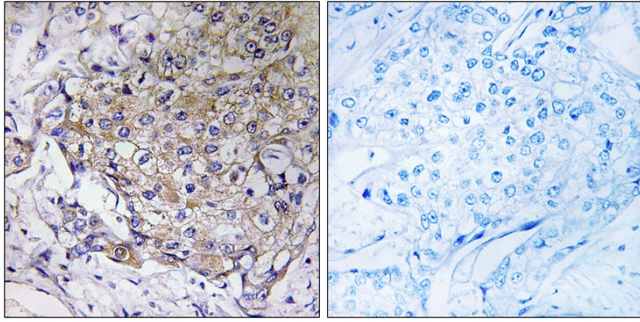
Western blot analysis of WASF3 Antibody. The lane on the right is blocked with the WASF3 peptide.



YT4899\_3.jpg

ERROR 42

Nanjing BYabscience technology Co.,Ltd



Immunohistochemistry analysis of paraffin-embedded human breast carcinoma tissue, using WASF3 Antibody. The picture on the right is blocked with the synthesized peptide.