



# Tensin3 Polyclonal Antibody

<b>Catalog No</b>	BYab-03198
<b>Isotype</b>	IgG
<b>Reactivity</b>	Human;Rat;Mouse;
<b>Applications</b>	IHC;IF;ELISA
<b>Gene Name</b>	TNS3
<b>Protein Name</b>	Tensin-3
<b>Immunogen</b>	The antiserum was produced against synthesized peptide derived from human TENS3. AA range:541-590
<b>Specificity</b>	Tensin3 Polyclonal Antibody detects endogenous levels of Tensin3 protein.
<b>Formulation</b>	Liquid in PBS containing 50% glycerol, 0.5% BSA and 0.02% sodium azide.
<b>Source</b>	Polyclonal, Rabbit,IgG
<b>Purification</b>	The antibody was affinity-purified from rabbit antiserum by affinity-chromatography using epitope-specific immunogen.
<b>Dilution</b>	Immunohistochemistry: 1/100 - 1/300. Immunofluorescence: 1/200 - 1/1000. ELISA: 1/20000. Not yet tested in other applications.
<b>Concentration</b>	1 mg/ml
<b>Purity</b>	≥90%
<b>Storage Stability</b>	-20°C/1 year
<b>Synonyms</b>	TNS3; TEM6; TENS1; TPP; Tensin-3; Tensin-like SH2 domain-containing protein 1; Tumor endothelial marker 6
<b>Observed Band</b>	
<b>Cell Pathway</b>	Cell junction, focal adhesion .
<b>Tissue Specificity</b>	Expressed in umbilical vein endothelial cells, epithelial cells, and fibroblasts cells (at protein level). Highly expressed in thyroid, kidney and placenta. Low expression in heart, skeletal muscle, spleen, liver, and lung. Expressed in tumor endothelial cells. Expression seems to be down-regulated in thyroid tumor tissues and in anaplastic carcinomas.
<b>Function</b>	function:May play a role in actin remodeling. Involved in the dissociation of the integrin-tensin-actin complex. EGF activates TNS4 and down-regulates TNS3 which results in capping the tail of ITGB1. Seems to be involved in mammary cell migration. May be involved in cell migration and bone development.,induction:EGF induces down-regulation.,PTM:Epidermal growth factor(EGF) induces tyrosine phosphorylation in a time- and dose-dependent manner.,similarity:Contains 1 C2 tensin-type domain.,similarity:Contains 1

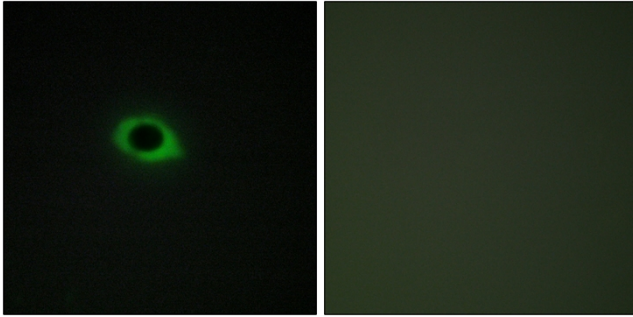
Nanjing BYabscience technology Co.,Ltd



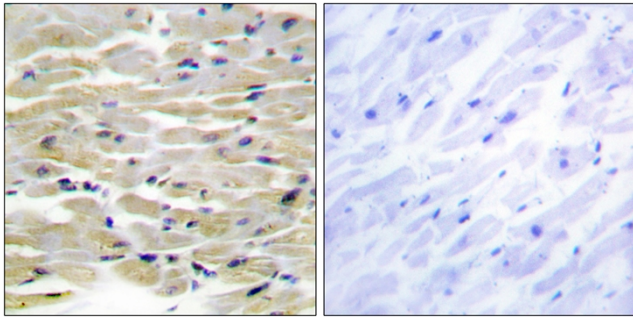
	phosphatase tensin-type domain.,similarity:Contains 1 SH2 domain.,subunit:EGF promotes the interaction with EGFR. Interacts with PTK2 and BCAR1. Tyrosine phosphorylation is critical for these interactions.,tissue specificity:Expressed in umbilical vein endothelial cells, epithelial cells, and fibroblasts cells (at protein level). Highly expressed in thyroid, kidney and placenta. Low
<b>Background</b>	function:May play a role in actin remodeling. Involved in the dissociation of the integrin-tensin-actin complex. EGF activates TNS4 and down-regulates TNS3 which results in capping the tail of ITGB1. Seems to be involved in mammary cell migration. May be involved in cell migration and bone development.,induction:EGF induces down-regulation.,PTM:Epidermal growth factor(EGF) induces tyrosine phosphorylation in a time- and dose-dependent manner.,similarity:Contains 1 C2 tensin-type domain.,similarity:Contains 1 phosphatase tensin-type domain.,similarity:Contains 1 SH2 domain.,subunit:EGF promotes the interaction with EGFR. Interacts with PTK2 and BCAR1. Tyrosine phosphorylation is critical for these interactions.,tissue specificity:Expressed in umbilical vein endothelial cells, epithelial cells, and fibroblasts cells (at protein level). Highly expressed in thyroid, kidney and placenta. Low expression in heart, skeletal muscle, spleen, liver, and lung. Expressed in tumor endothelial cells. Expression seems to be down-regulated in thyroid tumor tissues and in anaplastic carcinomas.,
<b>matters needing attention</b>	Avoid repeated freezing and thawing!
<b>Usage suggestions</b>	This product can be used in immunological reaction related experiments. For more information, please consult technical personnel.



## Products Images



Immunofluorescence analysis of COS7 cells, using TENS3 Antibody. The picture on the right is blocked with the synthesized peptide.



Immunohistochemistry analysis of paraffin-embedded human heart tissue, using TENS3 Antibody. The picture on the right is blocked with the synthesized peptide.