



# Synphilin-1 Polyclonal Antibody

<b>Catalog No</b>	BYab-03190
<b>Isotype</b>	IgG
<b>Reactivity</b>	Human;Mouse
<b>Applications</b>	WB;IHC;IF;ELISA
<b>Gene Name</b>	SNCAIP
<b>Protein Name</b>	Synphilin-1
<b>Immunogen</b>	The antiserum was produced against synthesized peptide derived from human Synphilin-1. AA range:797-846
<b>Specificity</b>	Synphilin-1 Polyclonal Antibody detects endogenous levels of Synphilin-1 protein.
<b>Formulation</b>	Liquid in PBS containing 50% glycerol, 0.5% BSA and 0.02% sodium azide.
<b>Source</b>	Polyclonal, Rabbit,IgG
<b>Purification</b>	The antibody was affinity-purified from rabbit antiserum by affinity-chromatography using epitope-specific immunogen.
<b>Dilution</b>	WB: 1/500 - 1/2000. IHC: 1/100 - 1/300. ELISA: 1/10000.. IF 1:50-200
<b>Concentration</b>	1 mg/ml
<b>Purity</b>	≥90%
<b>Storage Stability</b>	-20°C/1 year
<b>Synonyms</b>	SNCAIP; Synphilin-1; Sph1; Alpha-synuclein-interacting protein
<b>Observed Band</b>	100kD
<b>Cell Pathway</b>	Cytoplasm . Detected in cytoplasmic inclusion bodies, together with SNCA.
<b>Tissue Specificity</b>	Detected in brain (at protein level). Widely expressed, with highest levels in brain, heart and placenta.
<b>Function</b>	disease:Defects in SNCAIP are a cause of Parkinson disease (PD) [MIM:168600]. PD is a complex, multifactorial disorder that typically manifests after the age of 50 years, although early-onset cases (before 50 years) are known. PD generally arises as a sporadic condition but is occasionally inherited as a simple mendelian trait. Although sporadic and familial PD are very similar, inherited forms of the disease usually begin at earlier ages and are associated with atypical clinical features. PD is characterized by bradykinesia, resting tremor, muscular rigidity and postural instability, as well as by a clinically significant response to treatment with levodopa. The pathology involves the loss of dopaminergic neurons in the substantia nigra and the presence of Lewy bodies (intraneuronal accumulations of aggregated proteins), in surviving neurons in various areas of the

Nanjing BYabscience technology Co.,Ltd



brain.,miscellaneous:

**Background**

This gene encodes a protein containing several protein-protein interaction domains, including ankyrin-like repeats, a coiled-coil domain, and an ATP/GTP-binding motif. The encoded protein interacts with alpha-synuclein in neuronal tissue and may play a role in the formation of cytoplasmic inclusions and neurodegeneration. A mutation in this gene has been associated with Parkinson's disease. Alternative splicing results in multiple transcript variants. [provided by RefSeq, Apr 2015],

**matters needing attention**

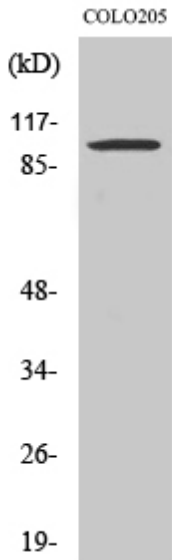
Avoid repeated freezing and thawing!

**Usage suggestions**

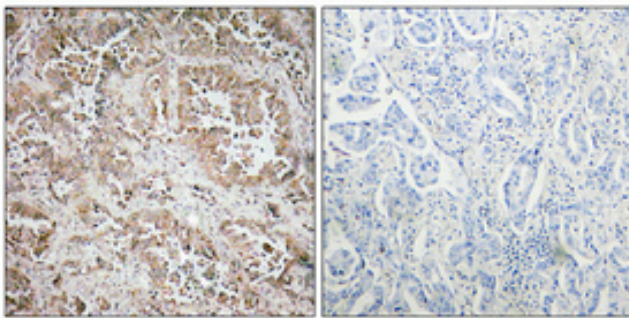
This product can be used in immunological reaction related experiments. For more information, please consult technical personnel.



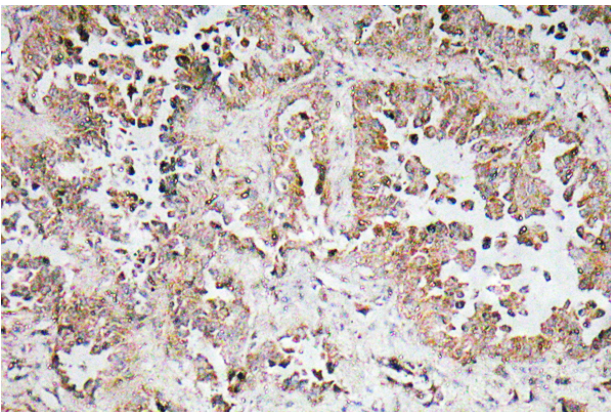
## Products Images



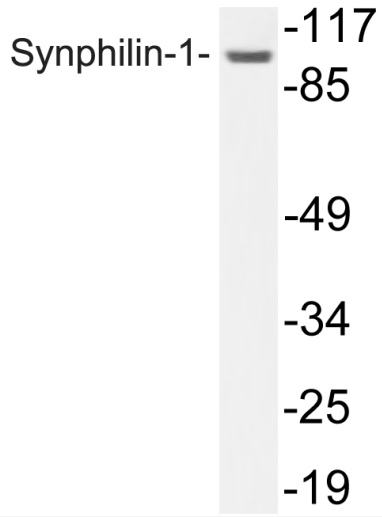
Western Blot analysis of various cells using Synphilin-1 Polyclonal Antibody



Immunohistochemical analysis of paraffin-embedded Human lung cancer. Antibody was diluted at 1:100(4° overnight). High-pressure and temperature Tris-EDTA,pH8.0 was used for antigen retrieval. Negative control (right) obtained from antibody was pre-absorbed by immunogen peptide.



Immunohistochemistry analysis of Synphilin-1 antibody in paraffin-embedded lung carcinoma. tissue.



Western blot analysis of lysate from COLO205, using Synphilin-1 antibody.