



SPZ1 Polyclonal Antibody

Catalog No	BYab-03189
Isotype	IgG
Reactivity	Human;Rat;Mouse;
Applications	IHC;IF;WB;ELISA
Gene Name	SPZ1
Protein Name	Spermatogenic leucine zipper protein 1
Immunogen	The antiserum was produced against synthesized peptide derived from human SPZ1. AA range:111-160
Specificity	SPZ1 Polyclonal Antibody detects endogenous levels of SPZ1 protein.
Formulation	Liquid in PBS containing 50% glycerol, 0.5% BSA and 0.02% sodium azide.
Source	Polyclonal, Rabbit,IgG
Purification	The antibody was affinity-purified from rabbit antiserum by affinity-chromatography using epitope-specific immunogen.
Dilution	WB 1:500-2000 Immunohistochemistry: 1/100 - 1/300. Immunofluorescence: 1/200 - 1/1000. ELISA: 1/20000. Not yet tested in other applications.
Concentration	1 mg/ml
Purity	≥90%
Storage Stability	-20°C/1 year
Synonyms	SPZ1; TSP1; Spermatogenic leucine zipper protein 1; Testis-specific protein 1; Testis-specific protein NYD-TSP1
Observed Band	133kD
Cell Pathway	Cytoplasm . Nucleus .
Tissue Specificity	Specifically and strongly expressed in the testis. Expressed in several tumor cell lines.
Function	function:Transcription factor that binds to the DNA sequence 5'-CANNTG-3'(E box) and the G-box motif. May play an important role in the regulation of cell proliferation and differentiation during spermatogenesis.,PTM:Phosphorylated by ERK1 and ERK2.,similarity:Contains 1 basic helix-loop-helix (bHLH) domain.,subunit:Interacts with PPP1CC isoform gamma-2.,tissue specificity:Specifically and strongly expressed in the testis. Expressed in several tumor cell lines.,
Background	This gene encodes a bHLH-zip transcription factor which functions in the mitogen-activate protein kinase (MAPK) signaling pathway. Because of its role in

Nanjing BYabscience technology Co.,Ltd



the upregulation of cell proliferation and tumorigenesis, this gene may serve as a target for Ras-induced tumor treatments. [provided by RefSeq, Oct 2011],

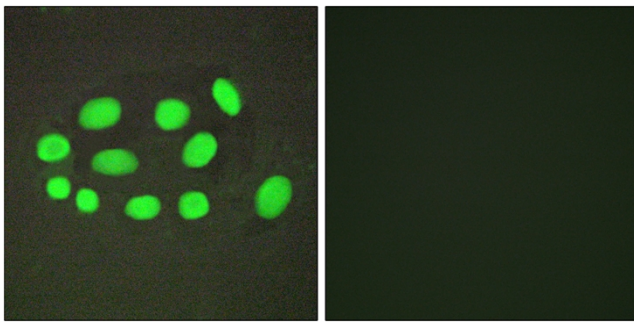
matters needing attention

Avoid repeated freezing and thawing!

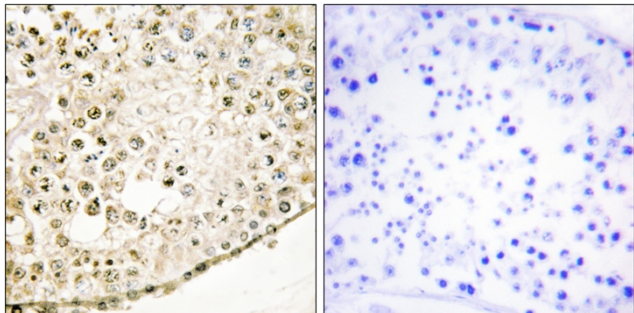
Usage suggestions

This product can be used in immunological reaction related experiments. For more information, please consult technical personnel.

Products Images



Immunofluorescence analysis of A549 cells, using SPZ1 Antibody. The picture on the right is blocked with the synthesized peptide.



Immunohistochemistry analysis of paraffin-embedded human testis tissue, using SPZ1 Antibody. The picture on the right is blocked with the synthesized peptide.