



Sarcoglycan- β Polyclonal Antibody

Catalog No	BYab-03186
Isotype	IgG
Reactivity	Human;Mouse
Applications	WB;IHC;IF;ELISA
Gene Name	SGCB
Protein Name	Beta-sarcoglycan
Immunogen	The antiserum was produced against synthesized peptide derived from human Sarcoglycan-beta. AA range:87-136
Specificity	Sarcoglycan- β Polyclonal Antibody detects endogenous levels of Sarcoglycan- β protein.
Formulation	Liquid in PBS containing 50% glycerol, 0.5% BSA and 0.02% sodium azide.
Source	Polyclonal, Rabbit,IgG
Purification	The antibody was affinity-purified from rabbit antiserum by affinity-chromatography using epitope-specific immunogen.
Dilution	WB: 1/500 - 1/2000. IHC: 1/100 - 1/300. ELISA: 1/40000.. IF 1:50-200
Concentration	1 mg/ml
Purity	$\geq 90\%$
Storage Stability	-20°C/1 year
Synonyms	SGCB; Beta-sarcoglycan; Beta-SG; 43 kDa dystrophin-associated glycoprotein; 43DAG; A3b
Observed Band	43kD
Cell Pathway	Cell membrane, sarcolemma ; Single-pass type II membrane protein . Cytoplasm, cytoskeleton .
Tissue Specificity	Highest expression in heart and skeletal muscle. Low expression in brain, kidney, placenta, pancreas and lung. High expression in fetal brain. Also found in fetal lung, kidney and liver.
Function	disease:Defects in SGCB are the cause of limb-girdle muscular dystrophy type 2E (LGMD2E) [MIM:604286]. LGMD2E is an autosomal recessive disorder.,function:Component of the sarcoglycan complex, a subcomplex of the dystrophin-glycoprotein complex which forms a link between the F-actin cytoskeleton and the extracellular matrix.,online information:SGCB mutations in LGMD2E,PTM:Disulfide bonds are present.,similarity:Belongs to the sarcoglycan beta/delta/gamma/zeta family.,subunit:Cross-link to form 2 major subcomplexes: one consisting of SGCB, SGCD and SGCG and the other consisting of SGCB and SGCD. The association between SGCB and SGCG is particularly strong while

Nanjing BYabscience technology Co.,Ltd



SGCA is loosely associated with the other sarcoglycans.,tissue specificity: Highest expression in heart and skeletal muscle. Low expression in brain, kidney, placenta, pancreas and lung. High expression in fetal brain. Also found in

Background

This gene encodes a member of the sarcoglycan family. Sarcoglycans are transmembrane components in the dystrophin-glycoprotein complex which help stabilize the muscle fiber membranes and link the muscle cytoskeleton to the extracellular matrix. Mutations in this gene have been associated with limb-girdle muscular dystrophy.[provided by RefSeq, Oct 2008],

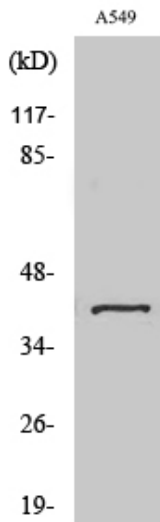
matters needing attention

Avoid repeated freezing and thawing!

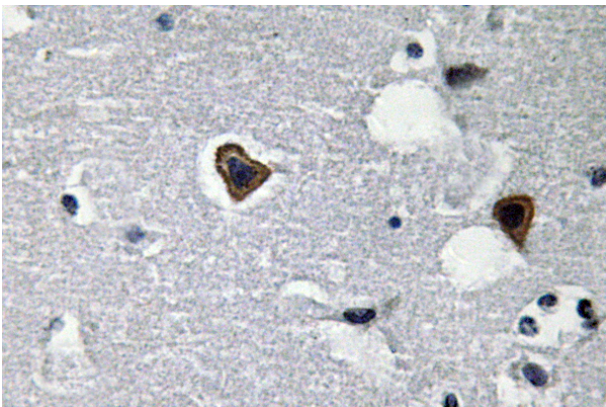
Usage suggestions

This product can be used in immunological reaction related experiments. For more information, please consult technical personnel.

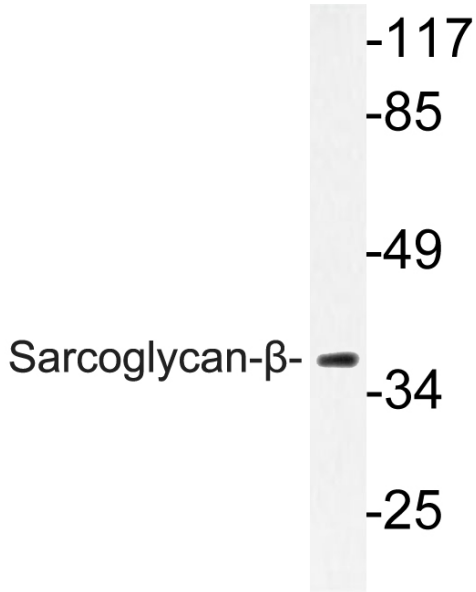
Products Images



Western Blot analysis of various cells using Sarcoglycan- β Polyclonal Antibody



Immunohistochemistry analysis of Sarcoglycan- β antibody in paraffin-embedded human brain tissue.



Western blot analysis of lysate from A549 cells, using Sarcoglycan- β antibody.