



S-100A5 Polyclonal Antibody

Catalog No	BYab-03181
Isotype	IgG
Reactivity	Human;Mouse;Rat
Applications	WB;ELISA
Gene Name	S100A5
Protein Name	Protein S100-A5
Immunogen	The antiserum was produced against synthesized peptide derived from human S100A5. AA range:34-83
Specificity	S-100A5 Polyclonal Antibody detects endogenous levels of S-100A5 protein.
Formulation	Liquid in PBS containing 50% glycerol, 0.5% BSA and 0.02% sodium azide.
Source	Polyclonal, Rabbit,IgG
Purification	The antibody was affinity-purified from rabbit antiserum by affinity-chromatography using epitope-specific immunogen.
Dilution	Western Blot: 1/500 - 1/2000. ELISA: 1/20000. Not yet tested in other applications.
Concentration	1 mg/ml
Purity	≥90%
Storage Stability	-20°C/1 year
Synonyms	S100A5; S100D; Protein S100-A5; Protein S-100D; S100 calcium-binding protein A5
Observed Band	32kD
Cell Pathway	nucleus,neuronal cell body,
Tissue Specificity	Brain,Kidney,
Function	similarity:Belongs to the S-100 family.,similarity:Contains 2 EF-hand domains.,
Background	S100 calcium binding protein A5(S100A5) Homo sapiens The protein encoded by this gene is a member of the S100 family of proteins containing 2 EF-hand calcium-binding motifs. S100 proteins are localized in the cytoplasm and/or nucleus of a wide range of cells, and involved in the regulation of a number of cellular processes such as cell cycle progression and differentiation. S100 genes include at least 13 members which are located as a cluster on chromosome 1q21. This protein has a Ca ²⁺ affinity 20- to 100-fold higher than the other S100 proteins studied under identical conditions. This protein also binds Zn ²⁺ and

Nanjing BYabscience technology Co.,Ltd



Cu²⁺, and Cu²⁺ strongly which impairs the binding of Ca²⁺. This protein is expressed in very restricted regions of the adult brain. [provided by RefSeq, Jul 2008],

matters needing attention

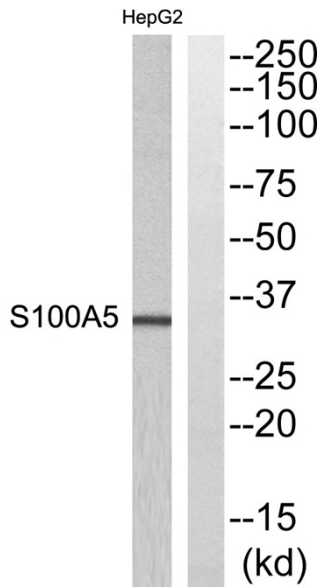
Avoid repeated freezing and thawing!

Usage suggestions

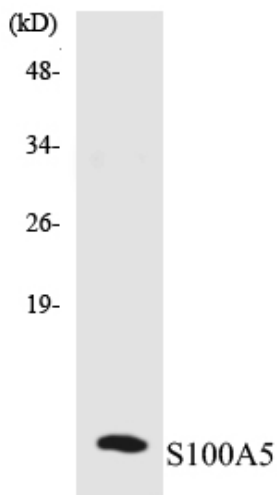
This product can be used in immunological reaction related experiments. For more information, please consult technical personnel.



Products Images



Western blot analysis of S100A5 Antibody. The lane on the right is blocked with the S100A5 peptide.



Western blot analysis of the lysates from K562 cells using S100A5 antibody.