



S-100A3 Polyclonal Antibody

| | |
|---------------------------|--|
| Catalog No | BYab-03180 |
| Isotype | IgG |
| Reactivity | Human;Mouse;Rat |
| Applications | WB;IHC;IF;ELISA |
| Gene Name | S100A3 |
| Protein Name | Protein S100-A3 |
| Immunogen | The antiserum was produced against synthesized peptide derived from human S100A3. AA range:26-75 |
| Specificity | S-100A3 Polyclonal Antibody detects endogenous levels of S-100A3 protein. |
| Formulation | Liquid in PBS containing 50% glycerol, 0.5% BSA and 0.02% sodium azide. |
| Source | Polyclonal, Rabbit,IgG |
| Purification | The antibody was affinity-purified from rabbit antiserum by affinity-chromatography using epitope-specific immunogen. |
| Dilution | IHC: 1/100 - 1/300. ELISA: 1/40000.. IF 1:50-200 |
| Concentration | 1 mg/ml |
| Purity | ≥90% |
| Storage Stability | -20°C/1 year |
| Synonyms | S100A3; S100E; Protein S100-A3; Protein S-100E; S100 calcium-binding protein A3 |
| Observed Band | 22kD |
| Cell Pathway | Cytoplasm . |
| Tissue Specificity | Skin specific, specifically expressed at the inner endocuticle of hair fibers. |
| Function | function: Binds both calcium and zinc. Probably binds 2 zinc ions per molecule. May be involved in calcium-dependent cuticle cell differentiation and hair shaft formation., similarity: Belongs to the S-100 family., similarity: Contains 2 EF-hand domains., subunit: Homodimer., tissue specificity: Skin specific., |
| Background | S100 calcium binding protein A3(S100A3) Homo sapiens The protein encoded by this gene is a member of the S100 family of proteins containing 2 EF-hand calcium-binding motifs. S100 proteins are localized in the cytoplasm and/or nucleus of a wide range of cells, and involved in the regulation of a number of cellular processes such as cell cycle progression and differentiation. S100 genes include at least 13 members which are located as a cluster on chromosome |

Nanjing BYabscience technology Co.,Ltd



1q21. This protein has the highest content of cysteines of all S100 proteins, has a high affinity for Zinc, and is highly expressed in human hair cuticle. The precise function of this protein is unknown. [provided by RefSeq, Jul 2008],

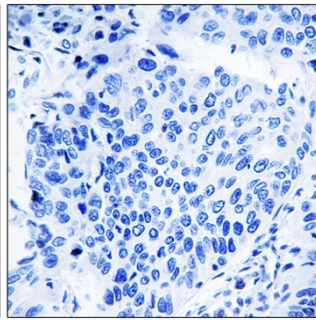
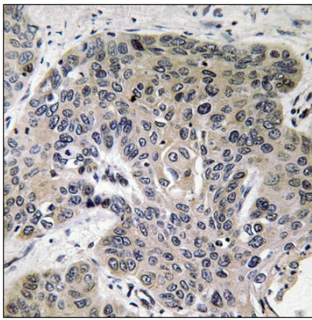
matters needing attention

Avoid repeated freezing and thawing!

Usage suggestions

This product can be used in immunological reaction related experiments. For more information, please consult technical personnel.

Products Images



Immunohistochemistry analysis of paraffin-embedded human lung carcinoma tissue, using S100A3 Antibody. The picture on the right is blocked with the synthesized peptide.