



# PRPH Polyclonal Antibody

<b>Catalog No</b>	BYab-03174
<b>Isotype</b>	IgG
<b>Reactivity</b>	Human;Rat
<b>Applications</b>	WB;IHC;IF;ELISA
<b>Gene Name</b>	PRPH
<b>Protein Name</b>	Peripherin
<b>Immunogen</b>	The antiserum was produced against synthesized peptide derived from human Peripherin. AA range:421-470
<b>Specificity</b>	PRPH Polyclonal Antibody detects endogenous levels of PRPH protein.
<b>Formulation</b>	Liquid in PBS containing 50% glycerol, 0.5% BSA and 0.02% sodium azide.
<b>Source</b>	Polyclonal, Rabbit,IgG
<b>Purification</b>	The antibody was affinity-purified from rabbit antiserum by affinity-chromatography using epitope-specific immunogen.
<b>Dilution</b>	WB: 1/500 - 1/2000. IHC: 1/100 - 1/300. ELISA: 1/20000.. IF 1:50-200
<b>Concentration</b>	1 mg/ml
<b>Purity</b>	≥90%
<b>Storage Stability</b>	-20°C/1 year
<b>Synonyms</b>	PRPH; NEF4; PRPH1; Peripherin; Neurofilament 4
<b>Observed Band</b>	55kD
<b>Cell Pathway</b>	Cytoplasm, cytoskeleton . Cell projection, axon . Perikaryon .
<b>Tissue Specificity</b>	Expressed in the neurons of the outer hair cells in the organ of Corti and to a lesser extent in type I spiral ganglion cells.
<b>Function</b>	function:Class-III neuronal intermediate filament protein.,online information:Peripherin entry,similarity:Belongs to the intermediate filament family.,
<b>Background</b>	This gene encodes a cytoskeletal protein found in neurons of the peripheral nervous system. The encoded protein is a type III intermediate filament protein with homology to other cytoskeletal proteins such as desmin, and is a different protein that the peripherin found in photoreceptors. Mutations in this gene have been associated with susceptibility to amyotrophic lateral sclerosis. [provided by RefSeq, Jul 2008],

Nanjing BYabscience technology Co.,Ltd



---

**matters needing attention**

Avoid repeated freezing and thawing!

---

**Usage suggestions**

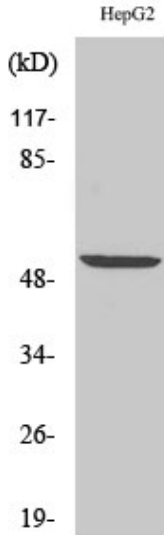
This product can be used in immunological reaction related experiments. For more information, please consult technical personnel.

---

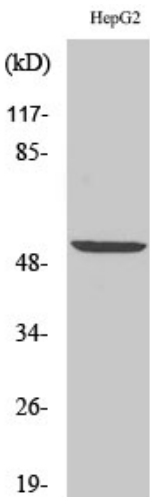
---



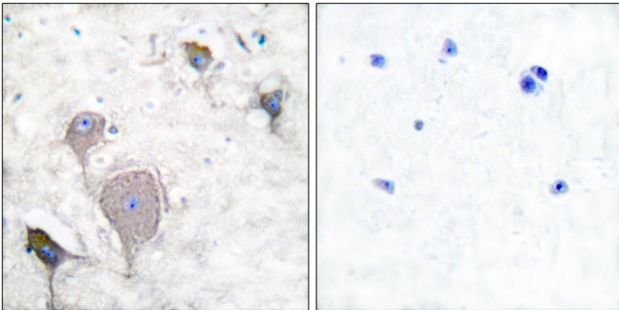
## Products Images



Western Blot analysis of various cells using PRPH Polyclonal Antibody diluted at 1:1000



Western Blot analysis of HepG2 cells using PRPH Polyclonal Antibody diluted at 1:1000



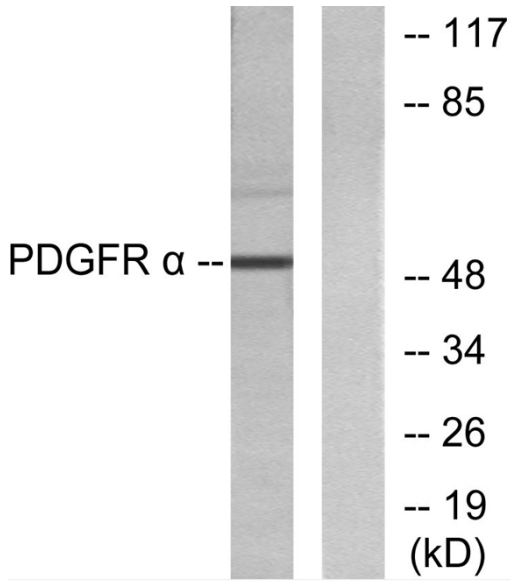
Immunohistochemistry analysis of paraffin-embedded human brain tissue, using Peripherin Antibody. The picture on the right is blocked with the synthesized peptide.

Nanjing BYabscience technology Co.,Ltd

网址: [www.njbybio.com](http://www.njbybio.com)

官方热线: 025-5229-8998

监督电话: 15950492658



Western blot analysis of lysates from HepG2 cells, using Peripherin Antibody. The lane on the right is blocked with the synthesized peptide.