



POTE-8 Polyclonal Antibody

Catalog No	BYab-03173
Isotype	IgG
Reactivity	Human;Rat;Mouse;
Applications	IHC;IF;ELISA
Gene Name	POTEA
Protein Name	POTE ankyrin domain family member A
Immunogen	The antiserum was produced against synthesized peptide derived from human POTEA. AA range:375-424
Specificity	POTE-8 Polyclonal Antibody detects endogenous levels of POTE-8 protein.
Formulation	Liquid in PBS containing 50% glycerol, 0.5% BSA and 0.02% sodium azide.
Source	Polyclonal, Rabbit,IgG
Purification	The antibody was affinity-purified from rabbit antiserum by affinity-chromatography using epitope-specific immunogen.
Dilution	IHC: 1/100 - 1/300. ELISA: 1/5000.. IF 1:50-200
Concentration	1 mg/ml
Purity	≥90%
Storage Stability	-20°C/1 year
Synonyms	POTEA; A26A1; POTE8; POTE ankyrin domain family member A; ANKRD26-like family A member 1; Prostate; ovary, testis-expressed protein on chromosome 8; POTE-8
Observed Band	
Cell Pathway	
Tissue Specificity	Prostate,
Function	similarity:Belongs to the POTE family.,similarity:Contains 5 ANK repeats.,
Background	similarity:Belongs to the POTE family.,similarity:Contains 5 ANK repeats.,
matters needing attention	Avoid repeated freezing and thawing!

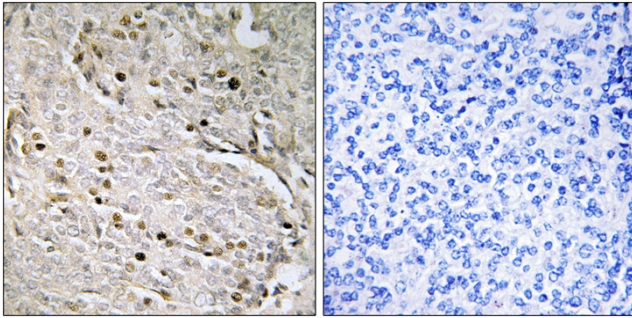
Nanjing BYabscience technology Co.,Ltd



Usage suggestions

This product can be used in immunological reaction related experiments. For more information, please consult technical personnel.

Products Images



Immunohistochemistry analysis of paraffin-embedded human prostate carcinoma, using POTE8 Antibody. The picture on the right is blocked with the synthesized peptide.