



POTE14/22 Polyclonal Antibody

Catalog No	BYab-03170
Isotype	IgG
Reactivity	Human;Rat;Mouse;
Applications	WB;IHC;IF;ELISA
Gene Name	POTEG
Protein Name	POTE ankyrin domain family member G
Immunogen	The antiserum was produced against synthesized peptide derived from human POTEG. AA range:401-450
Specificity	POTE14/22 Polyclonal Antibody detects endogenous levels of POTE14/22 protein.
Formulation	Liquid in PBS containing 50% glycerol, 0.5% BSA and 0.02% sodium azide.
Source	Polyclonal, Rabbit,IgG
Purification	The antibody was affinity-purified from rabbit antiserum by affinity-chromatography using epitope-specific immunogen.
Dilution	WB: 1/500 - 1/2000. IHC: 1/100 - 1/300. ELISA: 1/40000.. IF 1:50-200
Concentration	1 mg/ml
Purity	≥90%
Storage Stability	-20°C/1 year
Synonyms	POTEG; A26C2; POTE14; POTE ankyrin domain family member G; ANKRD26-like family C member 2; Prostate; ovary, testis-expressed protein on chromosome 14; POTE-14; POTEH; A26C3; ACTBL1; POTE22; POTE ankyrin domain family member H; ANKRD26-like
Observed Band	67kD
Cell Pathway	
Tissue Specificity	Prostate,
Function	similarity:Belongs to the POTE family.,similarity:Contains 5 ANK repeats.,
Background	similarity:Belongs to the POTE family.,similarity:Contains 5 ANK repeats.,

Nanjing BYabscience technology Co.,Ltd



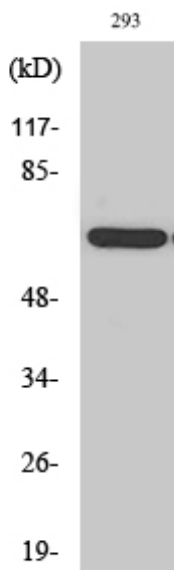
matters needing attention

Avoid repeated freezing and thawing!

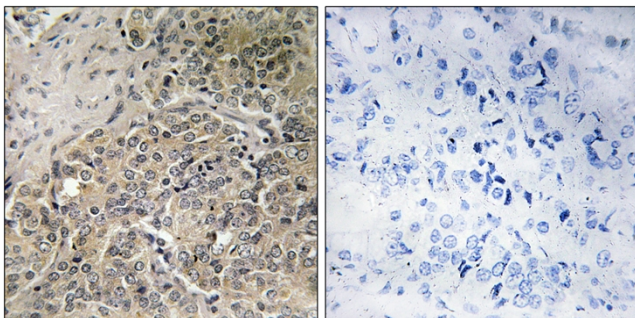
Usage suggestions

This product can be used in immunological reaction related experiments. For more information, please consult technical personnel.

Products Images



Western Blot analysis of various cells using POTE14/22 Polyclonal Antibody



Immunohistochemistry analysis of paraffin-embedded human prostate carcinoma, using A26C2/3 Antibody. The picture on the right is blocked with the synthesized peptide.

Nanjing BYabscience technology Co.,Ltd