



Myosin XVI Polyclonal Antibody

Catalog No	BYab-03167
Isotype	IgG
Reactivity	Human;Rat;Mouse;
Applications	WB;ELISA;IHC
Gene Name	MYO16
Protein Name	Unconventional myosin-XVI
Immunogen	Synthesized peptide derived from Myosin XVI . at AA range: 1050-1130
Specificity	Myosin XVI Polyclonal Antibody detects endogenous levels of Myosin XVI protein.
Formulation	Liquid in PBS containing 50% glycerol, 0.5% BSA and 0.02% sodium azide.
Source	Polyclonal, Rabbit,IgG
Purification	The antibody was affinity-purified from rabbit antiserum by affinity-chromatography using epitope-specific immunogen.
Dilution	WB 1:500-2000;IHC-p 1:50-300; ELISA 2000-20000
Concentration	1 mg/ml
Purity	≥90%
Storage Stability	-20°C/1 year
Synonyms	MYO16; KIAA0865; MYO16B; NYAP3; Unconventional myosin-XVI; Neuronal tyrosine-phosphorylated phosphoinositide-3-kinase adapter 3; Unconventional myosin-16
Observed Band	200kD
Cell Pathway	Cytoplasm . Found in puncta in soma and processes of astrocytes and dissociated cerebellar cells with the morphology of migrating granule cells. .
Tissue Specificity	Amygdala,Brain,
Function	function:Myosins are actin-based motor molecules with ATPase activity. Unconventional myosins serve in intracellular movements. Their highly divergent tails are presumed to bind to membranous compartments, which would be moved relative to actin filaments. May be involved in targeting of the catalytic subunit of protein phosphatase 1 during brain development.,similarity:Contains 1 IQ domain.,similarity:Contains 2 myosin head-like domains.,similarity:Contains 7 ANK repeats.,subcellular location:Found in puncta in soma and processes of astrocytes and dissociated cerebellar cells with the morphology of migrating granule cells.,subunit:Binds PPP1CA and/or PPP1CC. Binds F-actin in an

Nanjing BYabscience technology Co.,Ltd



ATP-sensitive manner.,

Background

function:Myosins are actin-based motor molecules with ATPase activity. Unconventional myosins serve in intracellular movements. Their highly divergent tails are presumed to bind to membranous compartments, which would be moved relative to actin filaments. May be involved in targeting of the catalytic subunit of protein phosphatase 1 during brain development.,similarity:Contains 1 IQ domain.,similarity:Contains 2 myosin head-like domains.,similarity:Contains 7 ANK repeats.,subcellular location:Found in puncta in soma and processes of astrocytes and dissociated cerebellar cells with the morphology of migrating granule cells.,subunit:Binds PPP1CA and/or PPP1CC. Binds F-actin in an ATP-sensitive manner.,

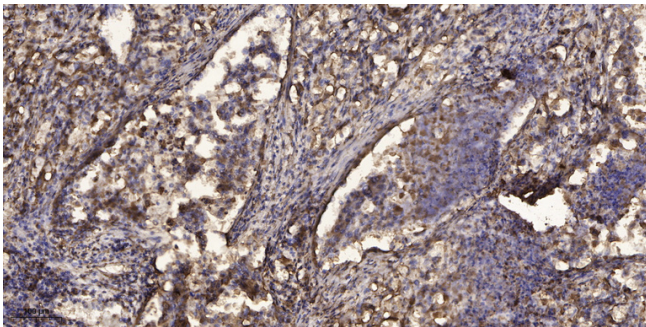
matters needing attention

Avoid repeated freezing and thawing!

Usage suggestions

This product can be used in immunological reaction related experiments. For more information, please consult technical personnel.

Products Images



Immunohistochemical analysis of paraffin-embedded human Squamous cell carcinoma of lung. 1, Antibody was diluted at 1:200(4° overnight). 2, Tris-EDTA,pH9.0 was used for antigen retrieval. 3,Secondary antibody was diluted at 1:200(room temperature, 45min).