



MYLIP Polyclonal Antibody

Catalog No	BYab-03161
Isotype	IgG
Reactivity	Human;Mouse;Rat
Applications	WB;IHC;IF;ELISA
Gene Name	MYLIP
Protein Name	E3 ubiquitin-protein ligase MYLIP
Immunogen	The antiserum was produced against synthesized peptide derived from human MYLIP. AA range:161-210
Specificity	MYLIP Polyclonal Antibody detects endogenous levels of MYLIP protein.
Formulation	Liquid in PBS containing 50% glycerol, 0.5% BSA and 0.02% sodium azide.
Source	Polyclonal, Rabbit,IgG
Purification	The antibody was affinity-purified from rabbit antiserum by affinity-chromatography using epitope-specific immunogen.
Dilution	WB: 1/500 - 1/2000. IHC: 1/100 - 1/300. ELISA: 1/20000.. IF 1:50-200
Concentration	1 mg/ml
Purity	≥90%
Storage Stability	-20°C/1 year
Synonyms	MYLIP; BZF1; IDOL; BM-023; PP5242; E3 ubiquitin-protein ligase MYLIP; Inducible degrader of the LDL-receptor; Idol; Myosin regulatory light chain interacting protein; MIR
Observed Band	50kD
Cell Pathway	Cytoplasm . Cell membrane ; Peripheral membrane protein .
Tissue Specificity	Ubiquitously expressed.
Function	developmental stage:Expressed in fetal tissues and higher levels were detected in placenta and fetal lung.,domain:The RING domain mediates ubiquitination and the neurite outgrowth inhibitory activity.,function:E3 ubiquitin-protein ligase that mediates ubiquitination and subsequent proteasomal degradation of myosin regulatory light chain (MRLC). Stable or transient overexpression of MIR induces proteasomal degradation of MRLC inhibiting neurite outgrowth in presence of NGF. MIR counteracts the stabilization of MRLC by MIR-interacting saposin-like protein (MSAP/TMEM4) and reduces MSAP-stimulated neurite outgrowth.,pathway:Protein modification; protein

Nanjing BYabscience technology Co.,Ltd



ubiquitination.,PTM:Autoubiquitinated.,similarity:Contains 1 FERM domain.,similarity:Contains 1 RING-type zinc finger.,subunit:Interacts with myosin regulatory light chain (MRLC) and TMEM4.,tissue specificity:Ubiquitously expressed.,

Background

The ERM protein family members ezrin, radixin, and moesin are cytoskeletal effector proteins linking actin to membrane-bound proteins at the cell surface. Myosin regulatory light chain interacting protein (MYLIP) is a novel ERM-like protein that interacts with myosin regulatory light chain and inhibits neurite outgrowth. [provided by RefSeq, Jul 2008],

matters needing attention

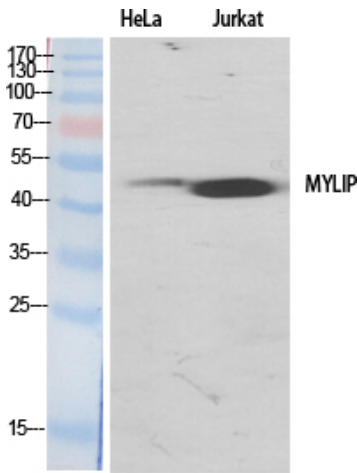
Avoid repeated freezing and thawing!

Usage suggestions

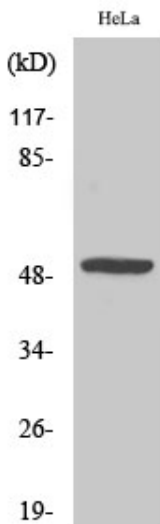
This product can be used in immunological reaction related experiments. For more information, please consult technical personnel.



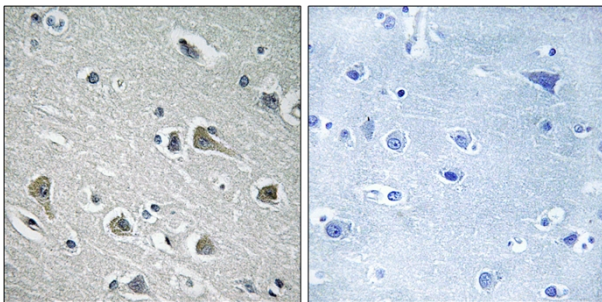
Products Images



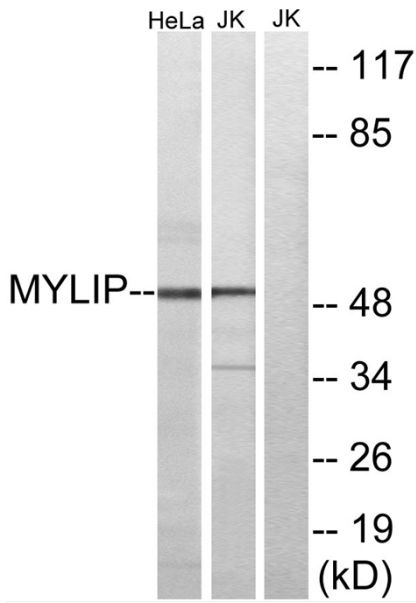
Western Blot analysis of various cells using MYLIP Polyclonal Antibody



Western Blot analysis of Jurkat cells using MYLIP Polyclonal Antibody



Immunohistochemistry analysis of paraffin-embedded human brain tissue, using MYLIP Antibody. The picture on the right is blocked with the synthesized peptide.



Western blot analysis of lysates from HeLa and Jurkat cells, using MYLIP Antibody. The lane on the right is blocked with the synthesized peptide.