



MYBPC1 Polyclonal Antibody

Catalog No	BYab-03154
Isotype	IgG
Reactivity	Human;Mouse;Rat
Applications	WB;ELISA;IHC
Gene Name	MYBPC1
Protein Name	Myosin-binding protein C slow-type
Immunogen	The antiserum was produced against synthesized peptide derived from human MYBPC1. AA range:218-267
Specificity	MYBPC1 Polyclonal Antibody detects endogenous levels of MYBPC1 protein.
Formulation	Liquid in PBS containing 50% glycerol, 0.5% BSA and 0.02% sodium azide.
Source	Polyclonal, Rabbit,IgG
Purification	The antibody was affinity-purified from rabbit antiserum by affinity-chromatography using epitope-specific immunogen.
Dilution	WB 1:500-2000;IHC-p 1:50-300; ELISA 2000-20000
Concentration	1 mg/ml
Purity	≥90%
Storage Stability	-20°C/1 year
Synonyms	MYBPC1; MYBPCS; Myosin-binding protein C; slow-type; Slow MyBP-C; C-protein, skeletal muscle slow isoform
Observed Band	120kD
Cell Pathway	cytosol,myofibril,myosin filament,
Tissue Specificity	Brain,Fetal skeletal muscle,Hippocampus,Liver,Muscle pool- 2 tissue
Function	function:Thick filament-associated protein located in the crossbridge region of vertebrate striated muscle a bands. In vitro it binds MHC, F-actin and native thin filaments, and modifies the activity of actin-activated myosin ATPase. It may modulate muscle contraction or may play a more structural role.,similarity:Belongs to the immunoglobulin superfamily. MyBP family.,similarity:Contains 3 fibronectin type-III domains.,similarity:Contains 7 Ig-like C2-type (immunoglobulin-like) domains.,
Background	This gene encodes a member of the myosin-binding protein C family. Myosin-binding protein C family members are myosin-associated proteins found in the cross-bridge-bearing zone (C region) of A bands in striated muscle. The

Nanjing BYabscience technology Co.,Ltd



encoded protein is the slow skeletal muscle isoform of myosin-binding protein C and plays an important role in muscle contraction by recruiting muscle-type creatine kinase to myosin filaments. Mutations in this gene are associated with distal arthrogyrosis type I. Alternatively spliced transcript variants encoding multiple isoforms have been observed for this gene. [provided by RefSeq, Dec 2011],

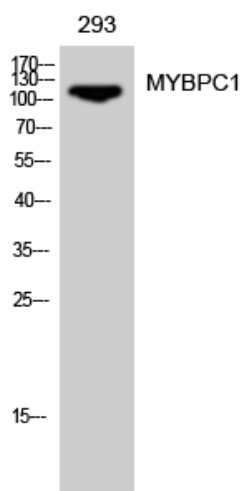
matters needing attention

Avoid repeated freezing and thawing!

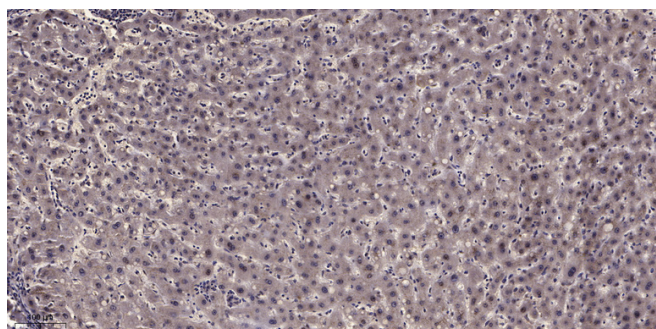
Usage suggestions

This product can be used in immunological reaction related experiments. For more information, please consult technical personnel.

Products Images



Western Blot analysis of 293 cells using MYBPC1 Polyclonal Antibody diluted at 1:500



Immunohistochemical analysis of paraffin-embedded human liver cancer. 1, Antibody was diluted at 1:200(4° overnight). 2, Tris-EDTA,pH9.0 was used for antigen retrieval. 3,Secondary antibody was diluted at 1:200(room temperature, 45min).