



Keratin 37/38 Polyclonal Antibody

Catalog No	BYab-03142
Isotype	IgG
Reactivity	Human;Rat;Mouse;
Applications	WB;ELISA;IHC
Gene Name	KRT37/KRT38
Protein Name	Keratin type I cuticular Ha7/Keratin type I cuticular Ha8
Immunogen	The antiserum was produced against synthesized peptide derived from human KRT37/38. AA range:201-250
Specificity	Keratin 37/38 Polyclonal Antibody detects endogenous levels of Keratin 37/38 protein.
Formulation	Liquid in PBS containing 50% glycerol, 0.5% BSA and 0.02% sodium azide.
Source	Polyclonal, Rabbit,IgG
Purification	The antibody was affinity-purified from rabbit antiserum by affinity-chromatography using epitope-specific immunogen.
Dilution	WB 1:500-2000;IHC-p 1:50-300; ELISA 2000-20000
Concentration	1 mg/ml
Purity	≥90%
Storage Stability	-20°C/1 year
Synonyms	KRT37; HHA7; HKA7; KRTHA7; Keratin; type I cuticular Ha7; Hair keratin, type I Ha7; Keratin-37; K37; KRT38; HHA8; HKA8; KRTHA8; Keratin, type I cuticular Ha8; Hair keratin, type I Ha8; Keratin-38; K38
Observed Band	50kD
Cell Pathway	intermediate filament,extracellular exosome,
Tissue Specificity	Scalp,
Function	miscellaneous:There are two types of hair/microfibrillar keratin, I (acidic) and II (neutral to basic).,similarity:Belongs to the intermediate filament family.,
Background	The protein encoded by this gene is a member of the keratin gene family. As a type I hair keratin, it is an acidic protein which heterodimerizes with type II keratins to form hair and nails. The type I hair keratins are clustered in a region of chromosome 17q12-q21 and have the same direction of transcription. [provided by RefSeq, Jul 2008],

Nanjing BYabscience technology Co.,Ltd



matters needing attention

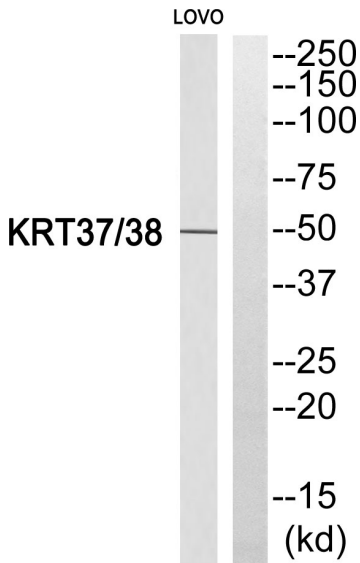
Avoid repeated freezing and thawing!

Usage suggestions

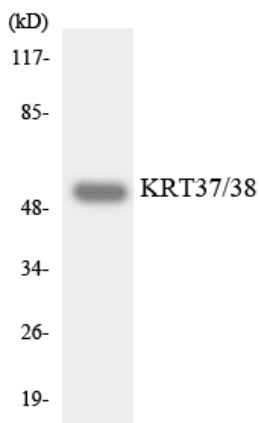
This product can be used in immunological reaction related experiments. For more information, please consult technical personnel.



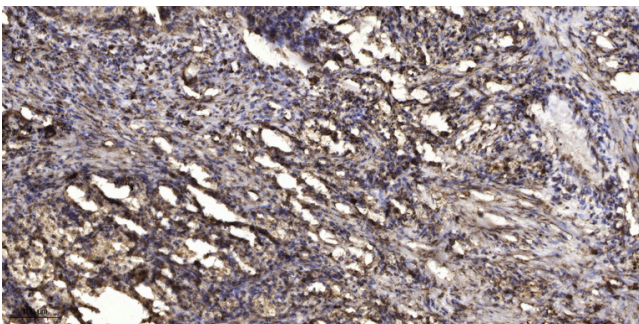
Products Images



Western blot analysis of KRT37/38 Antibody. The lane on the right is blocked with the KRT37/38 peptide.



Western blot analysis of the lysates from HepG2 cells using KRT37/38 antibody.



Immunohistochemical analysis of paraffin-embedded human Squamous cell carcinoma of lung. 1, Antibody was diluted at 1:200(4° overnight). 2, Tris-EDTA,pH9.0 was used for antigen retrieval. 3,Secondary antibody was diluted at 1:200(room temperature, 45min).