



# GFAP Polyclonal Antibody

<b>Catalog No</b>	BYab-03140
<b>Isotype</b>	IgG
<b>Reactivity</b>	Human;Rat;Mouse;
<b>Applications</b>	WB;IHC;IF;ELISA
<b>Gene Name</b>	GFAP
<b>Protein Name</b>	Glial fibrillary acidic protein
<b>Immunogen</b>	The antiserum was produced against synthesized peptide derived from human GFAP. AA range:11-60
<b>Specificity</b>	GFAP Polyclonal Antibody detects endogenous levels of GFAP protein.
<b>Formulation</b>	Liquid in PBS containing 50% glycerol, 0.5% BSA and 0.02% sodium azide.
<b>Source</b>	Polyclonal, Rabbit,IgG
<b>Purification</b>	The antibody was affinity-purified from rabbit antiserum by affinity-chromatography using epitope-specific immunogen.
<b>Dilution</b>	Western Blot: 1/500 - 1/2000. Immunohistochemistry: 1/100 - 1/300. Immunofluorescence: 1/200 - 1/1000. ELISA: 1/5000. Not yet tested in other applications.
<b>Concentration</b>	1 mg/ml
<b>Purity</b>	≥90%
<b>Storage Stability</b>	-20°C/1 year
<b>Synonyms</b>	GFAP; Glial fibrillary acidic protein; GFAP
<b>Observed Band</b>	50kD
<b>Cell Pathway</b>	Cytoplasm . Associated with intermediate filaments. .
<b>Tissue Specificity</b>	Expressed in cells lacking fibronectin.
<b>Function</b>	alternative products:Isoforms differ in the C-terminal region which is encoded by alternative exons,disease:Defects in GFAP are a cause of Alexander disease (ALEXD) [MIM:203450]. Alexander disease is a rare disorder of the central nervous system. It is a progressive leukoencephalopathy whose hallmark is the widespread accumulation of Rosenthal fibers which are cytoplasmic inclusions in astrocytes. The most common form affects infants and young children, and is characterized by progressive failure of central myelination, usually leading to death usually within the first decade. Infants with Alexander disease develop a leukoencephalopathy with macrocephaly, seizures, and psychomotor retardation. Patients with juvenile or adult forms typically experience ataxia, bulbar signs and

Nanjing BYabscience technology Co.,Ltd



spasticity, and a more slowly progressive course.,function:GFAP, a class-III intermediate filament, is a cell-spe

### Background

This gene encodes one of the major intermediate filament proteins of mature astrocytes. It is used as a marker to distinguish astrocytes from other glial cells during development. Mutations in this gene cause Alexander disease, a rare disorder of astrocytes in the central nervous system. Alternative splicing results in multiple transcript variants encoding distinct isoforms. [provided by RefSeq, Oct 2008],

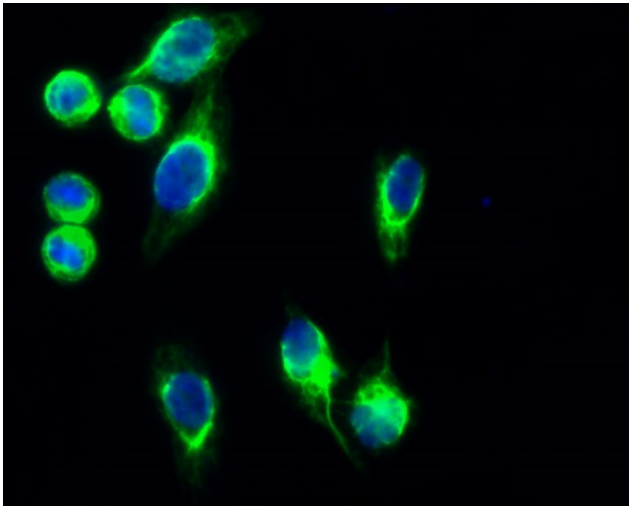
### matters needing attention

Avoid repeated freezing and thawing!

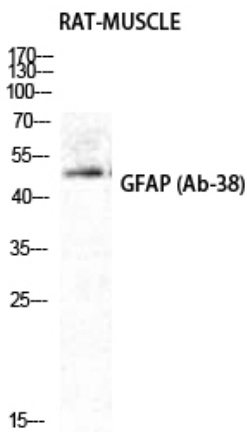
### Usage suggestions

This product can be used in immunological reaction related experiments. For more information, please consult technical personnel.

## Products Images

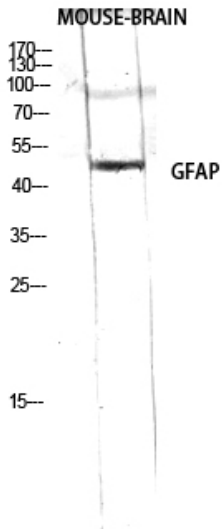


Immunofluorescence analysis of HeLa cell. 1,GFAP Polyclonal Antibody(green) was diluted at 1:200(4° overnight). 2, Goat Anti Rabbit Alexa Fluor 488 Catalog:RS3211 was diluted at 1:1000(room temperature, 50min). 3 DAPI(blue) 10min.

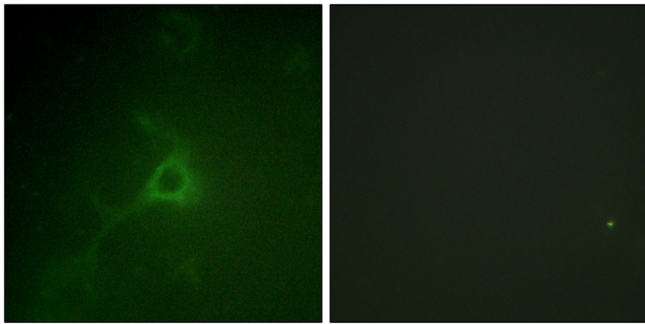


Western Blot analysis of RAT-MUSCLE cells using GFAP Polyclonal Antibody diluted at 1:2000

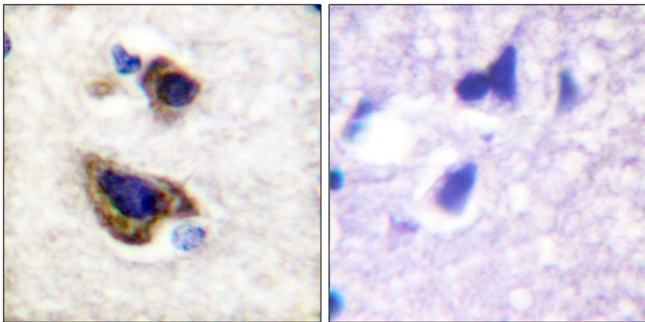
Nanjing BYabscience technology Co.,Ltd



Western Blot analysis of RAW using GFAP Polyclonal Antibody diluted at 1:2000



Immunofluorescence analysis of COS7 cells, using GFAP Antibody. The picture on the right is blocked with the synthesized peptide.



Immunohistochemistry analysis of paraffin-embedded human brain tissue, using GFAP Antibody. The picture on the right is blocked with the synthesized peptide.