



# GCP5 Polyclonal Antibody

<b>Catalog No</b>	BYab-03138
<b>Isotype</b>	IgG
<b>Reactivity</b>	Human;Mouse;Rat
<b>Applications</b>	WB;IHC;IF;ELISA
<b>Gene Name</b>	TUBGCP5
<b>Protein Name</b>	Gamma-tubulin complex component 5
<b>Immunogen</b>	The antiserum was produced against synthesized peptide derived from human TUBGCP5. AA range:741-790
<b>Specificity</b>	GCP5 Polyclonal Antibody detects endogenous levels of GCP5 protein.
<b>Formulation</b>	Liquid in PBS containing 50% glycerol, 0.5% BSA and 0.02% sodium azide.
<b>Source</b>	Polyclonal, Rabbit,IgG
<b>Purification</b>	The antibody was affinity-purified from rabbit antiserum by affinity-chromatography using epitope-specific immunogen.
<b>Dilution</b>	WB: 1/500 - 1/2000. IHC: 1/100 - 1/300. ELISA: 1/20000.. IF 1:50-200
<b>Concentration</b>	1 mg/ml
<b>Purity</b>	≥90%
<b>Storage Stability</b>	-20°C/1 year
<b>Synonyms</b>	TUBGCP5; GCP5; KIAA1899; Gamma-tubulin complex component 5; GCP-5
<b>Observed Band</b>	118kD
<b>Cell Pathway</b>	Cytoplasm, cytoskeleton, microtubule organizing center, centrosome .
<b>Tissue Specificity</b>	Widely expressed, with highest levels in heart and skeletal muscle and moderate levels in brain.
<b>Function</b>	function:Gamma-tubulin complex is necessary for microtubule nucleation at the centrosome.,similarity:Belongs to the GCP family.,subunit:Gamma-tubulin complex is composed of gamma-tubulin, GCP2, GCP3, GCP4, GCP5 and GCP6.,tissue specificity:Widely expressed, with highest levels in heart and skeletal muscle and moderate levels in brain.,
<b>Background</b>	function:Gamma-tubulin complex is necessary for microtubule nucleation at the centrosome.,similarity:Belongs to the GCP family.,subunit:Gamma-tubulin complex is composed of gamma-tubulin, GCP2, GCP3, GCP4, GCP5 and GCP6.,tissue specificity:Widely expressed, with highest levels in heart and skeletal muscle and moderate levels in brain.,

Nanjing BYabscience technology Co.,Ltd



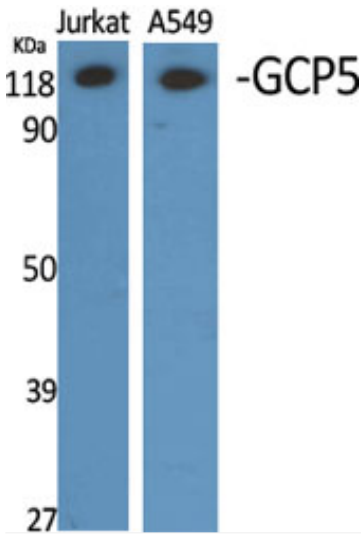
**matters needing attention**

Avoid repeated freezing and thawing!

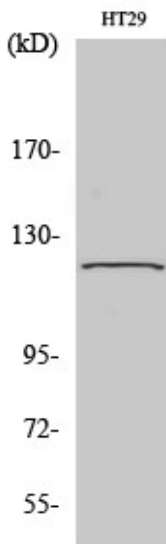
**Usage suggestions**

This product can be used in immunological reaction related experiments. For more information, please consult technical personnel.

## Products Images

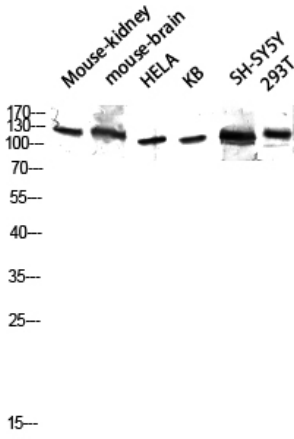


Western Blot analysis of various cells using GCP5 Polyclonal Antibody diluted at 1:2000

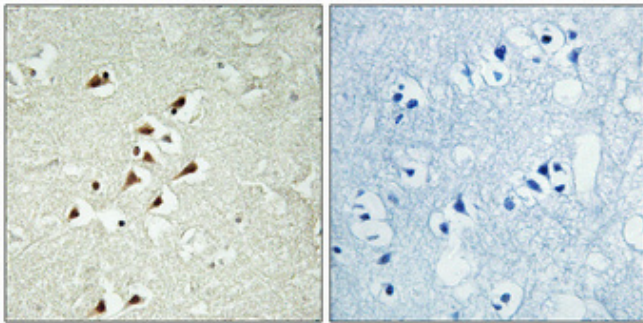


Western Blot analysis of 293 cells using GCP5 Polyclonal Antibody diluted at 1:2000

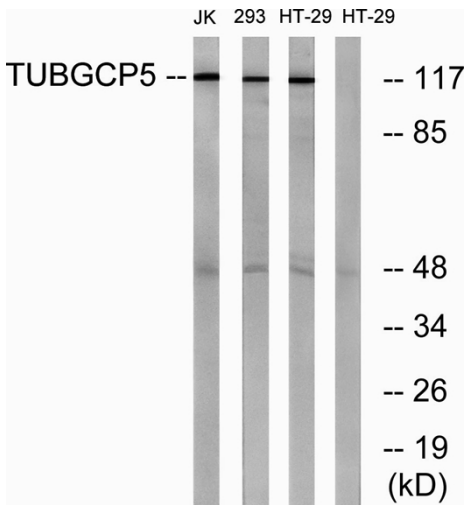
Nanjing BYabscience technology Co.,Ltd



Western blot analysis of Mouse-kidney mouse-brain HELA KB SH-SY5Y 293T lysis using GCP5 antibody. Antibody was diluted at 1:2000



Immunohistochemical analysis of paraffin-embedded Human brain. Antibody was diluted at 1:100(4° overnight). High-pressure and temperature Tris-EDTA, pH8.0 was used for antigen retrieval. Negative control (right) obtained from antibody was pre-absorbed by immunogen peptide.



Western blot analysis of lysates from HT-29, Jurkat, and 293 cells, using TUBGCP5 Antibody. The lane on the right is blocked with the synthesized peptide.