



# Dynein LC 4 Polyclonal Antibody

|                           |   |
|---------------------------|---|
| <b>Catalog No</b>         | BYab-03132  |
| <b>Isotype</b>            | IgG   |
| <b>Reactivity</b>         | Human;Mouse   |
| <b>Applications</b>       | IHC;IF;ELISA  |
| <b>Gene Name</b>          | DNAL4   |
| <b>Protein Name</b>       | Dynein light chain 4 axonemal   |
| <b>Immunogen</b>          | The antiserum was produced against synthesized peptide derived from human DNAL4. AA range:1-50  |
| <b>Specificity</b>        | Dynein LC 4 Polyclonal Antibody detects endogenous levels of Dynein LC 4 protein.   |
| <b>Formulation</b>        | Liquid in PBS containing 50% glycerol, 0.5% BSA and 0.02% sodium azide.   |
| <b>Source</b>             | Polyclonal, Rabbit,IgG  |
| <b>Purification</b>       | The antibody was affinity-purified from rabbit antiserum by affinity-chromatography using epitope-specific immunogen.   |
| <b>Dilution</b>           | IHC: 1/100 - 1/300. ELISA: 1/40000.. IF 1:50-200  |
| <b>Concentration</b>      | 1 mg/ml   |
| <b>Purity</b>             | ≥90%  |
| <b>Storage Stability</b>  | -20°C/1 year  |
| <b>Synonyms</b>           | DNAL4; Dynein light chain 4; axonemal   |
| <b>Observed Band</b>      |   |
| <b>Cell Pathway</b>       | Cytoplasm, cytoskeleton, cilium axoneme .   |
| <b>Tissue Specificity</b> | Lung,Skin,Testis,   |
| <b>Function</b>           | function:Force generating protein of respiratory cilia. Produces force towards the minus ends of microtubules. Dynein has ATPase activity.,similarity:Belongs to the dynein light chain family.,subunit:Consists of at least two heavy chains and a number of intermediate and light chains.,   |
| <b>Background</b>         | This gene encodes an axonemal dynein light chain which functions as a component of the outer dynein arms complex. This complex acts as the molecular motor that provides the force to move cilia in an ATP-dependent manner. The encoded protein is expressed in tissues with motile cilia or flagella and may be involved in the movement of sperm flagella. [provided by RefSeq, Dec 2014], |

Nanjing BYabscience technology Co.,Ltd



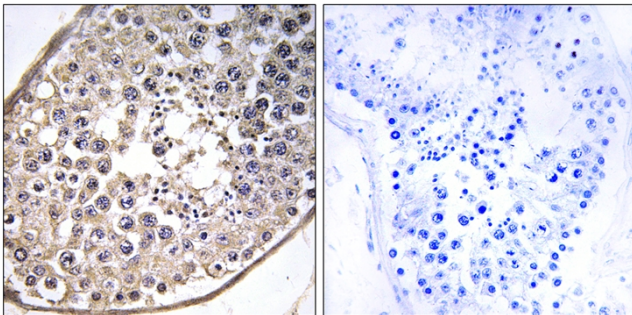
**matters needing attention**

Avoid repeated freezing and thawing!

**Usage suggestions**

This product can be used in immunological reaction related experiments. For more information, please consult technical personnel.

**Products Images**



Immunohistochemistry analysis of paraffin-embedded human testis tissue, using DNAL4 Antibody. The picture on the right is blocked with the synthesized peptide.