



Dynein LC 1 Polyclonal Antibody

Catalog No	BYab-03129
Isotype	IgG
Reactivity	Human;Mouse
Applications	WB;IHC;IF;ELISA
Gene Name	DNAL1
Protein Name	Dynein light chain 1 axonemal
Immunogen	The antiserum was produced against synthesized peptide derived from human DNAL1. AA range:121-170
Specificity	Dynein LC 1 Polyclonal Antibody detects endogenous levels of Dynein LC 1 protein.
Formulation	Liquid in PBS containing 50% glycerol, 0.5% BSA and 0.02% sodium azide.
Source	Polyclonal, Rabbit,IgG
Purification	The antibody was affinity-purified from rabbit antiserum by affinity-chromatography using epitope-specific immunogen.
Dilution	WB: 1/500 - 1/2000. IHC: 1/100 - 1/300. ELISA: 1/40000.. IF 1:50-200
Concentration	1 mg/ml
Purity	≥90%
Storage Stability	-20°C/1 year
Synonyms	DNAL1; C14orf168; Dynein light chain 1; axonemal
Observed Band	22kD
Cell Pathway	Cytoplasm, cytoskeleton, cilium axoneme .
Tissue Specificity	Expressed in tissues carrying motile cilia such as respiratory epithelia, ependyma and testis.
Function	similarity:Belongs to the dynein light chain LC1-type family.,similarity:Contains 4 LRR (leucine-rich) repeats.,subunit:Interacts with DNAH5.,tissue specificity:Expressed in tissues carrying motile cilia such as testis.,
Background	This gene encodes an axonemal dynein light chain which functions as a component of the outer dynein arms complex. This complex acts as the molecular motor that provides the force to move cilia in an ATP-dependent manner. The encoded protein is expressed in tissues with motile cilia or flagella and may be involved in the movement of sperm flagella. Alternate splicing results in multiple transcript variants.[provided by RefSeq, Jan 2011],

Nanjing BYabscience technology Co.,Ltd



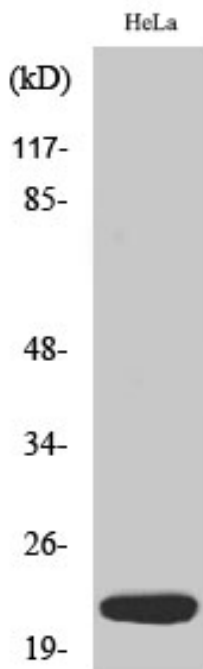
matters needing attention

Avoid repeated freezing and thawing!

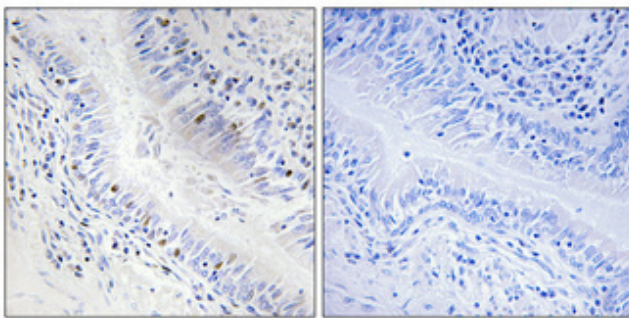
Usage suggestions

This product can be used in immunological reaction related experiments. For more information, please consult technical personnel.

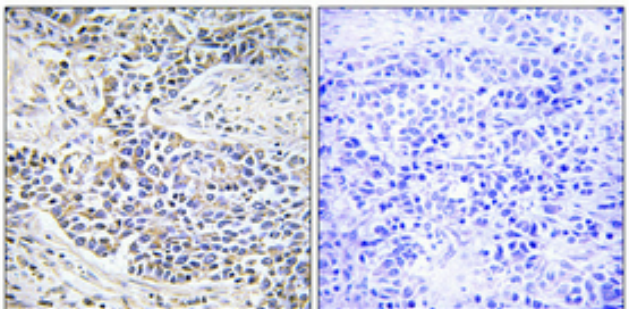
Products Images



Western Blot analysis of various cells using Dynein LC 1 Polyclonal Antibody diluted at 1:500

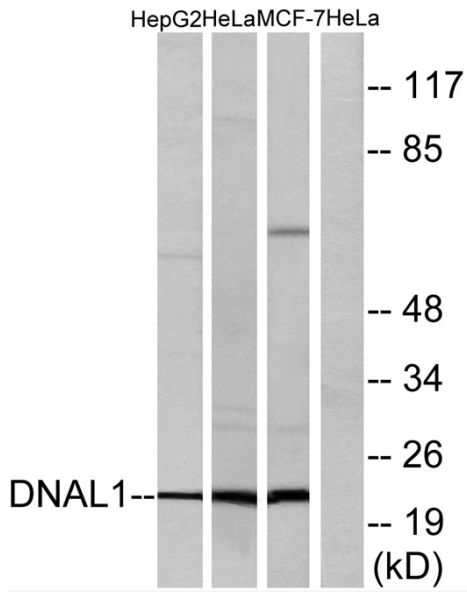


Immunohistochemical analysis of paraffin-embedded Human lung cancer. Antibody was diluted at 1:100(4° overnight). High-pressure and temperature Tris-EDTA,pH8.0 was used for antigen retrieval. Negative contrl (right) obtaned from antibody was pre-absorbed by immunogen peptide.



Immunohistochemical analysis of paraffin-embedded Human lung cancer. Antibody was diluted at 1:100(4° overnight). High-pressure and temperature Tris-EDTA,pH8.0 was used for antigen retrieval. Negative contrl (right) obtaned from antibody was pre-absorbed by immunogen peptide.

Nanjing BYabscience technology Co.,Ltd



Western blot analysis of lysates from HeLa, HepG2, and MCF-7 cells, using DNAL1 Antibody. The lane on the right is blocked with the synthesized peptide.