



# Desmin Polyclonal Antibody

<b>Catalog No</b>	BYab-03124
<b>Isotype</b>	IgG
<b>Reactivity</b>	Human;Mouse;Rat
<b>Applications</b>	WB;IHC;IF;ELISA
<b>Gene Name</b>	DES
<b>Protein Name</b>	Desmin
<b>Immunogen</b>	The antiserum was produced against synthesized peptide derived from human Desmin. AA range:421-470
<b>Specificity</b>	Desmin Polyclonal Antibody detects endogenous levels of Desmin protein.
<b>Formulation</b>	Liquid in PBS containing 50% glycerol, 0.5% BSA and 0.02% sodium azide.
<b>Source</b>	Polyclonal, Rabbit,IgG
<b>Purification</b>	The antibody was affinity-purified from rabbit antiserum by affinity-chromatography using epitope-specific immunogen.
<b>Dilution</b>	Western Blot: 1/500 - 1/2000. Immunohistochemistry: 1/100 - 1/300. Immunofluorescence: 1/200 - 1/1000. ELISA: 1/10000. Not yet tested in other applications.
<b>Concentration</b>	1 mg/ml
<b>Purity</b>	≥90%
<b>Storage Stability</b>	-20°C/1 year
<b>Synonyms</b>	DES; Desmin
<b>Observed Band</b>	55kD
<b>Cell Pathway</b>	Cytoplasmic
<b>Tissue Specificity</b>	Muscle,Skeletal muscle,
<b>Function</b>	disease:Defects in DES are the cause of cardiomyopathy dilated type 1I (CMD1I) [MIM:604765]. Dilated cardiomyopathy is a disorder characterized by ventricular dilation and impaired systolic function, resulting in congestive heart failure and arrhythmia. Patients are at risk of premature death.,disease:Defects in DES are the cause of desmin-related cardio-skeletal myopathy (CSM) [MIM:601419]; also known as desmin-related myopathy (DRM). CSM is characterized by skeletal muscle weakness associated with cardiac conduction blocks, arrhythmias, restrictive heart failure, and by intracytoplasmic accumulation of desmin-reactive deposits in cardiac and skeletal muscle cells. A desmin-related myopathy can have a distal onset, it is then known as hereditary distal myopathy

Nanjing BYabscience technology Co.,Ltd



(HDM).,disease:Defects in DES are the cause of neurogenic scapulooperoneal syndrome Kaeser type (Kaeser syndrome) [MIM:181400].

**Background**

This gene encodes a muscle-specific class III intermediate filament. Homopolymers of this protein form a stable intracytoplasmic filamentous network connecting myofibrils to each other and to the plasma membrane. Mutations in this gene are associated with desmin-related myopathy, a familial cardiac and skeletal myopathy (CSM), and with distal myopathies. [provided by RefSeq, Jul 2008],

**matters needing attention**

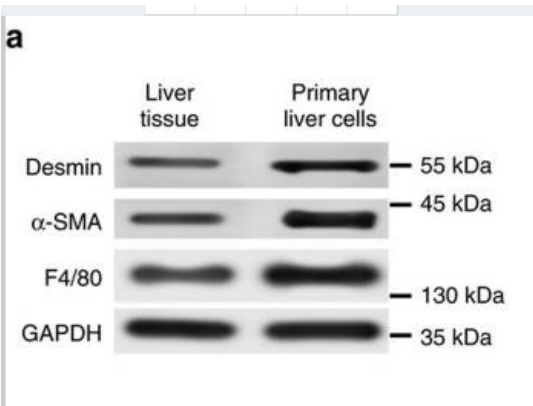
Avoid repeated freezing and thawing!

**Usage suggestions**

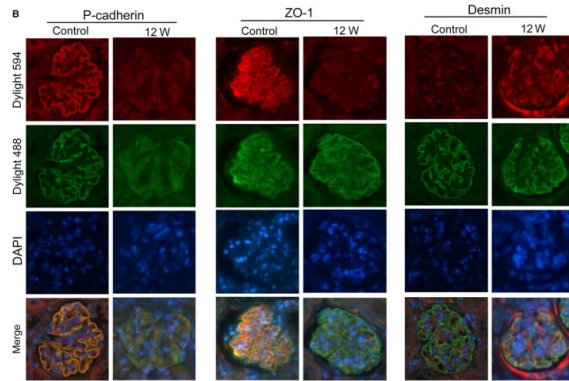
This product can be used in immunological reaction related experiments. For more information, please consult technical personnel.



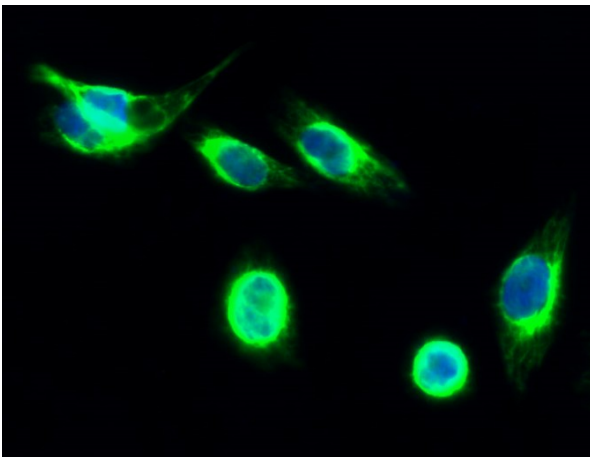
## Products Images



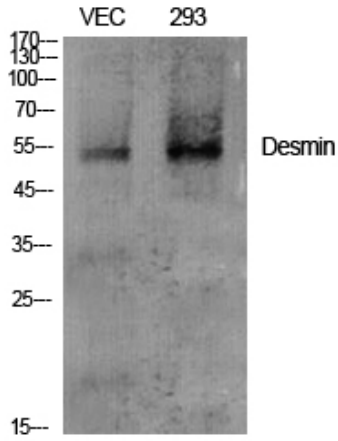
Zhang, Haiyang, et al. "Exosome-delivered EGFR regulates liver microenvironment to promote gastric cancer liver metastasis." *Nature communications* 8 (2017): 15016.



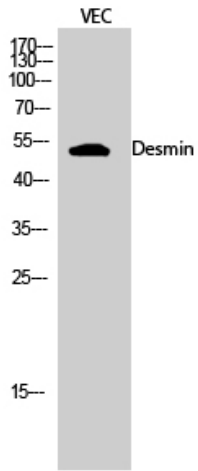
Hu, Mengsi, et al. "Lnc RNA MALAT 1 is dysregulated in diabetic nephropathy and involved in high glucose-induced podocyte injury via its interplay with  $\beta$ -catenin." *Journal of cellular and molecular medicine* 21.11 (2017): 2732-2747.



Immunofluorescence analysis of Hela cell. 1, Desmin Polyclonal Antibody (green) was diluted at 1:200 (4° overnight). 2, Goat Anti Rabbit Alexa Fluor 488 Catalog: RS3211 was diluted at 1:1000 (room temperature, 50min). 3 DAPI (blue) 10min.



Western Blot analysis of various cells using Desmin Polyclonal Antibody diluted at 1:2000



Western Blot analysis of VEC cells using Desmin Polyclonal Antibody diluted at 1:2000