



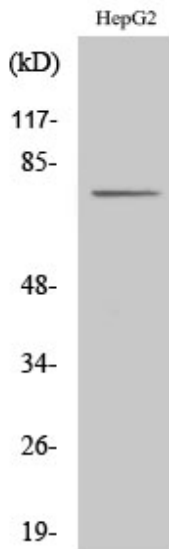
CLIP4 Polyclonal Antibody

Catalog No	BYab-03104
Isotype	IgG
Reactivity	Human;Rat;Mouse;
Applications	WB;ELISA
Gene Name	CLIP4
Protein Name	CAP-Gly domain-containing linker protein 4
Immunogen	The antiserum was produced against synthesized peptide derived from human CLIP4. AA range:321-370
Specificity	CLIP4 Polyclonal Antibody detects endogenous levels of CLIP4 protein.
Formulation	Liquid in PBS containing 50% glycerol, 0.5% BSA and 0.02% sodium azide.
Source	Polyclonal, Rabbit,IgG
Purification	The antibody was affinity-purified from rabbit antiserum by affinity-chromatography using epitope-specific immunogen.
Dilution	Western Blot: 1/500 - 1/2000. ELISA: 1/40000. Not yet tested in other applications.
Concentration	1 mg/ml
Purity	≥90%
Storage Stability	-20°C/1 year
Synonyms	CLIP4; RSNL2; CAP-Gly domain-containing linker protein 4; Restin-like protein 2
Observed Band	76kD
Cell Pathway	integral component of membrane,
Tissue Specificity	Amygdala,Brain,Lung,Prostate,Testis,
Function	similarity:Contains 3 ANK repeats.,similarity:Contains 3 CAP-Gly domains.,
Background	similarity:Contains 3 ANK repeats.,similarity:Contains 3 CAP-Gly domains.,
matters needing attention	Avoid repeated freezing and thawing!
Usage suggestions	This product can be used in immunological reaction related experiments. For more information, please consult technical personnel.

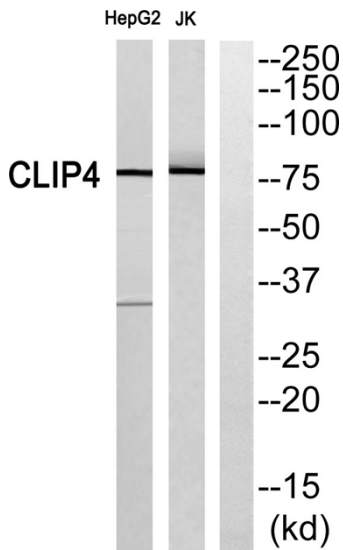
Nanjing BYabscience technology Co.,Ltd



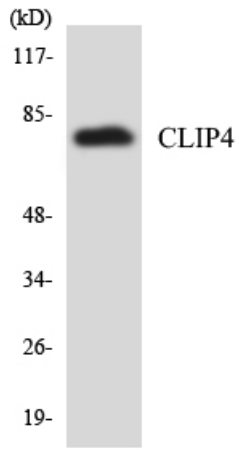
Products Images



Western Blot analysis of various cells using CLIP4 Polyclonal Antibody



Western blot analysis of CLIP4 Antibody. The lane on the right is blocked with the CLIP4 peptide.



Western blot analysis of the lysates from HUVEC cells using CLIP4 antibody.