



CIB3 Polyclonal Antibody

Catalog No	BYab-03100
Isotype	IgG
Reactivity	Human;Mouse
Applications	WB;ELISA
Gene Name	CIB3
Protein Name	Calcium and integrin-binding family member 3
Immunogen	The antiserum was produced against synthesized peptide derived from human CIB3. AA range:138-187
Specificity	CIB3 Polyclonal Antibody detects endogenous levels of CIB3 protein.
Formulation	Liquid in PBS containing 50% glycerol, 0.5% BSA and 0.02% sodium azide.
Source	Polyclonal, Rabbit,IgG
Purification	The antibody was affinity-purified from rabbit antiserum by affinity-chromatography using epitope-specific immunogen.
Dilution	Western Blot: 1/500 - 1/2000. ELISA: 1/20000. Not yet tested in other applications.
Concentration	1 mg/ml
Purity	≥90%
Storage Stability	-20°C/1 year
Synonyms	CIB3; KIP3; Calcium and integrin-binding family member 3; Kinase-interacting protein 3; KIP 3
Observed Band	32kD
Cell Pathway	
Tissue Specificity	PCR rescued clones,
Function	similarity:Contains 3 EF-hand domains.,
Background	This gene product shares a high degree of sequence similarity with DNA-dependent protein kinase catalytic subunit-interacting protein 2 in human and mouse, and like them may bind the catalytic subunit of DNA-dependent protein kinases. The exact function of this gene is not known. Alternative splicing results in multiple transcript variants. [provided by RefSeq, Jul 2014],

Nanjing BYabscience technology Co.,Ltd



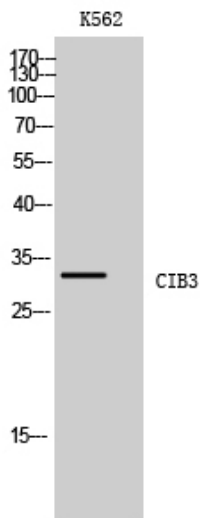
matters needing attention

Avoid repeated freezing and thawing!

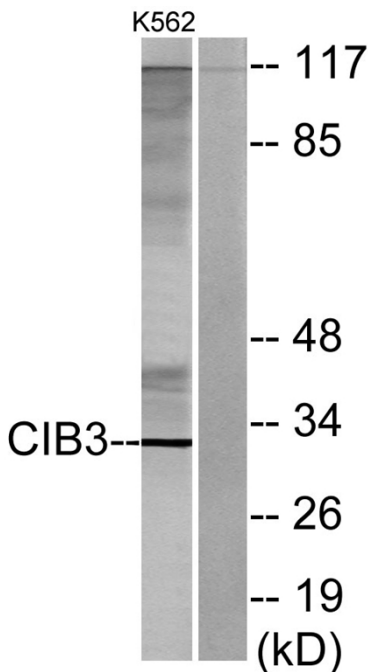
Usage suggestions

This product can be used in immunological reaction related experiments. For more information, please consult technical personnel.

Products Images



Western Blot analysis of K562 cells using CIB3 Polyclonal Antibody



Western blot analysis of lysates from K562 cells, using CIB3 Antibody. The lane on the right is blocked with the synthesized peptide.

Nanjing BYabscience technology Co.,Ltd