



# Centrobin Polyclonal Antibody

<b>Catalog No</b>	BYab-03096
<b>Isotype</b>	IgG
<b>Reactivity</b>	Human;Rat;Mouse;
<b>Applications</b>	WB;IHC;IF;ELISA
<b>Gene Name</b>	CNTROB
<b>Protein Name</b>	Centrobin
<b>Immunogen</b>	The antiserum was produced against synthesized peptide derived from human CNTROB. AA range:591-640
<b>Specificity</b>	Centrobin Polyclonal Antibody detects endogenous levels of Centrobin protein.
<b>Formulation</b>	Liquid in PBS containing 50% glycerol, 0.5% BSA and 0.02% sodium azide.
<b>Source</b>	Polyclonal, Rabbit,IgG
<b>Purification</b>	The antibody was affinity-purified from rabbit antiserum by affinity-chromatography using epitope-specific immunogen.
<b>Dilution</b>	WB: 1/500 - 1/2000. IHC: 1/100 - 1/300. ELISA: 1/5000.. IF 1:50-200
<b>Concentration</b>	1 mg/ml
<b>Purity</b>	≥90%
<b>Storage Stability</b>	-20°C/1 year
<b>Synonyms</b>	CNTROB; LIP8; PP1221; Centrobin; Centrosomal BRCA2-interacting protein; LYST-interacting protein 8
<b>Observed Band</b>	100kD
<b>Cell Pathway</b>	Cytoplasm, cytoskeleton, microtubule organizing center, centrosome, centriole . Centriole-associated, asymmetrically localizes to the daughter centriole.
<b>Tissue Specificity</b>	Widely expressed (at protein level). Highly expressed in testis. Also expressed in spleen, thymus, prostate, small intestine, colon and peripheral blood leukocytes.
<b>Function</b>	developmental stage:Preferentially incorporated into the newly assembled daughter centriole during centriole assembly at the late G1 or early S phase. Remains in the daughter centrioles throughout the cell cycle. At the next cycle of centriole duplication, its amount on the original daughter centriole eventually decreases.,function:Required for centriole duplication. Inhibition of centriole duplication leading to defects in cytokinesis.,PTM:Phosphorylated upon DNA damage, probably by ATM or ATR.,sequence caution:Wrong choice of frame.,subcellular location:Centriole-associated, asymmetrically localizes to the daughter centriole.,subunit:Interacts with LYST.,tissue specificity:Widely expressed (at protein level). Highly expressed in testis. Also expressed in spleen,

**Nanjing BYabscience technology Co.,Ltd**



thymus, prostate, small intestine, colon and peripheral blood leukocytes.,

### Background

This gene encodes a centrosomal protein that interacts with BRCA2, and is required for centriole duplication and cytokinesis. Alternatively spliced transcript variants encoding different isoforms have been described for this gene. [provided by RefSeq, Aug 2011],

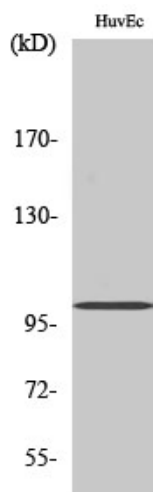
### matters needing attention

Avoid repeated freezing and thawing!

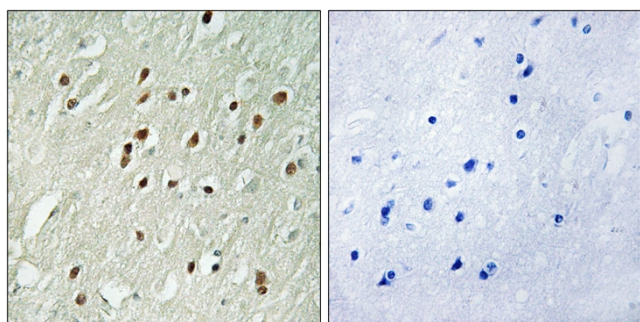
### Usage suggestions

This product can be used in immunological reaction related experiments. For more information, please consult technical personnel.

## Products Images



Western Blot analysis of various cells using Centrobins Polyclonal Antibody



Immunohistochemistry analysis of paraffin-embedded human brain, using CNTROB Antibody. The picture on the right is blocked with the synthesized peptide.