



CALML5 Polyclonal Antibody

Catalog No	BYab-03093
Isotype	IgG
Reactivity	Human;Rat;Mouse;
Applications	IHC;IF;ELISA
Gene Name	CALML5
Protein Name	Calmodulin-like protein 5
Immunogen	The antiserum was produced against synthesized peptide derived from human CALML5. AA range:96-146
Specificity	CALML5 Polyclonal Antibody detects endogenous levels of CALML5 protein.
Formulation	Liquid in PBS containing 50% glycerol, 0.5% BSA and 0.02% sodium azide.
Source	Polyclonal, Rabbit,IgG
Purification	The antibody was affinity-purified from rabbit antiserum by affinity-chromatography using epitope-specific immunogen.
Dilution	IHC: 1/100 - 1/300. ELISA: 1/10000.. IF 1:50-200
Concentration	1 mg/ml
Purity	≥90%
Storage Stability	-20°C/1 year
Synonyms	CALML5; CLSP; Calmodulin-like protein 5; Calmodulin-like skin protein
Observed Band	
Cell Pathway	extracellular exosome,
Tissue Specificity	Particularly abundant in the epidermis where its expression is directly related to keratinocyte differentiation. Very low expression in lung.
Function	function:Binds calcium. May be involved in terminal differentiation of keratinocytes.,similarity:Contains 4 EF-hand domains.,subunit:Associates with transglutaminase 3.,tissue specificity:Particularly abundant in the epidermis where its expression is directly related to keratinocyte differentiation. Very low expression in lung.,
Background	This gene encodes a novel calcium binding protein expressed in the epidermis and related to the calmodulin family of calcium binding proteins. Functional studies with recombinant protein demonstrate it does bind calcium and undergoes a conformational change when it does so. Abundant expression is detected only in reconstructed epidermis and is restricted to differentiating keratinocytes. In

Nanjing BYabscience technology Co.,Ltd



addition, it can associate with transglutaminase 3, shown to be a key enzyme in the terminal differentiation of keratinocytes. [provided by RefSeq, Jul 2008],

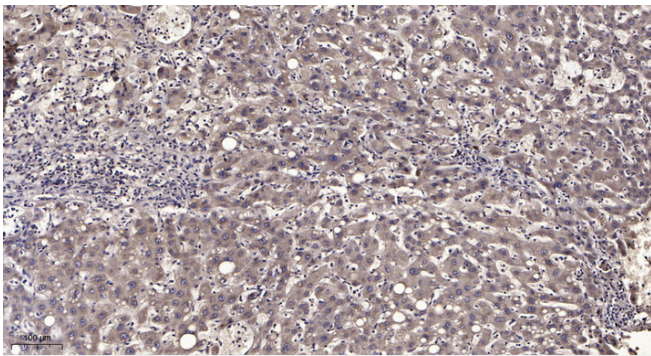
matters needing attention

Avoid repeated freezing and thawing!

Usage suggestions

This product can be used in immunological reaction related experiments. For more information, please consult technical personnel.

Products Images



Immunohistochemical analysis of paraffin-embedded human liver cancer. 1, Antibody was diluted at 1:200(4° overnight). 2, Tris-EDTA,pH9.0 was used for antigen retrieval. 3,Secondary antibody was diluted at 1:200(room temperature, 45min).