



Arp3 Polyclonal Antibody

| | |
|---------------------------|---|
| Catalog No | BYab-03087 |
| Isotype | IgG |
| Reactivity | Human;Mouse;Rat |
| Applications | WB;ELISA |
| Gene Name | ACTR3 |
| Protein Name | Actin-related protein 3 |
| Immunogen | The antiserum was produced against synthesized peptide derived from human ACTR3. AA range:369-418 |
| Specificity | Arp3 Polyclonal Antibody detects endogenous levels of Arp3 protein. |
| Formulation | Liquid in PBS containing 50% glycerol, 0.5% BSA and 0.02% sodium azide. |
| Source | Polyclonal, Rabbit,IgG |
| Purification | The antibody was affinity-purified from rabbit antiserum by affinity-chromatography using epitope-specific immunogen. |
| Dilution | Western Blot: 1/500 - 1/2000. ELISA: 1/40000. Not yet tested in other applications. |
| Concentration | 1 mg/ml |
| Purity | ≥90% |
| Storage Stability | -20°C/1 year |
| Synonyms | ACTR3; ARP3; Actin-related protein 3; Actin-like protein 3 |
| Observed Band | 47kD |
| Cell Pathway | Cytoplasm, cytoskeleton . Cell projection . Nucleus . In pre-apoptotic cells, colocalizes with MEFV in large specks (pyroptosomes) (PubMed:19109554). |
| Tissue Specificity | Brain,Cajal-Retzius cell,T-cell, |
| Function | function:Functions as ATP-binding component of the Arp2/3 complex which is involved in regulation of actin polymerization and together with an activating nucleation-promoting factor (NPF) mediates the formation of branched actin networks. Seems to contact the pointed end of the daughter actin filament.,similarity:Belongs to the actin family.,similarity:Belongs to the actin family. ARP3 subfamily.,subunit:Component of the Arp2/3 complex composed of ARP2, ARP3, ARPC1B/p41-ARC, ARPC2/p34-ARC, ARPC3/p21-ARC, ARPC4/p20-ARC and ARPC5/p16-ARC. Interacts with WHDC1., |
| Background | The specific function of this gene has not yet been determined; however, the protein it encodes is known to be a major constituent of the ARP2/3 complex. This |

Nanjing BYabscience technology Co.,Ltd



complex is located at the cell surface and is essential to cell shape and motility through lamellipodial actin assembly and protrusion. Three transcript variants encoding two different isoforms have been found for this gene. [provided by RefSeq, Mar 2013],

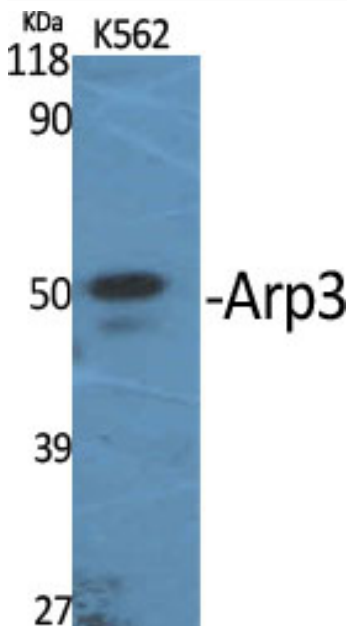
matters needing attention

Avoid repeated freezing and thawing!

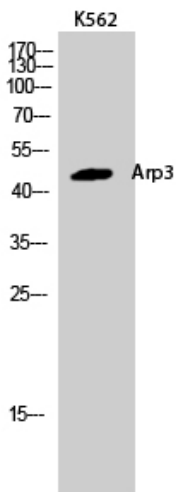
Usage suggestions

This product can be used in immunological reaction related experiments. For more information, please consult technical personnel.

Products Images

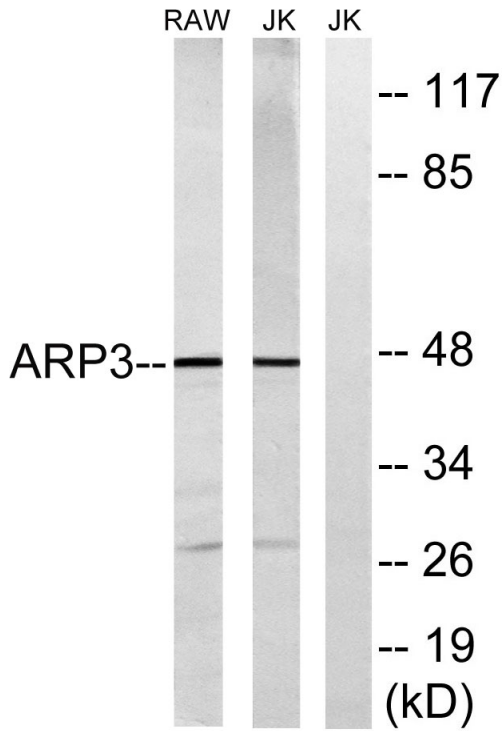


Western Blot analysis of various cells using Arp3 Polyclonal Antibody

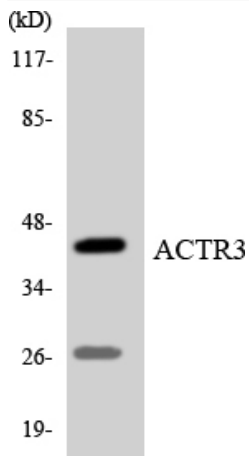


Western Blot analysis of K562 cells using Arp3 Polyclonal Antibody

Nanjing BYabscience technology Co.,Ltd



Western blot analysis of lysates from Jurkat and RAW264.7 cells, using ACTR3 Antibody. The lane on the right is blocked with the synthesized peptide.



Western blot analysis of the lysates from COLO205 cells using ACTR3 antibody.