



Actin- κ Polyclonal Antibody

Catalog No	BYab-03081
Isotype	IgG
Reactivity	Human;Mouse
Applications	WB;ELISA
Gene Name	ACTBL2
Protein Name	Beta-actin-like protein 2
Immunogen	The antiserum was produced against synthesized peptide derived from human ACTBL2. AA range:81-130
Specificity	Actin- κ Polyclonal Antibody detects endogenous levels of Actin- κ protein.
Formulation	Liquid in PBS containing 50% glycerol, 0.5% BSA and 0.02% sodium azide.
Source	Polyclonal, Rabbit,IgG
Purification	The antibody was affinity-purified from rabbit antiserum by affinity-chromatography using epitope-specific immunogen.
Dilution	Western Blot: 1/500 - 1/2000. ELISA: 1/20000. Not yet tested in other applications.
Concentration	1 mg/ml
Purity	$\geq 90\%$
Storage Stability	-20°C/1 year
Synonyms	ACTBL2; Beta-actin-like protein 2; Kappa-actin
Observed Band	40kD
Cell Pathway	Cytoplasm, cytoskeleton .
Tissue Specificity	Endometrial tumor,Hepatoma,
Function	function:Actins are highly conserved proteins that are involved in various types of cell motility and are ubiquitously expressed in all eukaryotic cells.,miscellaneous:In vertebrates 3 main groups of actin isoforms, alpha, beta and gamma have been identified. The alpha actins are found in muscle tissues and are a major constituent of the contractile apparatus. The beta and gamma actins coexist in most cell types as components of the cytoskeleton and as mediators of internal cell motility.,similarity:Belongs to the actin family.,subunit:Polymerization of globular actin (G-actin) leads to a structural filament (F-actin) in the form of a two-stranded helix. Each actin can bind to 4 others (By similarity). Interacts with PFN1 and PFDN1.,

Nanjing BYabscience technology Co.,Ltd



Background

function:Actins are highly conserved proteins that are involved in various types of cell motility and are ubiquitously expressed in all eukaryotic cells.,miscellaneous:In vertebrates 3 main groups of actin isoforms, alpha, beta and gamma have been identified. The alpha actins are found in muscle tissues and are a major constituent of the contractile apparatus. The beta and gamma actins coexist in most cell types as components of the cytoskeleton and as mediators of internal cell motility.,similarity:Belongs to the actin family.,subunit:Polymerization of globular actin (G-actin) leads to a structural filament (F-actin) in the form of a two-stranded helix. Each actin can bind to 4 others (By similarity). Interacts with PFN1 and PFDN1.,

matters needing attention

Avoid repeated freezing and thawing!

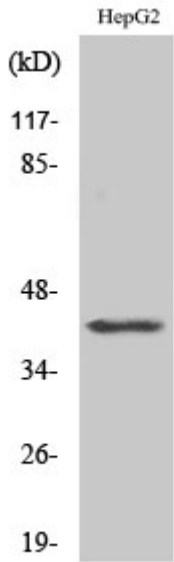
Usage suggestions

This product can be used in immunological reaction related experiments. For more information, please consult technical personnel.

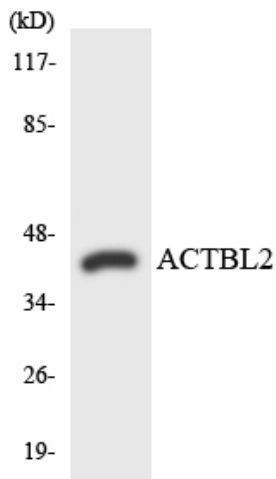
Nanjing BYabscience technology Co.,Ltd



Products Images



Western Blot analysis of various cells using Actin-k Polyclonal Antibody



Western blot analysis of the lysates from HUVEC cells using ACTBL2 antibody.