



Tensin-1 (phospho Tyr1326) Polyclonal Antibody

Catalog No	BYab-03065
Isotype	IgG
Reactivity	Human;Mouse
Applications	WB;ELISA
Gene Name	TNS1
Protein Name	Tensin-1
Immunogen	Synthesized phospho-peptide around the phosphorylation site of human Tensin-1 (phospho Tyr1326)
Specificity	Phospho-Tensin-1 (Y1326) Polyclonal Antibody detects endogenous levels of Tensin-1 protein only when phosphorylated at Y1326.
Formulation	Liquid in PBS containing 50% glycerol, 0.5% BSA and 0.02% sodium azide.
Source	Polyclonal, Rabbit,IgG
Purification	The antibody was affinity-purified from rabbit antiserum by affinity-chromatography using epitope-specific immunogen.
Dilution	Western Blot: 1/500 - 1/2000. ELISA: 1/20000. Not yet tested in other applications.
Concentration	1 mg/ml
Purity	≥90%
Storage Stability	-20°C/1 year
Synonyms	TNS1; TNS; Tensin-1
Observed Band	185kD
Cell Pathway	Cell surface . Cell junction, focal adhesion . Cytoplasm, cytoskeleton . Localized at cell periphery preferentially to fibrillar adhesions than focal adhesions. Translocates from the cell edge to cell center in an ITGB1BP1-dependent manner.
Tissue Specificity	Ubiquitous.
Function	function:May be involved in cell migration, cartilage development and in linking signal transduction pathways to the cytoskeleton.,PTM:Rapidly cleaved by calpain II.,PTM:Tyrosine phosphorylated.,similarity:Contains 1 C2 tensin-type domain.,similarity:Contains 1 phosphatase tensin-type domain.,similarity:Contains 1 SH2 domain.,subunit:Binds to actin filaments and interacts with phosphotyrosine-containing proteins. Interacts with STARD8.,tissue specificity:Ubiquitous.,

Nanjing BYabscience technology Co.,Ltd



Background

The protein encoded by this gene localizes to focal adhesions, regions of the plasma membrane where the cell attaches to the extracellular matrix. This protein crosslinks actin filaments and contains a Src homology 2 (SH2) domain, which is often found in molecules involved in signal transduction. This protein is a substrate of calpain II. Alternative splicing results in multiple transcript variants encoding different isoforms. [provided by RefSeq, Apr 2015],

matters needing attention

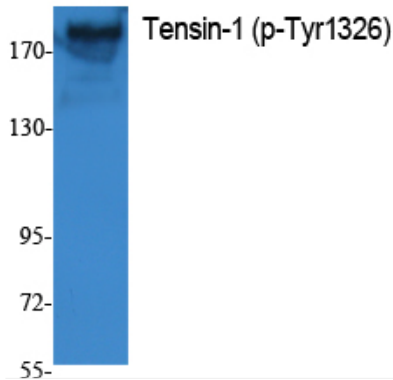
Avoid repeated freezing and thawing!

Usage suggestions

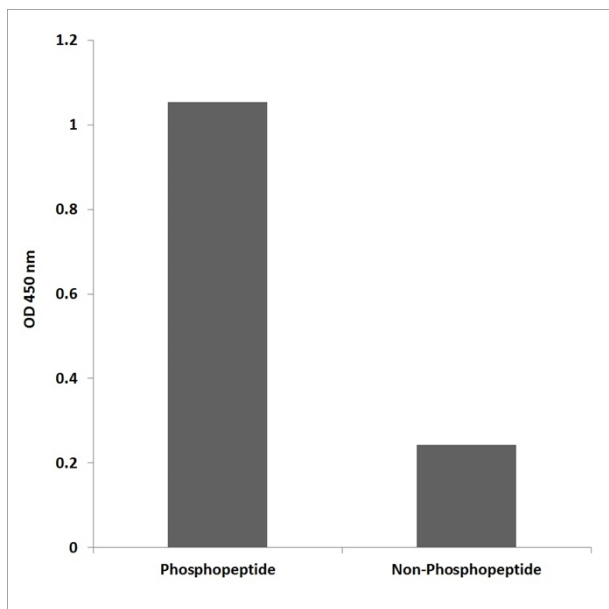
This product can be used in immunological reaction related experiments. For more information, please consult technical personnel.

Products Images

(kD)

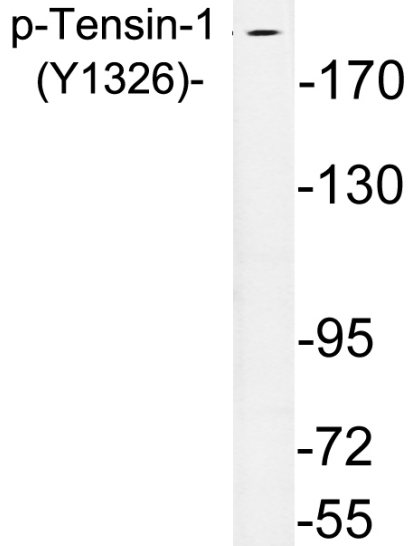


Western Blot analysis of extracts from K562 cells, using Phospho-Tensin-1 (Y1326) Polyclonal Antibody.



Enzyme-Linked Immunosorbent Assay (Phospho-ELISA) for Immunogen Phosphopeptide (Phospho-left) and Non-Phosphopeptide (Phospho-right), using Tensin-1 (Phospho-Tyr1326) Antibody

Nanjing BYabscience technology Co.,Ltd



Western blot analysis of lysates from A10 cells, using phospho-Tensin-1 (Phospho-Tyr1326) antibody.