



MAP-2 Monoclonal Antibody

Catalog No	BYab-02952
Isotype	IgG
Reactivity	Human;Mouse;Rat;Bovine;Pig
Applications	WB;IF
Gene Name	MAP2
Protein Name	Microtubule-associated protein 2
Immunogen	Purified recombinant human MAP-2 (N-terminus) protein fragments expressed in E.coli.
Specificity	MAP-2 Monoclonal Antibody detects endogenous levels of MAP-2 protein.
Formulation	Purified mouse monoclonal in buffer containing 0.1M Tris-Glycine (pH 7.4, 150 mM NaCl) with 0.2% sodium azide, 50% glycerol.
Source	Monoclonal, Mouse
Purification	Affinity purification
Dilution	Western Blot: 1/1000 - 1/2000. Immunofluorescence: 1/100 - 1/500. Not yet tested in other applications.
Concentration	1 mg/ml
Purity	≥90%
Storage Stability	-20°C/1 year
Synonyms	MAP2; Microtubule-associated protein 2; MAP-2
Observed Band	
Cell Pathway	Cytoplasm, cytoskeleton . Cell projection, dendrite .
Tissue Specificity	Brain,Brain cortex,Epithelium,Pancreas,Testis,
Function	alternative products:Additional isoforms seem to exist,function:The exact function of MAP2 is unknown but MAPs may stabilize the microtubules against depolymerization. They also seem to have a stiffening effect on microtubules.,PTM:MAP2A/c is phosphorylated. Phosphorylated upon DNA damage, probably by ATM or ATR.,similarity:Contains 3 Tau/MAP repeats.,similarity:Contains 4 Tau/MAP repeats.,
Background	This gene encodes a protein that belongs to the microtubule-associated protein family. The proteins of this family are thought to be involved in microtubule assembly, which is an essential step in neurogenesis. The products of similar genes in rat and mouse are neuron-specific cytoskeletal proteins that are enriched

Nanjing BYabscience technology Co.,Ltd



in dendrites, implicating a role in determining and stabilizing dendritic shape during neuron development. A number of alternatively spliced variants encoding distinct isoforms have been described. [provided by RefSeq, Jan 2010],

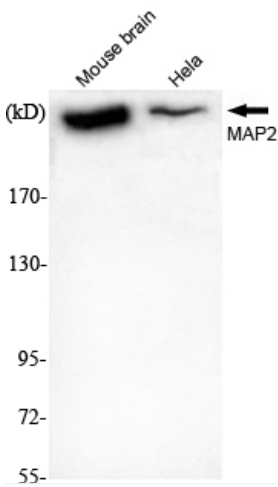
matters needing attention

Avoid repeated freezing and thawing!

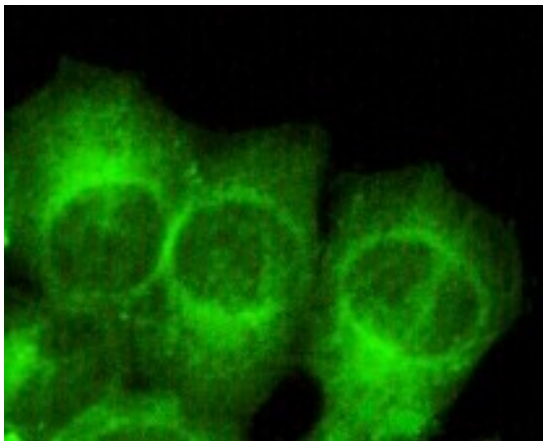
Usage suggestions

This product can be used in immunological reaction related experiments. For more information, please consult technical personnel.

Products Images



Western Blot analysis using MAP-2 Monoclonal Antibody against mouse brain, HeLa cell lysate.



Immunofluorescence analysis of HeLa cells using MAP-2 Monoclonal Antibody.