



S-100A10 Monoclonal Antibody

Catalog No	BYab-02940
Isotype	IgG
Reactivity	Human
Applications	WB;IHC;IF;ELISA
Gene Name	S100A10
Protein Name	Protein S100-A10
Immunogen	Purified recombinant fragment of human S-100A10 expressed in E. Coli.
Specificity	S-100A10 Monoclonal Antibody detects endogenous levels of S-100A10 protein.
Formulation	Ascitic fluid containing 0.03% sodium azide,0.5% BSA, 50%glycerol.
Source	Monoclonal, Mouse
Purification	Affinity purification
Dilution	Western Blot: 1/500 - 1/2000. Immunohistochemistry: 1/200 - 1/1000. Immunofluorescence: 1/200 - 1/1000. ELISA: 1/10000. Not yet tested in other applications.
Concentration	1 mg/ml
Purity	≥90%
Storage Stability	-20°C/1 year
Synonyms	S100A10; ANX2LG; CAL1L; CLP11; Protein S100-A10; Calpactin I light chain; Calpactin-1 light chain; Cellular ligand of annexin II; S100 calcium-binding protein A10; p10 protein; p11
Observed Band	
Cell Pathway	integral component of membrane,extrinsic component of plasma membrane,membrane raft,extracellular exosome,
Tissue Specificity	Brain,Keratinocyte,
Function	function:Because S100A10 induces the dimerization of ANXA2/p36, it may function as a regulator of protein phosphorylation in that the ANXA2 monomer is the preferred target (in vitro) of tyrosine-specific kinase.,miscellaneous:Does not appear to bind calcium. Contains 2 ancestral calcium site related to EF-hand domains that have lost their ability to bind calcium.,similarity:Belongs to the S-100 family.,subunit:Heterotetramer containing 2 light chains of S100A10/p11 and 2 heavy chains of ANXA2/p36. Interacts with SCN10A.,

Nanjing BYabscience technology Co.,Ltd



Background

The protein encoded by this gene is a member of the S100 family of proteins containing 2 EF-hand calcium-binding motifs. S100 proteins are localized in the cytoplasm and/or nucleus of a wide range of cells, and involved in the regulation of a number of cellular processes such as cell cycle progression and differentiation. S100 genes include at least 13 members which are located as a cluster on chromosome 1q21. This protein may function in exocytosis and endocytosis. [provided by RefSeq, Jul 2008],

matters needing attention

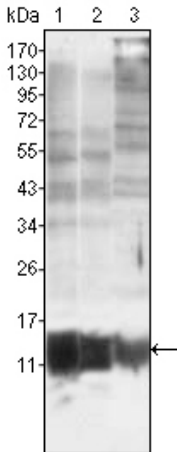
Avoid repeated freezing and thawing!

Usage suggestions

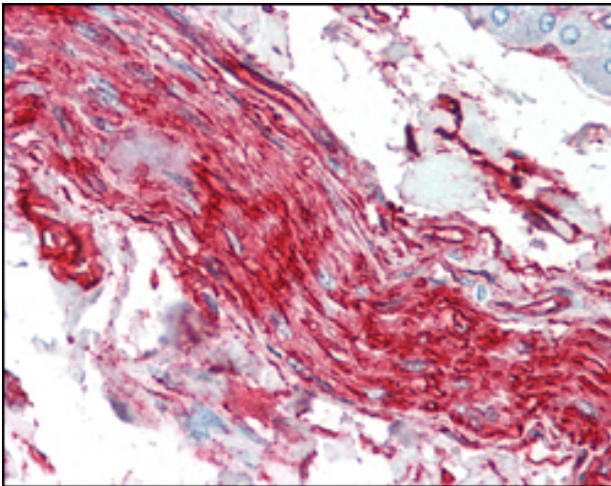
This product can be used in immunological reaction related experiments. For more information, please consult technical personnel.



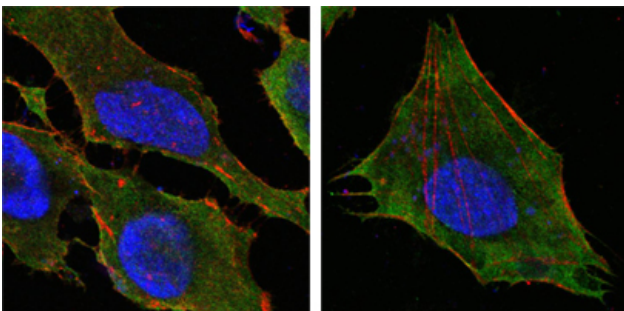
Products Images



Western Blot analysis using S-100A10 Monoclonal Antibody against MCF-7 (1), HepG2 (2) and HeLa (3).



Immunohistochemistry analysis of paraffin-embedded human nerve and ganglion cells with AEC staining using S-100A10 Monoclonal Antibody.



Confocal immunofluorescence analysis of HeLa (left) and L-02 (right) cells using S-100A10 Monoclonal Antibody (green). Red: Actin filaments have been labeled with DY-554 phalloidin. Blue: DRAQ5 fluorescent DNA dye.

Nanjing BYabscience technology Co.,Ltd