



KID Monoclonal Antibody

Catalog No	BYab-02933
Isotype	IgG
Reactivity	Human
Applications	WB;IHC;IF;FCM;ELISA
Gene Name	KIF22
Protein Name	Kinesin-like protein KIF22
Immunogen	Purified recombinant fragment of human KID expressed in E. Coli.
Specificity	KID Monoclonal Antibody detects endogenous levels of KID protein.
Formulation	Ascitic fluid containing 0.03% sodium azide,0.5% BSA, 50%glycerol.
Source	Monoclonal, Mouse
Purification	Affinity purification
Dilution	WB: 1/500 - 1/2000. IHC: 1/200 - 1/1000. Flow cytometry: 1/200 - 1/400. ELISA: 1/10000.. IF 1:50-200
Concentration	1 mg/ml
Purity	≥90%
Storage Stability	-20°C/1 year
Synonyms	KIF22; KID; KNSL4; Kinesin-like protein KIF22; Kinesin-like DNA-binding protein; Kinesin-like protein 4
Observed Band	
Cell Pathway	Nucleus . Cytoplasm, cytoskeleton .
Tissue Specificity	Expressed in bone, cartilage, joint capsule, ligament, skin, and primary cultured chondrocytes.
Function	function:Kinesin family that is involved in spindle formation and the movements of chromosomes during mitosis and meiosis. Binds to microtubules and to DNA.,PTM:Phosphorylated upon DNA damage, probably by ATM or ATR.,PTM:Ubiquitinated; mediated by SIAH1 and leading to its subsequent proteasomal degradation.,similarity:Belongs to the kinesin-like protein family.,similarity:Contains 1 kinesin-motor domain.,subunit:Interacts with FAM83D.,
Background	kinesin family member 22(KIF22) Homo sapiens The protein encoded by this gene is a member of the kinesin-like protein family. The family members are microtubule-dependent molecular motors that transport organelles within cells and move chromosomes during cell division. The C-terminal half of this protein has

Nanjing BYabscience technology Co.,Ltd



been shown to bind DNA. Studies with the Xenopus homolog suggests its essential role in metaphase chromosome alignment and maintenance. Alternatively spliced transcript variants encoding different isoforms have been found for this gene. [provided by RefSeq, Jan 2012],

matters needing attention

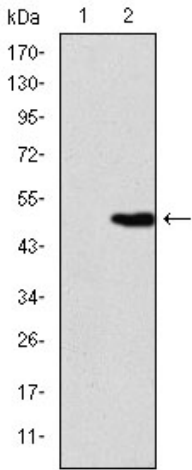
Avoid repeated freezing and thawing!

Usage suggestions

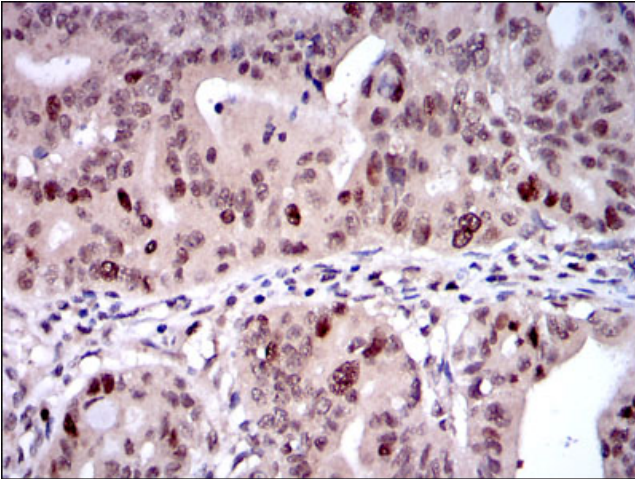
This product can be used in immunological reaction related experiments. For more information, please consult technical personnel.



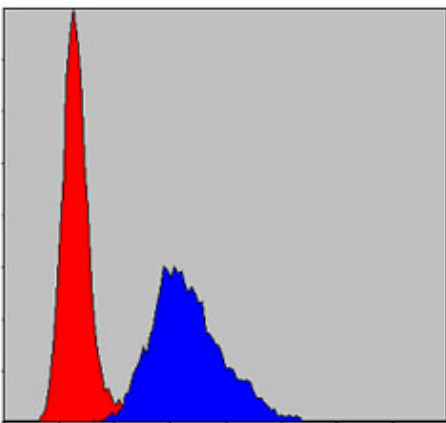
Products Images



Western Blot analysis using KID Monoclonal Antibody against HEK293 (1) and KID-hlgGfc transfected HEK293 (2) cell lysate.



Immunohistochemistry analysis of paraffin-embedded rectum cancer tissues with DAB staining using KID Monoclonal Antibody.



Flow cytometric analysis of NIH/3T3 cells using KID Monoclonal Antibody (blue) and negative control (red).

Nanjing BYabscience technology Co.,Ltd

