



# DCT Polyclonal Antibody

<b>Catalog No</b>	BYab-02894
<b>Isotype</b>	IgG
<b>Reactivity</b>	Human;Mouse;(93%)
<b>Applications</b>	WB;ELISA
<b>Gene Name</b>	DCT TYRP2
<b>Protein Name</b>	DCT
<b>Immunogen</b>	Synthetic peptide from human protein at AA range: 171-244
<b>Specificity</b>	The antibody detects endogenous DCT
<b>Formulation</b>	Liquid in PBS containing 50% glycerol, 0.5% BSA and 0.02% sodium azide.
<b>Source</b>	Polyclonal, Rabbit,IgG
<b>Purification</b>	The antibody was affinity-purified from rabbit antiserum by affinity-chromatography using epitope-specific immunogen.
<b>Dilution</b>	WB 1:500-2000, ELISA 1:10000-20000
<b>Concentration</b>	1 mg/ml
<b>Purity</b>	≥90%
<b>Storage Stability</b>	-20°C/1 year
<b>Synonyms</b>	L-dopachrome tautomerase (DCT) (DT) (EC 5.3.3.12) (L-dopachrome Delta-isomerase) (Tyrosinase-related protein 2) (TRP-2) (TRP2)
<b>Observed Band</b>	59kD
<b>Cell Pathway</b>	Melanosome membrane ; Single-pass type I membrane protein . Melanosome . Proper trafficking to melanosome is regulated by SGSM2, ANKRD27, RAB9A, RAB32 and RAB38. .
<b>Tissue Specificity</b>	Liver,Lymphnode melanoma metastases,Mammary gland,Melanoma,
<b>Function</b>	catalytic activity:L-dopachrome = 5,6-dihydroxyindole-2-carboxylate.,cofactor: Binds 2 zinc ions per subunit.,function:Involved in regulating eumelanin and pheomelanin levels.,pathway:Pigment biosynthesis; melanin biosynthesis.,similarity:Belongs to the tyrosinase family.,subunit:Tyrosinase, TYRP1 and TYRP2 may form a multienzyme complex.,
<b>Background</b>	catalytic activity:L-dopachrome = 5,6-dihydroxyindole-2-carboxylate.,cofactor: Binds 2 zinc ions per subunit.,function:Involved in regulating eumelanin and pheomelanin

Nanjing BYabscience technology Co.,Ltd



levels.,pathway:Pigment biosynthesis; melanin biosynthesis.,similarity:Belongs to the tyrosinase family.,subunit:Tyrosinase, TYRP1 and TYRP2 may form a multienzyme complex.,

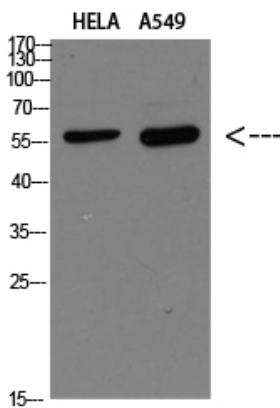
**matters needing attention**

Avoid repeated freezing and thawing!

**Usage suggestions**

This product can be used in immunological reaction related experiments. For more information, please consult technical personnel.

**Products Images**



Western blot analysis of HELA A549 Cell Lysate, antibody was diluted at 1:1000. Secondary antibody(catalog#:RS0002) was diluted at 1:20000