



FAT10 Polyclonal Antibody

Catalog No	BYab-02888
Isotype	IgG
Reactivity	Human;Rat;Mouse;
Applications	WB;ELISA
Gene Name	UBD
Protein Name	Ubiquitin D
Immunogen	Synthesized peptide derived from the Internal region of human FAT10.
Specificity	FAT10 Polyclonal Antibody detects endogenous levels of FAT10 protein.
Formulation	Liquid in PBS containing 50% glycerol, 0.5% BSA and 0.02% sodium azide.
Source	Polyclonal, Rabbit,IgG
Purification	The antibody was affinity-purified from rabbit antiserum by affinity-chromatography using epitope-specific immunogen.
Dilution	Western Blot: 1/500 - 1/2000. ELISA: 1/10000. Not yet tested in other applications.
Concentration	1 mg/ml
Purity	≥90%
Storage Stability	-20°C/1 year
Synonyms	UBD; FAT10; Ubiquitin D; Diubiquitin; Ubiquitin-like protein FAT10
Observed Band	18kD
Cell Pathway	Nucleus . Cytoplasm . Accumulates in aggresomes under proteasome inhibition conditions.
Tissue Specificity	Constitutively expressed in mature dendritic cells and B-cells. Mostly expressed in the reticuloendothelial system (e.g. thymus, spleen), the gastrointestinal system, kidney, lung and prostate gland.
Function	similarity:Contains 2 ubiquitin-like domains.,subunit:Interacts with MAD2.,
Background	similarity:Contains 2 ubiquitin-like domains.,subunit:Interacts with MAD2.,
matters needing attention	Avoid repeated freezing and thawing!

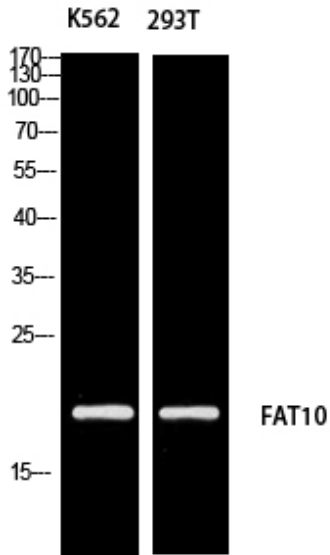
Nanjing BYabscience technology Co.,Ltd



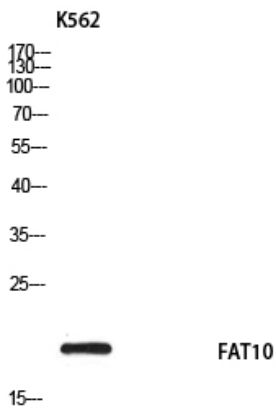
Usage suggestions

This product can be used in immunological reaction related experiments. For more information, please consult technical personnel.

Products Images



Western blot analysis of K562 293T using FAT10 antibody. Antibody was diluted at 1:1000. Secondary antibody(catalog#:RS0002) was diluted at 1:20000



Western blot analysis of K562 using FAT10 antibody. Antibody was diluted at 1:1000. Secondary antibody(catalog#:RS0002) was diluted at 1:20000