



IFITM2 Polyclonal Antibody

Catalog No	BYab-02878
Isotype	IgG
Reactivity	Human;Rat;Mouse;
Applications	WB;ELISA
Gene Name	IFITM2
Protein Name	Interferon-induced transmembrane protein 2
Immunogen	The antiserum was produced against synthesized peptide derived from the Internal region of human IFITM2. AA range:1-50
Specificity	IFITM2 Polyclonal Antibody detects endogenous levels of IFITM2 protein.
Formulation	Liquid in PBS containing 50% glycerol, 0.5% BSA and 0.02% sodium azide.
Source	Polyclonal, Rabbit,IgG
Purification	The antibody was affinity-purified from rabbit antiserum by affinity-chromatography using epitope-specific immunogen.
Dilution	Western Blot: 1/500 - 1/2000. ELISA: 1/20000. Not yet tested in other applications.
Concentration	1 mg/ml
Purity	≥90%
Storage Stability	-20°C/1 year
Synonyms	IFITM2; Interferon-induced transmembrane protein 2; Dispanin subfamily A member 2c; DSPA2c; Interferon-inducible protein 1-8D
Observed Band	15kD
Cell Pathway	Cell membrane ; Single-pass type II membrane protein . Lysosome membrane ; Single-pass type II membrane protein . Late endosome membrane ; Single-pass type II membrane protein .
Tissue Specificity	Lung,
Function	induction:By alpha and gamma interferons.,similarity:Belongs to the CD225 family.,
Background	induction:By alpha and gamma interferons.,similarity:Belongs to the CD225 family.,
matters needing attention	Avoid repeated freezing and thawing!

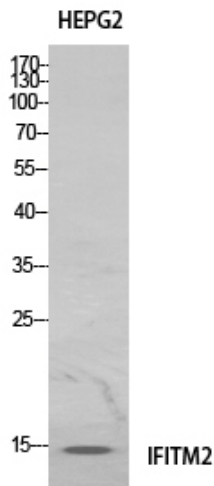
Nanjing BYabscience technology Co.,Ltd



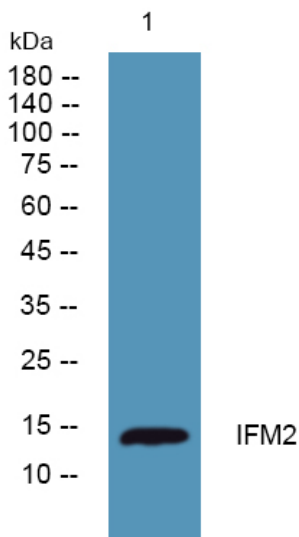
Usage suggestions

This product can be used in immunological reaction related experiments. For more information, please consult technical personnel.

Products Images



Western Blot analysis of HeLa cells using IFITM2 Polyclonal Antibody. Antibody was diluted at 1:1000. Secondary antibody(catalog#:RS0002) was diluted at 1:20000



Western blot analysis of lysates from SW480 cells, primary antibody was diluted at 1:1000, 4° over night