



# HDC Polyclonal Antibody

<b>Catalog No</b>	BYab-02862
<b>Isotype</b>	IgG
<b>Reactivity</b>	Human;Mouse;Rat
<b>Applications</b>	WB;IHC;IF;ELISA
<b>Gene Name</b>	HDC
<b>Protein Name</b>	Histidine decarboxylase
<b>Immunogen</b>	The antiserum was produced against synthesized peptide derived from the Internal region of human HDC. AA range:201-250
<b>Specificity</b>	HDC Polyclonal Antibody detects endogenous levels of HDC protein.
<b>Formulation</b>	Liquid in PBS containing 50% glycerol, 0.5% BSA and 0.02% sodium azide.
<b>Source</b>	Polyclonal, Rabbit,IgG
<b>Purification</b>	The antibody was affinity-purified from rabbit antiserum by affinity-chromatography using epitope-specific immunogen.
<b>Dilution</b>	WB: 1/500 - 1/2000. IHC-p: 1:100-300 ELISA: 1/20000.. IF 1:50-200
<b>Concentration</b>	1 mg/ml
<b>Purity</b>	≥90%
<b>Storage Stability</b>	-20°C/1 year
<b>Synonyms</b>	HDC; Histidine decarboxylase; HDC
<b>Observed Band</b>	72kD
<b>Cell Pathway</b>	cytosol,
<b>Tissue Specificity</b>	Leukemia,
<b>Function</b>	catalytic activity:L-histidine = histamine + CO(2).,cofactor:Pyridoxal phosphate.,pathway:Amine and polyamine biosynthesis; histamine biosynthesis; histamine from L-histidine: step 1/1.,similarity:Belongs to the group II decarboxylase family.,subunit:Homodimer.,
<b>Background</b>	This gene encodes a member of the group II decarboxylase family and forms a homodimer that converts L-histidine to histamine in a pyridoxal phosphate dependent manner. Histamine regulates several physiologic processes, including neurotransmission, gastric acid secretion,inflammation, and smooth muscle tone.[provided by RefSeq, Aug 2010],

Nanjing BYabscience technology Co.,Ltd



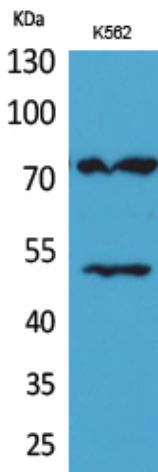
**matters needing attention**

Avoid repeated freezing and thawing!

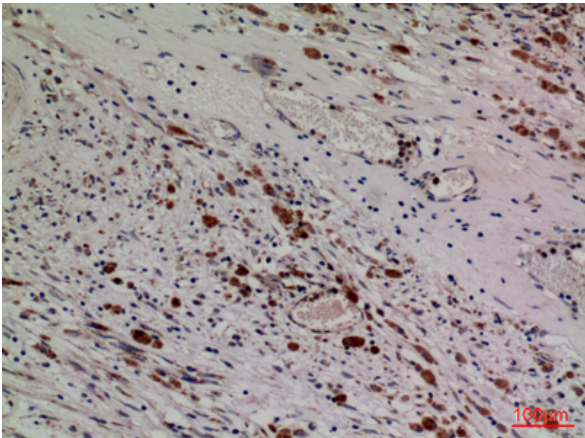
**Usage suggestions**

This product can be used in immunological reaction related experiments. For more information, please consult technical personnel.

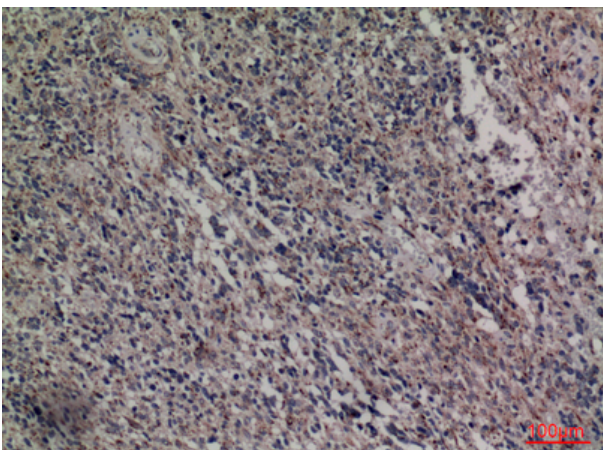
**Products Images**



Western Blot analysis of K562 cells using HDC Polyclonal Antibody. Secondary antibody(catalog#:RS0002) was diluted at 1:20000

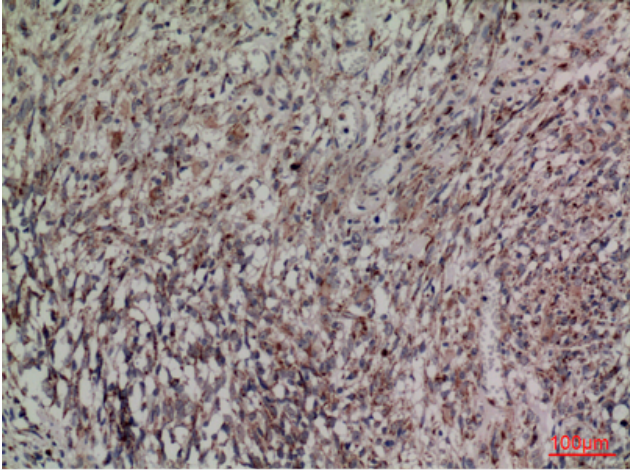


Immunohistochemical analysis of paraffin-embedded human-brain, antibody was diluted at 1:100

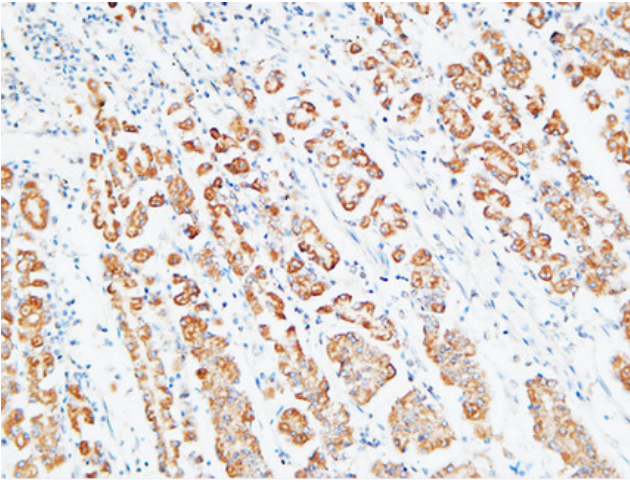


Immunohistochemical analysis of paraffin-embedded human-brain, antibody was diluted at 1:100

**Nanjing BYabscience technology Co.,Ltd**



Immunohistochemical analysis of paraffin-embedded human-brain, antibody was diluted at 1:100



Immunohistochemical analysis of paraffin-embedded Human stomach. 1, Antibody was diluted at 1:200(4° overnight). 2, High-pressure and temperature EDTA, pH8.0 was used for antigen retrieval. 3, Secondary antibody was diluted at 1:200(room temperature, 30min).