



UBE4A Polyclonal Antibody

Catalog No	BYab-02849
Isotype	IgG
Reactivity	Human;Mouse;Rat
Applications	WB;IHC;IF;ELISA
Gene Name	UBE4A
Protein Name	Ubiquitin conjugation factor E4 A
Immunogen	Synthesized peptide derived from the N-terminal region of human UBE4A.
Specificity	UBE4A Polyclonal Antibody detects endogenous levels of UBE4A protein.
Formulation	Liquid in PBS containing 50% glycerol, 0.5% BSA and 0.02% sodium azide.
Source	Polyclonal, Rabbit,IgG
Purification	The antibody was affinity-purified from rabbit antiserum by affinity-chromatography using epitope-specific immunogen.
Dilution	WB: 1/500 - 1/2000. IHC-p: 1:100-300 ELISA: 1/10000.. IF 1:50-200
Concentration	1 mg/ml
Purity	≥90%
Storage Stability	-20°C/1 year
Synonyms	UBE4A; KIAA0126; Ubiquitin conjugation factor E4 A
Observed Band	122kD
Cell Pathway	Cytoplasm .
Tissue Specificity	Bone marrow,Platelet,Skeletal muscle,
Function	function: Binds to the ubiquitin moieties of preformed conjugates and catalyzes ubiquitin chain assembly in conjunction with E1, E2, and E3.,sequence caution: Contaminating sequence. Potential poly-A sequence.,similarity: Belongs to the ubiquitin conjugation factor E4 family.,similarity: Contains 1 U-box domain.,
Background	This gene encodes a member of the U-box ubiquitin ligase family. The encoded protein is involved in multiubiquitin chain assembly and plays a critical role in chromosome condensation and separation through the polyubiquitination of securin. Autoantibodies against the encoded protein may be markers for scleroderma and Crohn's disease. A pseudogene of this gene is located on the long arm of chromosome 3. Alternatively spliced transcript variants encoding multiple isoforms have been observed for this gene. [provided by RefSeq, Feb

Nanjing BYabscience technology Co.,Ltd



2011],

matters needing attention

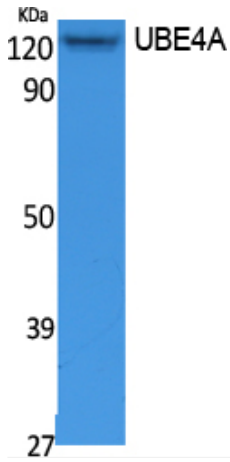
Avoid repeated freezing and thawing!

Usage suggestions

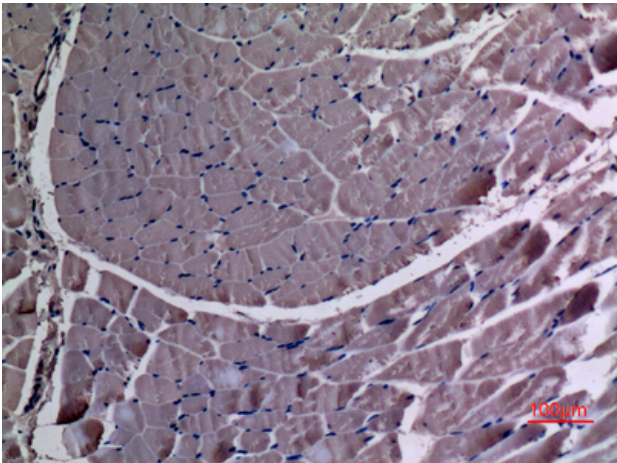
This product can be used in immunological reaction related experiments. For more information, please consult technical personnel.



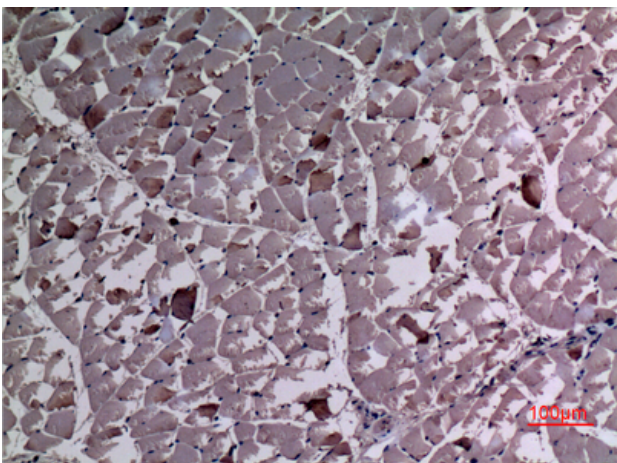
Products Images



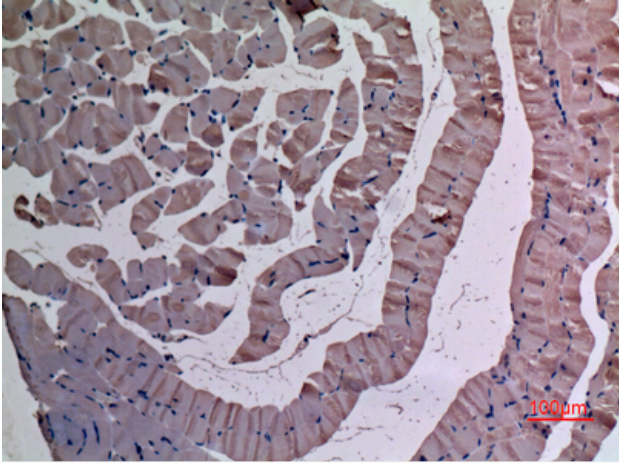
Western Blot analysis of extracts from Jurkat cells, using UBE4A Polyclonal Antibody. Secondary antibody(catalog#:RS0002) was diluted at 1:20000



Immunohistochemical analysis of paraffin-embedded rat-muscle, antibody was diluted at 1:100



Immunohistochemical analysis of paraffin-embedded rat-muscle, antibody was diluted at 1:100



Immunohistochemical analysis of paraffin-embedded mouse-muscle, antibody was diluted at 1:100