



USP30 Polyclonal Antibody

Catalog No	BYab-02832
Isotype	IgG
Reactivity	Human;Mouse;Rat
Applications	WB;ELISA
Gene Name	USP30
Protein Name	Ubiquitin carboxyl-terminal hydrolase 30
Immunogen	The antiserum was produced against synthesized peptide derived from human USP30. AA range:31-80
Specificity	USP30 Polyclonal Antibody detects endogenous levels of USP30 protein.
Formulation	Liquid in PBS containing 50% glycerol, 0.5% BSA and 0.02% sodium azide.
Source	Polyclonal, Rabbit,IgG
Purification	The antibody was affinity-purified from rabbit antiserum by affinity-chromatography using epitope-specific immunogen.
Dilution	Western Blot: 1/500 - 1/2000. ELISA: 1/10000. Not yet tested in other applications.
Concentration	1 mg/ml
Purity	≥90%
Storage Stability	-20°C/1 year
Synonyms	USP30; Ubiquitin carboxyl-terminal hydrolase 30; Deubiquitinating enzyme 30; Ubiquitin thioesterase 30; Ubiquitin-specific-processing protease 30; Ub-specific protease 30
Observed Band	60kd,unspcial bands(65kd,105kd,130kd)in Hela and HCT116 cell.
Cell Pathway	Mitochondrion outer membrane .
Tissue Specificity	Expressed in skeletal muscle, pancreas, liver and kidney.
Function	catalytic activity:Ubiquitin C-terminal thioester + H(2)O = ubiquitin + a thiol.;function:May participate in the maintenance of mitochondrial morphology.;similarity:Belongs to the peptidase C19 family.;tissue specificity:Expressed in skeletal muscle, pancreas, liver and kidney.,
Background	USP30, a member of the ubiquitin-specific protease family (see USP1, MIM 603478), is a novel mitochondrial deubiquitinating (DUB) enzyme (Nakamura and Hirose, 2008 [PubMed 18287522]).[supplied by OMIM, Dec 2008],

Nanjing BYabscience technology Co.,Ltd



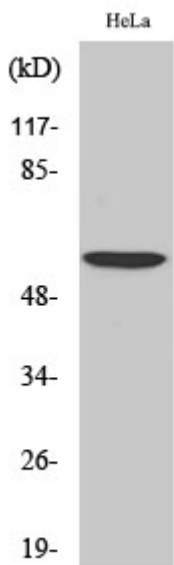
matters needing attention

Avoid repeated freezing and thawing!

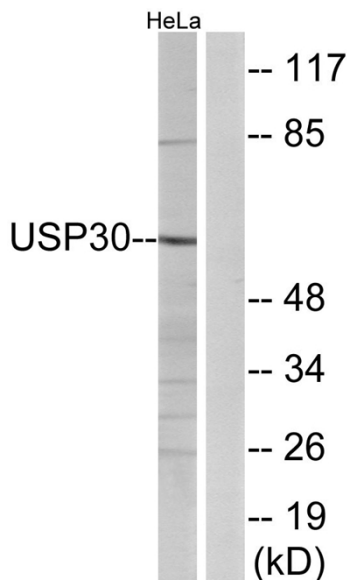
Usage suggestions

This product can be used in immunological reaction related experiments. For more information, please consult technical personnel.

Products Images



Western Blot analysis of various cells using USP30 Polyclonal Antibody. Secondary antibody(catalog#:RS0002) was diluted at 1:20000



Western blot analysis of lysates from HeLa cells, using USP30 Antibody. The lane on the right is blocked with the synthesized peptide.

Nanjing BYabscience technology Co.,Ltd