



# UBTD2 Polyclonal Antibody

<b>Catalog No</b>	BYab-02821
<b>Isotype</b>	IgG
<b>Reactivity</b>	Human;Mouse
<b>Applications</b>	WB;ELISA
<b>Gene Name</b>	UBTD2
<b>Protein Name</b>	Ubiquitin domain-containing protein 2
<b>Immunogen</b>	The antiserum was produced against synthesized peptide derived from human UBTD2. AA range:181-230
<b>Specificity</b>	UBTD2 Polyclonal Antibody detects endogenous levels of UBTD2 protein.
<b>Formulation</b>	Liquid in PBS containing 50% glycerol, 0.5% BSA and 0.02% sodium azide.
<b>Source</b>	Polyclonal, Rabbit,IgG
<b>Purification</b>	The antibody was affinity-purified from rabbit antiserum by affinity-chromatography using epitope-specific immunogen.
<b>Dilution</b>	Western Blot: 1/500 - 1/2000. ELISA: 1/40000. Not yet tested in other applications.
<b>Concentration</b>	1 mg/ml
<b>Purity</b>	≥90%
<b>Storage Stability</b>	-20°C/1 year
<b>Synonyms</b>	UBTD2; DCUBP; SB72; Ubiquitin domain-containing protein 2; Dendritic cell-derived ubiquitin-like protein; DC-UbP; Ubiquitin-like protein SB72
<b>Observed Band</b>	26kD
<b>Cell Pathway</b>	Cytoplasm .
<b>Tissue Specificity</b>	Detected in dendritic cells. Highly expressed in tumor cell lines, but not detectable in most tissues.
<b>Function</b>	similarity:Contains 1 ubiquitin-like domain.,tissue specificity:Detected in dendritic cells. Highly expressed in tumor cell lines, but not detectable in most tissues.,
<b>Background</b>	similarity:Contains 1 ubiquitin-like domain.,tissue specificity:Detected in dendritic cells. Highly expressed in tumor cell lines, but not detectable in most tissues.,
<b>matters needing attention</b>	Avoid repeated freezing and thawing!

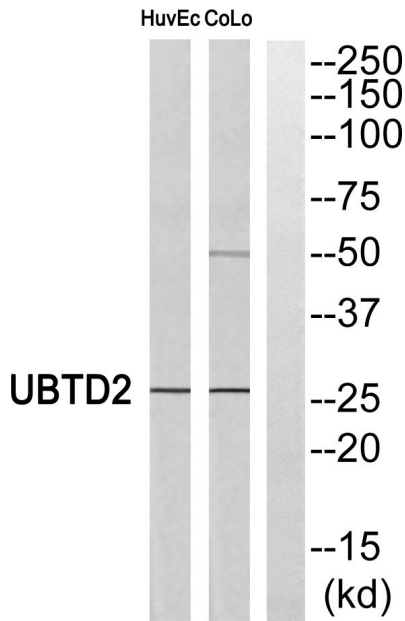
Nanjing BYabscience technology Co.,Ltd



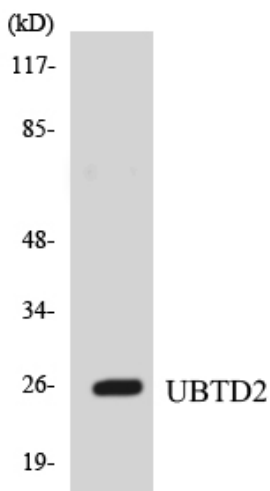
**Usage suggestions**

This product can be used in immunological reaction related experiments. For more information, please consult technical personnel.

**Products Images**



Western blot analysis of UBTD2 Antibody. The lane on the right is blocked with the UBTD2 peptide.



Western blot analysis of the lysates from HUVEC cells using UBTD2 antibody.