



# UBTD1 Polyclonal Antibody

<b>Catalog No</b>	BYab-02820
<b>Isotype</b>	IgG
<b>Reactivity</b>	Human;Mouse;Rat
<b>Applications</b>	IHC;IF;ELISA
<b>Gene Name</b>	UBTD1
<b>Protein Name</b>	Ubiquitin domain-containing protein 1
<b>Immunogen</b>	The antiserum was produced against synthesized peptide derived from human UBTD1. AA range:151-200
<b>Specificity</b>	UBTD1 Polyclonal Antibody detects endogenous levels of UBTD1 protein.
<b>Formulation</b>	Liquid in PBS containing 50% glycerol, 0.5% BSA and 0.02% sodium azide.
<b>Source</b>	Polyclonal, Rabbit,IgG
<b>Purification</b>	The antibody was affinity-purified from rabbit antiserum by affinity-chromatography using epitope-specific immunogen.
<b>Dilution</b>	IHC: 1/100 - 1/300. ELISA: 1/20000.. IF 1:50-200
<b>Concentration</b>	1 mg/ml
<b>Purity</b>	≥90%
<b>Storage Stability</b>	-20°C/1 year
<b>Synonyms</b>	UBTD1; Ubiquitin domain-containing protein 1
<b>Observed Band</b>	26kD
<b>Cell Pathway</b>	
<b>Tissue Specificity</b>	Coronary artery,Embryo,Placenta,
<b>Function</b>	similarity:Contains 1 ubiquitin-like domain.,
<b>Background</b>	The degradation of many proteins is carried out by the ubiquitin pathway in which proteins are targeted for degradation by covalent conjugation of the polypeptide ubiquitin. This gene encodes a protein that belongs to the ubiquitin family of proteins. The encoded protein is thought to regulate E2 ubiquitin conjugating enzymes belonging to the UBE2D family. [provided by RefSeq, Mar 2014],
<b>matters needing attention</b>	Avoid repeated freezing and thawing!

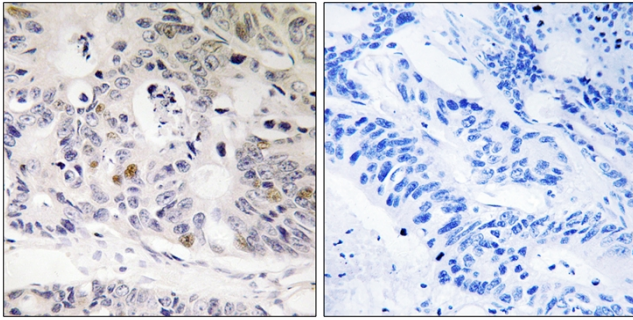
Nanjing BYabscience technology Co.,Ltd



### Usage suggestions

This product can be used in immunological reaction related experiments. For more information, please consult technical personnel.

## Products Images



Immunohistochemistry analysis of paraffin-embedded human colon carcinoma tissue, using UBTD1 Antibody. The picture on the right is blocked with the synthesized peptide.