



UBPH Polyclonal Antibody

Catalog No	BYab-02818
Isotype	IgG
Reactivity	Human;Mouse;Rat
Applications	WB;ELISA
Gene Name	UBFD1
Protein Name	Ubiquitin domain-containing protein UBFD1
Immunogen	The antiserum was produced against synthesized peptide derived from human UBFD1. AA range:135-184
Specificity	UBPH Polyclonal Antibody detects endogenous levels of UBPH protein.
Formulation	Liquid in PBS containing 50% glycerol, 0.5% BSA and 0.02% sodium azide.
Source	Polyclonal, Rabbit,IgG
Purification	The antibody was affinity-purified from rabbit antiserum by affinity-chromatography using epitope-specific immunogen.
Dilution	Western Blot: 1/500 - 1/2000. ELISA: 1/10000. Not yet tested in other applications.
Concentration	1 mg/ml
Purity	≥90%
Storage Stability	-20°C/1 year
Synonyms	UBFD1; UBPH; Ubiquitin domain-containing protein UBFD1; Ubiquitin-binding protein homolog
Observed Band	50kD
Cell Pathway	cell-cell adherens junction,
Tissue Specificity	Skeletal muscle,
Function	
Background	UBFD1 (Ubiquitin Family Domain Containing 1) is a Protein Coding gene. GO annotations related to this gene include poly (A) RNA binding.
matters needing attention	Avoid repeated freezing and thawing!

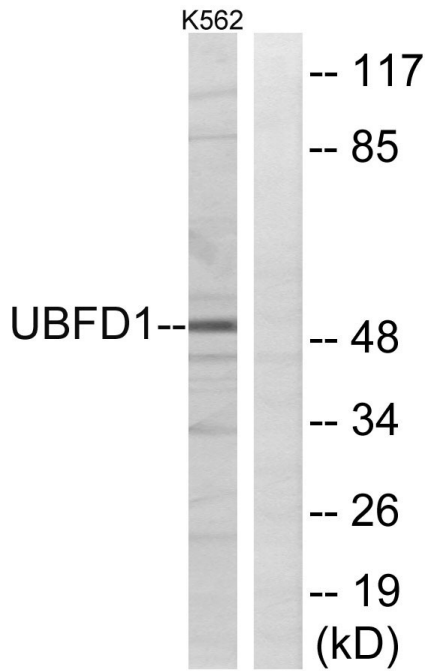
Nanjing BYabscience technology Co.,Ltd



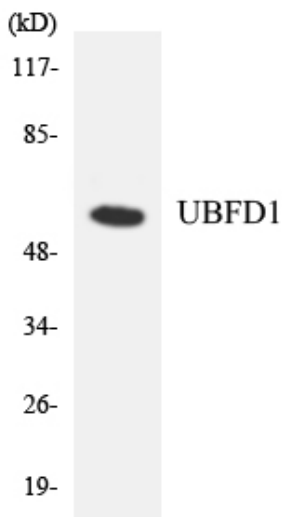
Usage suggestions

This product can be used in immunological reaction related experiments. For more information, please consult technical personnel.

Products Images



Western blot analysis of lysates from K562 cells, using UBFD1 Antibody. The lane on the right is blocked with the synthesized peptide.



Western blot analysis of the lysates from COLO205 cells using UBFD1 antibody.