



SEN3 Polyclonal Antibody

Catalog No	BYab-02780
Isotype	IgG
Reactivity	Human;Mouse
Applications	WB;IHC;IF;ELISA
Gene Name	SEN3
Protein Name	Sentrin-specific protease 3
Immunogen	The antiserum was produced against synthesized peptide derived from human SEN3. AA range:10-59
Specificity	SEN3 Polyclonal Antibody detects endogenous levels of SEN3 protein.
Formulation	Liquid in PBS containing 50% glycerol, 0.5% BSA and 0.02% sodium azide.
Source	Polyclonal, Rabbit,IgG
Purification	The antibody was affinity-purified from rabbit antiserum by affinity-chromatography using epitope-specific immunogen.
Dilution	WB: 1/500 - 1/2000. IHC: 1/100 - 1/300. ELISA: 1/5000.. IF 1:50-200
Concentration	1 mg/ml
Purity	≥90%
Storage Stability	-20°C/1 year
Synonyms	SEN3; SSP3; SUSP3; Sentrin-specific protease 3; SUMO-1-specific protease 3; Sentrin/SUMO-specific protease SEN3
Observed Band	80kD
Cell Pathway	Nucleus, nucleolus . Nucleus, nucleoplasm . Cytoplasm . Redistributes between the nucleolus and the nucleoplasm in response to mild oxidative stress (PubMed:19680224). Mainly found in the nucleoplasm, with low levels detected in the cytoplasmic and chromatin fractions (By similarity). .
Tissue Specificity	Epithelium,Lymph,Melanoma,Uterus,
Function	function:Protease that releases SUMO2 and SUMO3 monomers from sumoylated substrates, but has only weak activity against SUMO1 conjugates. Deconjugates SUMO2 from MEF2D, which increases its transcriptional activation capability.,similarity:Belongs to the peptidase C48 family.,subunit:Binds to UBL1 and SMT3H1.,
Background	The reversible posttranslational modification of proteins by the addition of small ubiquitin-like SUMO proteins (see SUMO1; MIM 601912) is required for numerous

Nanjing BYabscience technology Co.,Ltd



biologic processes. SUMO-specific proteases, such as SENP3, are responsible for the initial processing of SUMO precursors to generate a C-terminal diglycine motif required for the conjugation reaction. They also have isopeptidase activity for the removal of SUMO from high molecular mass SUMO conjugates (Di Bacco et al., 2006 [PubMed 16738315]).[supplied by OMIM, Jun 2009],

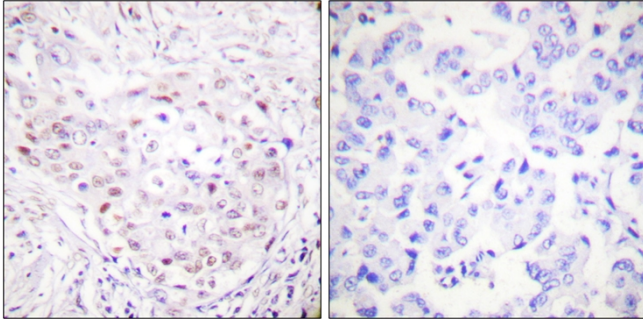
matters needing attention

Avoid repeated freezing and thawing!

Usage suggestions

This product can be used in immunological reaction related experiments. For more information, please consult technical personnel.

Products Images



Immunohistochemistry analysis of paraffin-embedded human breast carcinoma tissue, using SENP3 Antibody. The picture on the right is blocked with the synthesized peptide.