



SENP2 Polyclonal Antibody

Catalog No	BYab-02779
Isotype	IgG
Reactivity	Human;Mouse;Rat
Applications	WB;IHC;IF;ELISA
Gene Name	SENP2
Protein Name	Sentrin-specific protease 2
Immunogen	The antiserum was produced against synthesized peptide derived from human SENP2. AA range:481-530
Specificity	SENP2 Polyclonal Antibody detects endogenous levels of SENP2 protein.
Formulation	Liquid in PBS containing 50% glycerol, 0.5% BSA and 0.02% sodium azide.
Source	Polyclonal, Rabbit,IgG
Purification	The antibody was affinity-purified from rabbit antiserum by affinity-chromatography using epitope-specific immunogen.
Dilution	WB: 1/500 - 1/2000. IHC: 1/100 - 1/300. ELISA: 1/20000.. IF 1:50-200
Concentration	1 mg/ml
Purity	≥90%
Storage Stability	-20°C/1 year
Synonyms	SENP2; KIAA1331; Sentrin-specific protease 2; Axam2; SMT3-specific isopeptidase 2; Smt3ip2; Sentrin/SUMO-specific protease SENP2
Observed Band	68kD
Cell Pathway	Nucleus, nuclear pore complex . Nucleus membrane ; Peripheral membrane protein ; Nucleoplasmic side . Cytoplasm . Shuttles between cytoplasm and nucleus. .
Tissue Specificity	Brain,Fetal brain,Melanoma,Teratocarcinoma,
Function	domain:The N-terminus is necessary and sufficient for nuclear envelope targeting.,function:Protease that catalyzes two essential functions in the SUMO pathway: processing of full-length SUMO1, SUMO2 and SUMO3 to their mature forms and deconjugation of SUMO1, SUMO2 and SUMO3 from targeted proteins. May down-regulate CTNNB1 levels and thereby modulate the Wnt pathway.,PTM:Polyubiquitinated; which leads to proteasomal degradation.,similarity:Belongs to the peptidase C48 family.,subcellular location:Shuttles between cytoplasm and nucleus.,subunit:Binds to SUMO2 and SUMO3 (By similarity). Interacts with the C-terminal domain of NUP153 via its

Nanjing BYabscience technology Co.,Ltd



N-terminus.,

Background

SUMO1 (UBL1; MIM 601912) is a small ubiquitin-like protein that can be covalently conjugated to other proteins. SENP2 is one of a group of enzymes that process newly synthesized SUMO1 into the conjugatable form and catalyze the deconjugation of SUMO1-containing species.[supplied by OMIM, Apr 2004],

matters needing attention

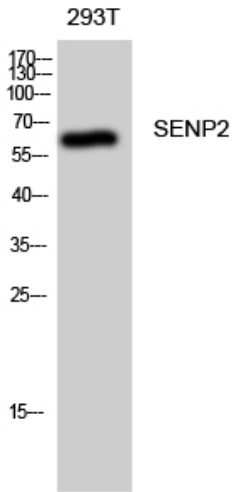
Avoid repeated freezing and thawing!

Usage suggestions

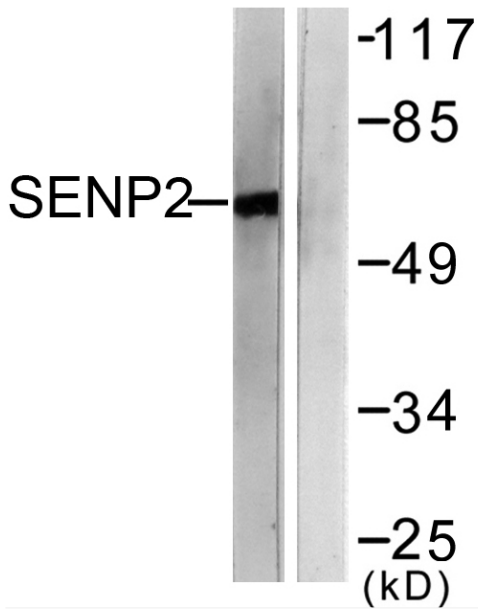
This product can be used in immunological reaction related experiments. For more information, please consult technical personnel.



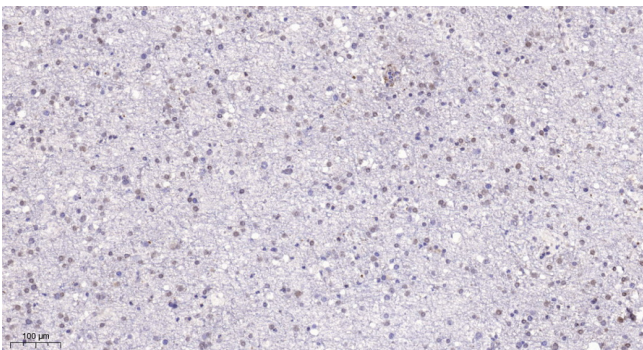
Products Images



Western Blot analysis of 293T cells using SENP2 Polyclonal Antibody diluted at 1:1000



Western blot analysis of lysates from MDA-MB-435 cells, using SENP2 Antibody. The lane on the right is blocked with the synthesized peptide.



Immunohistochemical analysis of paraffin-embedded human brain. 1, Tris-EDTA, pH9.0 was used for antigen retrieval. 2 Antibody was diluted at 1:200(4° overnight). 3, Secondary antibody was diluted at 1:200(room temperature, 45min).

Nanjing BYabscience technology Co.,Ltd