



PLC β 2 Polyclonal Antibody

Catalog No	BYab-02760
Isotype	IgG
Reactivity	Human;Mouse;Rat
Applications	WB;IHC
Gene Name	PLCB2
Protein Name	1-phosphatidylinositol 4,5-bisphosphate phosphodiesterase beta-2
Immunogen	Synthesized peptide derived from the Internal region of human PLC β 2.
Specificity	PLC β 2 Polyclonal Antibody detects endogenous levels of PLC β 2 protein.
Formulation	Liquid in PBS containing 50% glycerol, 0.5% BSA and 0.02% sodium azide.
Source	Polyclonal, Rabbit,IgG
Purification	The antibody was affinity-purified from rabbit antiserum by affinity-chromatography using epitope-specific immunogen.
Dilution	WB 1:500-2000;IHC-p 1:50-300
Concentration	1 mg/ml
Purity	\geq 90%
Storage Stability	-20°C/1 year
Synonyms	PLCB2; 1-phosphatidylinositol 4; 5-bisphosphate phosphodiesterase beta-2; Phosphoinositide phospholipase C-beta-2; Phospholipase C-beta-2; PLC-beta-2
Observed Band	150kD
Cell Pathway	intracellular,cytosol,
Tissue Specificity	Placenta,Spleen,Thymus,
Function	catalytic activity:1-phosphatidyl-1D-myo-inositol 4,5-bisphosphate + H(2)O = 1D-myo-inositol 1,4,5-trisphosphate + diacylglycerol.,cofactor:Binds 1 calcium ion per subunit.,function:The production of the second messenger molecules diacylglycerol (DAG) and inositol 1,4,5-trisphosphate (IP3) is mediated by activated phosphatidylinositol-specific phospholipase C enzymes.,miscellaneous:The receptor-mediated activation of PLC-beta-2 is most effectively mediated by one G-protein alpha subunit, alpha-16.,similarity:Contains 1 C2 domain.,similarity:Contains 1 PI-PLC X-box domain.,similarity:Contains 1 PI-PLC Y-box domain.,subunit:Interacts with RAC1.,

Nanjing BYabscience technology Co.,Ltd



Background

catalytic activity:1-phosphatidyl-1D-myo-inositol 4,5-bisphosphate + H(2)O = 1D-myo-inositol 1,4,5-trisphosphate + diacylglycerol.,cofactor: Binds 1 calcium ion per subunit.,function:The production of the second messenger molecules diacylglycerol (DAG) and inositol 1,4,5-trisphosphate (IP3) is mediated by activated phosphatidylinositol-specific phospholipase C enzymes.,miscellaneous:The receptor-mediated activation of PLC-beta-2 is most effectively mediated by one G-protein alpha subunit, alpha-16.,similarity:Contains 1 C2 domain.,similarity:Contains 1 PI-PLC X-box domain.,similarity:Contains 1 PI-PLC Y-box domain.,subunit:Interacts with RAC1.,

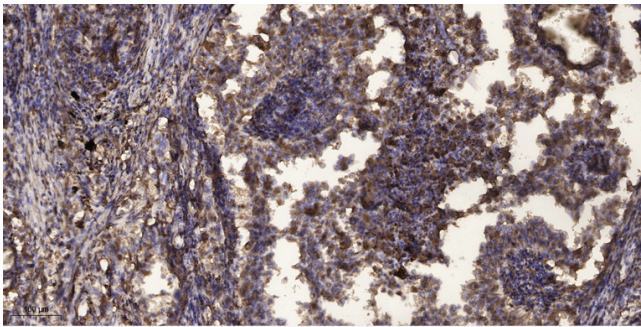
matters needing attention

Avoid repeated freezing and thawing!

Usage suggestions

This product can be used in immunological reaction related experiments. For more information, please consult technical personnel.

Products Images



Immunohistochemical analysis of paraffin-embedded human Squamous cell carcinoma of lung. 1, Antibody was diluted at 1:200(4° overnight). 2, Tris-EDTA,pH9.0 was used for antigen retrieval. 3,Secondary antibody was diluted at 1:200(room temperature, 45min).