



# PIPOX Polyclonal Antibody

<b>Catalog No</b>	BYab-02756
<b>Isotype</b>	IgG
<b>Reactivity</b>	Human;Rat;Mouse;
<b>Applications</b>	WB;ELISA;IHC
<b>Gene Name</b>	PIPOX
<b>Protein Name</b>	Peroxisomal sarcosine oxidase
<b>Immunogen</b>	The antiserum was produced against synthesized peptide derived from human PIPOX. AA range:257-306
<b>Specificity</b>	PIPOX Polyclonal Antibody detects endogenous levels of PIPOX protein.
<b>Formulation</b>	Liquid in PBS containing 50% glycerol, 0.5% BSA and 0.02% sodium azide.
<b>Source</b>	Polyclonal, Rabbit,IgG
<b>Purification</b>	The antibody was affinity-purified from rabbit antiserum by affinity-chromatography using epitope-specific immunogen.
<b>Dilution</b>	WB 1:500-2000;IHC-p 1:50-300; ELISA 2000-20000
<b>Concentration</b>	1 mg/ml
<b>Purity</b>	≥90%
<b>Storage Stability</b>	-20°C/1 year
<b>Synonyms</b>	PIPOX; LPIPOX; PSO; Peroxisomal sarcosine oxidase; PSO; L-pipecolate oxidase; L-pipecolic acid oxidase
<b>Observed Band</b>	44kD
<b>Cell Pathway</b>	Peroxisome .
<b>Tissue Specificity</b>	Expressed in the liver and kidney.
<b>Function</b>	catalytic activity:L-pipecolate + O(2) = 2,3,4,5-tetrahydropyridine-2-carboxylate + H(2)O(2).,catalytic activity:Sarcosine + H(2)O + O(2) = glycine + formaldehyde + H(2)O(2).,cofactor: Binds 1 FAD per subunit.,function:Metabolizes sarcosine, L-pipecolic acid and L-proline.,similarity:Belongs to the MSOX/MTOX family.,subunit:Monomer.,
<b>Background</b>	catalytic activity:L-pipecolate + O(2) = 2,3,4,5-tetrahydropyridine-2-carboxylate + H(2)O(2).,catalytic activity:Sarcosine + H(2)O + O(2) = glycine + formaldehyde + H(2)O(2).,cofactor: Binds 1 FAD per subunit.,function:Metabolizes sarcosine, L-pipecolic acid and L-proline.,similarity:Belongs to the MSOX/MTOX family.,subunit:Monomer.,

Nanjing BYabscience technology Co.,Ltd



**matters needing attention**

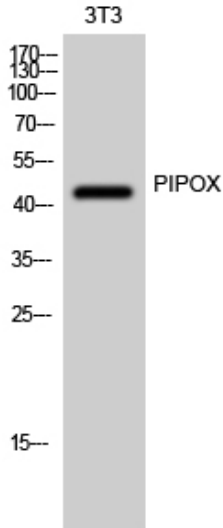
Avoid repeated freezing and thawing!

**Usage suggestions**

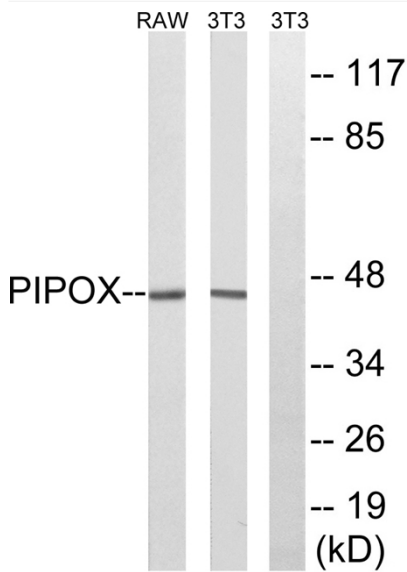
This product can be used in immunological reaction related experiments. For more information, please consult technical personnel.



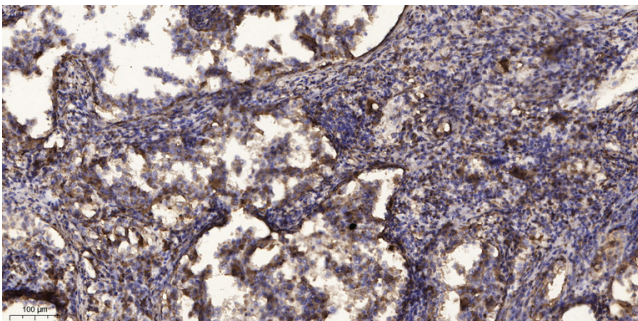
## Products Images



Western Blot analysis of 3T3 cells using PIPOX Polyclonal Antibody



Western blot analysis of lysates from NIH/3T3 and RAW264.7 cells, using PIPOX Antibody. The lane on the right is blocked with the synthesized peptide.



Immunohistochemical analysis of paraffin-embedded human Squamous cell carcinoma of lung. 1, Antibody was diluted at 1:200(4° overnight). 2, Tris-EDTA,pH9.0 was used for antigen retrieval. 3,Secondary antibody was diluted at 1:200(room temperature, 45min).