



PIG-X Polyclonal Antibody

Catalog No	BYab-02754
Isotype	IgG
Reactivity	Human;Rat;Mouse;
Applications	WB;IHC;IF;ELISA
Gene Name	PIGX
Protein Name	Phosphatidylinositol-glycan biosynthesis class X protein
Immunogen	The antiserum was produced against synthesized peptide derived from human PIGX. AA range:183-232
Specificity	PIG-X Polyclonal Antibody detects endogenous levels of PIG-X protein.
Formulation	Liquid in PBS containing 50% glycerol, 0.5% BSA and 0.02% sodium azide.
Source	Polyclonal, Rabbit,IgG
Purification	The antibody was affinity-purified from rabbit antiserum by affinity-chromatography using epitope-specific immunogen.
Dilution	WB: 1/500 - 1/2000. IHC: 1/100 - 1/300. ELISA: 1/40000.. IF 1:50-200
Concentration	1 mg/ml
Purity	≥90%
Storage Stability	-20°C/1 year
Synonyms	PIGX; Phosphatidylinositol-glycan biosynthesis class X protein; PIG-X
Observed Band	26kD
Cell Pathway	Endoplasmic reticulum membrane ; Single-pass type I membrane protein .
Tissue Specificity	Brain,
Function	function:Essential component of glycosylphosphatidylinositol-mannosyltransferase 1 which transfers the first of the 4 mannoses in the GPI-anchor precursors during GPI-anchor biosynthesis. Probably acts by stabilizing the mannosyltransferase PIGM.,pathway:Glycolipid biosynthesis; glycosylphosphatidylinositol-anchor biosynthesis.,PTM:N-glycosylated.,sequence caution:Unusual initiator. The initiator methionine is coded by a non-canonical CTG leucine codon.,similarity:Belongs to the PIGX family.,subunit:Interacts with PIGM.,
Background	This gene encodes a type I transmembrane protein in the endoplasmic reticulum (ER). The protein is an essential component of

Nanjing BYabscience technology Co.,Ltd



glycosylphosphatidylinositol-mannosyltransferase I, which transfers the first of the four mannoses in the GPI-anchor precursors during GPI-anchor biosynthesis. Studies in rat indicate that the protein is translated from a non-AUG translation initiation site. Alternative splicing results in multiple transcript variants. [provided by RefSeq, Oct 2009],

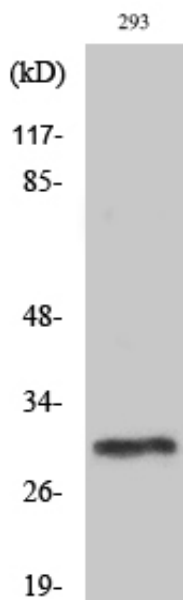
matters needing attention

Avoid repeated freezing and thawing!

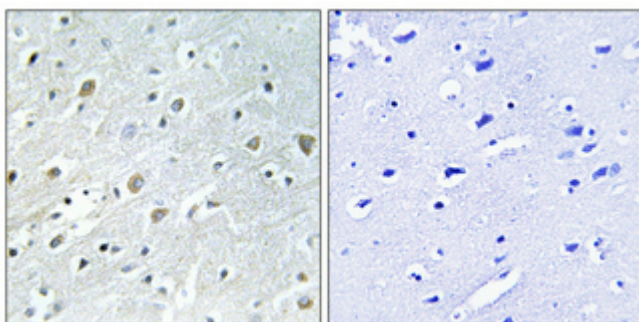
Usage suggestions

This product can be used in immunological reaction related experiments. For more information, please consult technical personnel.

Products Images

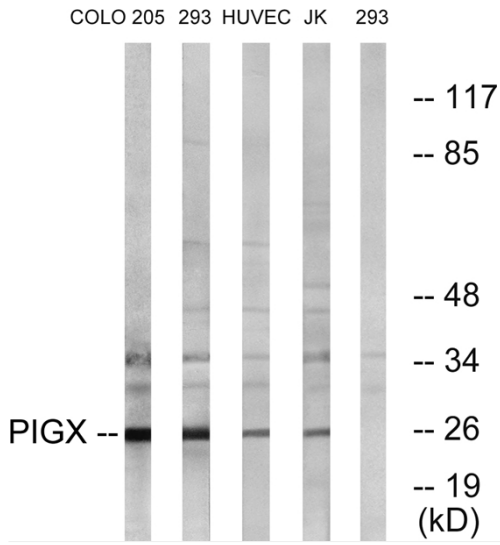


Western Blot analysis of various cells using PIG-X Polyclonal Antibody diluted at 1:1000



Immunohistochemical analysis of paraffin-embedded Human brain. Antibody was diluted at 1:100(4° overnight). High-pressure and temperature Tris-EDTA,pH8.0 was used for antigen retrieval. Negative contrl (right) obtained from antibody was pre-absorbed by immunogen peptide.

Nanjing BYabscience technology Co.,Ltd



Western blot analysis of lysates from 293, COLO, HUVEC, and Jurkat cells, using PIGX Antibody. The lane on the right is blocked with the synthesized peptide.