



PIG-H Polyclonal Antibody

Catalog No	BYab-02753
Isotype	IgG
Reactivity	Human;Mouse
Applications	IHC;IF;ELISA
Gene Name	PIGH
Protein Name	Phosphatidylinositol N-acetylglucosaminyltransferase subunit H
Immunogen	The antiserum was produced against synthesized peptide derived from human PIGH. AA range:137-186
Specificity	PIG-H Polyclonal Antibody detects endogenous levels of PIG-H protein.
Formulation	Liquid in PBS containing 50% glycerol, 0.5% BSA and 0.02% sodium azide.
Source	Polyclonal, Rabbit,IgG
Purification	The antibody was affinity-purified from rabbit antiserum by affinity-chromatography using epitope-specific immunogen.
Dilution	IHC: 1/100 - 1/300. ELISA: 1/40000.. IF 1:50-200
Concentration	1 mg/ml
Purity	≥90%
Storage Stability	-20°C/1 year
Synonyms	PIGH; Phosphatidylinositol N-acetylglucosaminyltransferase subunit H; Phosphatidylinositol-glycan biosynthesis class H protein; PIG-H
Observed Band	
Cell Pathway	Cytoplasm.
Tissue Specificity	Blood,Lung,Placenta,
Function	catalytic activity:UDP-N-acetyl-D-glucosamine + 1-phosphatidyl-1D-myo-inositol = UDP + 6-(N-acetyl-alpha-D-glucosaminyl)-1-phosphatidyl-1D-myo-inositol.,function:Part of the complex catalyzing the transfer of N-acetylglucosamine from UDP-N-acetylglucosamine to phosphatidylinositol, the first step of GPI biosynthesis.,online information:Phosphatidylinositol N-acetylglucosaminyltransferase subunit H,pathway:Glycolipid biosynthesis; glycosylphosphatidylinositol-anchor biosynthesis.,similarity:Belongs to the PIGH family.,subunit:Associates with PIGA, PIGC, PIGP, PIGQ and DPM2. The latter is not essential for activity.,

Nanjing BYabscience technology Co.,Ltd



Background

This gene encodes an endoplasmic reticulum associated protein that is involved in glycosylphosphatidylinositol (GPI)-anchor biosynthesis. The GPI anchor is a glycolipid found on many blood cells and which serves to anchor proteins to the cell surface. The protein encoded by this gene is a subunit of the GPI N-acetylglucosaminyl (GlcNAc) transferase that transfers GlcNAc to phosphatidylinositol (PI) on the cytoplasmic side of the endoplasmic reticulum. [provided by RefSeq, Jul 2008],

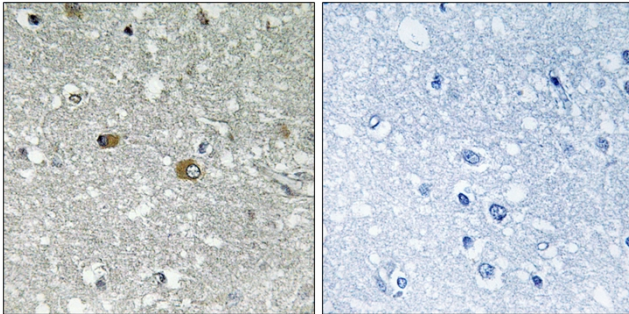
matters needing attention

Avoid repeated freezing and thawing!

Usage suggestions

This product can be used in immunological reaction related experiments. For more information, please consult technical personnel.

Products Images



Immunohistochemistry analysis of paraffin-embedded human brain tissue, using PIGH Antibody. The picture on the right is blocked with the synthesized peptide.