



PGLS Polyclonal Antibody

Catalog No	BYab-02751
Isotype	IgG
Reactivity	Human;Rat;Mouse;
Applications	WB;IHC;IF;ELISA
Gene Name	PGLS
Protein Name	6-phosphogluconolactonase
Immunogen	The antiserum was produced against synthesized peptide derived from human PGLS. AA range:191-240
Specificity	PGLS Polyclonal Antibody detects endogenous levels of PGLS protein.
Formulation	Liquid in PBS containing 50% glycerol, 0.5% BSA and 0.02% sodium azide.
Source	Polyclonal, Rabbit,IgG
Purification	The antibody was affinity-purified from rabbit antiserum by affinity-chromatography using epitope-specific immunogen.
Dilution	WB: 1/500 - 1/2000. IHC: 1/100 - 1/300. ELISA: 1/40000.. IF 1:50-200
Concentration	1 mg/ml
Purity	≥90%
Storage Stability	-20°C/1 year
Synonyms	PGLS; 6-phosphogluconolactonase; 6PGL
Observed Band	30kD
Cell Pathway	Cytoplasm .
Tissue Specificity	Brain,Cajal-Retzius cell,Fetal brain cortex,Uterus,
Function	catalytic activity:6-phospho-D-glucono-1,5-lactone + H(2)O = 6-phospho-D-gluconate.,function:Hydrolysis of 6-phosphogluconolactone to 6-phosphogluconate.,pathway:Carbohydrate degradation; pentose phosphate pathway; D-ribulose 5-phosphate from D-glucose 6-phosphate (oxidative stage): step 2/3.,similarity:Belongs to the glucosamine/galactosamine-6-phosphate isomerase family. 6-phosphogluconolactonase subfamily.,
Background	catalytic activity:6-phospho-D-glucono-1,5-lactone + H(2)O = 6-phospho-D-gluconate.,function:Hydrolysis of 6-phosphogluconolactone to 6-phosphogluconate.,pathway:Carbohydrate degradation; pentose phosphate pathway; D-ribulose 5-phosphate from D-glucose 6-phosphate (oxidative stage):

Nanjing BYabscience technology Co.,Ltd



step 2/3.,similarity:Belongs to the glucosamine/galactosamine-6-phosphate isomerase family. 6-phosphogluconolactonase subfamily.,

matters needing attention

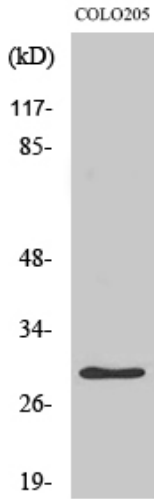
Avoid repeated freezing and thawing!

Usage suggestions

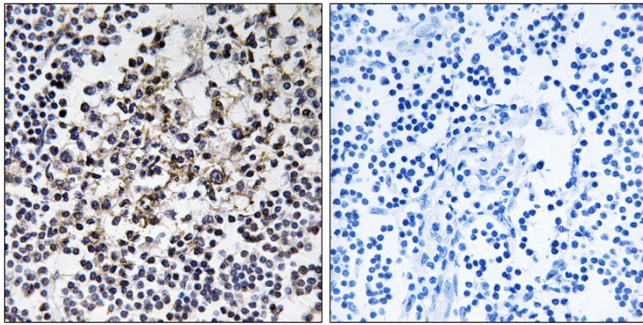
This product can be used in immunological reaction related experiments. For more information, please consult technical personnel.



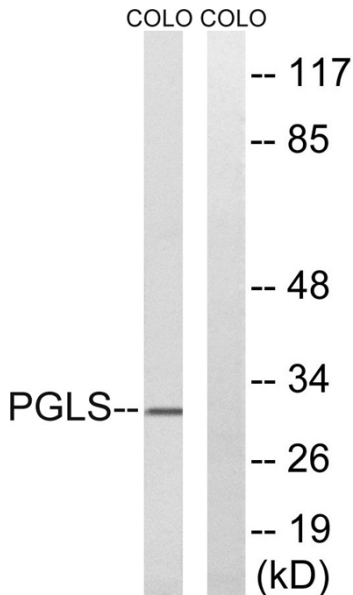
Products Images



Western Blot analysis of various cells using PGLS Polyclonal Antibody



Immunohistochemistry analysis of paraffin-embedded human lymph node tissue, using PGLS Antibody. The picture on the right is blocked with the synthesized peptide.



Western blot analysis of lysates from COLO cells, using PGLS Antibody. The lane on the right is blocked with the synthesized peptide.

Nanjing BYabscience technology Co.,Ltd