



PGI2 synthase Polyclonal Antibody

Catalog No	BYab-02750
Isotype	IgG
Reactivity	Human;Mouse;Rat
Applications	WB;ELISA;IHC
Gene Name	PTGIS
Protein Name	Prostacyclin synthase
Immunogen	Synthesized peptide derived from the C-terminal region of human PGI2 synthase.
Specificity	PGI2 synthase Polyclonal Antibody detects endogenous levels of PGI2 synthase protein.
Formulation	Liquid in PBS containing 50% glycerol, 0.5% BSA and 0.02% sodium azide.
Source	Polyclonal, Rabbit,IgG
Purification	The antibody was affinity-purified from rabbit antiserum by affinity-chromatography using epitope-specific immunogen.
Dilution	WB 1:500-2000;IHC-p 1:50-300; ELISA 2000-20000
Concentration	1 mg/ml
Purity	≥90%
Storage Stability	-20°C/1 year
Synonyms	PTGIS; CYP8; CYP8A1; Prostacyclin synthase; Prostaglandin I2 synthase
Observed Band	57kD
Cell Pathway	Endoplasmic reticulum membrane ; Single-pass membrane protein .
Tissue Specificity	Widely expressed; particularly abundant in ovary, heart, skeletal muscle, lung and prostate.
Function	catalytic activity:(5Z,13E)-(15S)-9-alpha,11-alpha-epidioxy-15-hydroxyprosta-5,13-dienoate = (5Z,13E)-(15S)-6,9-alpha-epoxy-11-alpha,15-dihydroxyprosta-5,13-dienoate., cofactor:Heme group.,function:Catalyzes the isomerization of prostaglandin H2 to prostacyclin (= prostaglandin I2).,online information:CYP8A1 alleles,similarity:Belongs to the cytochrome P450 family.,tissue specificity:Widely expressed; particularly abundant in ovary, heart, skeletal muscle, lung and prostate.,
Background	This gene encodes a member of the cytochrome P450 superfamily of enzymes. The cytochrome P450 proteins are monooxygenases which catalyze many

Nanjing BYabscience technology Co.,Ltd



reactions involved in drug metabolism and synthesis of cholesterol, steroids and other lipids. However, this protein is considered a member of the cytochrome P450 superfamily on the basis of sequence similarity rather than functional similarity. This endoplasmic reticulum membrane protein catalyzes the conversion of prostglandin H2 to prostacyclin (prostaglandin I2), a potent vasodilator and inhibitor of platelet aggregation. An imbalance of prostacyclin and its physiological antagonist thromboxane A2 contribute to the development of myocardial infarction, stroke, and atherosclerosis. [provided by RefSeq, Jul 2008],

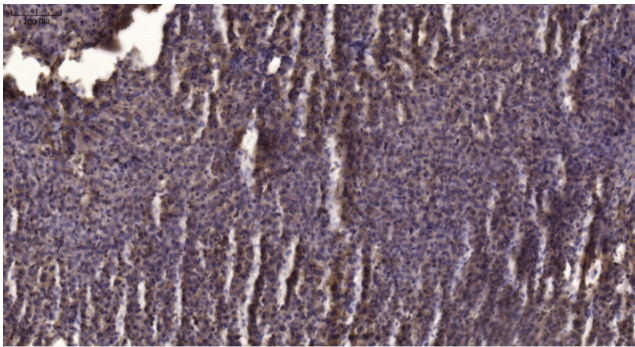
matters needing attention

Avoid repeated freezing and thawing!

Usage suggestions

This product can be used in immunological reaction related experiments. For more information, please consult technical personnel.

Products Images



Immunohistochemical analysis of paraffin-embedded human liver cancer. 1, Antibody was diluted at 1:200(4° overnight). 2, Tris-EDTA,pH9.0 was used for antigen retrieval. 3,Secondary antibody was diluted at 1:200(room temperature, 45min).