



# PGE synthase Polyclonal Antibody

<b>Catalog No</b>	BYab-02749
<b>Isotype</b>	IgG
<b>Reactivity</b>	Human;Mouse;Rat
<b>Applications</b>	WB;ELISA;IHC
<b>Gene Name</b>	PTGES
<b>Protein Name</b>	Prostaglandin E synthase
<b>Immunogen</b>	The antiserum was produced against synthesized peptide derived from human PGE synthase. AA range:30-79
<b>Specificity</b>	PGE synthase Polyclonal Antibody detects endogenous levels of PGE synthase protein.
<b>Formulation</b>	Liquid in PBS containing 50% glycerol, 0.5% BSA and 0.02% sodium azide.
<b>Source</b>	Polyclonal, Rabbit,IgG
<b>Purification</b>	The antibody was affinity-purified from rabbit antiserum by affinity-chromatography using epitope-specific immunogen.
<b>Dilution</b>	WB 1:500-2000;IHC-p 1:50-300; ELISA 2000-20000
<b>Concentration</b>	1 mg/ml
<b>Purity</b>	≥90%
<b>Storage Stability</b>	-20°C/1 year
<b>Synonyms</b>	PTGES; MGST1L1; MPGES1; PGES; PIG12; Prostaglandin E synthase; Microsomal glutathione S-transferase 1-like 1; MGST1-L1; Microsomal prostaglandin E synthase 1; MPGES-1; p53-induced gene 12 protein
<b>Observed Band</b>	17kD
<b>Cell Pathway</b>	Membrane ; Multi-pass membrane protein . Cytoplasm, perinuclear region . Colocalizes with PTGS1/COX-1 and PTGS2/COX-2 in the perinuclear compartment. .
<b>Tissue Specificity</b>	Breast,Colon cancer,Pancreas,
<b>Function</b>	catalytic activity:(5Z,13E)-(15S)-9-alpha,11-alpha-epidioxy-15-hydroxyprosta-5,13-dienoate = (5Z,13E)-(15S)-11-alpha,15-dihydroxy-9-oxoprosta-5,13-dienoate.,induction:By TP53/p53.,similarity:Belongs to the MAPEG family.,subunit:Homotrimer.,
<b>Background</b>	prostaglandin E synthase(PTGES) Homo sapiens The protein encoded by this gene is a glutathione-dependent prostaglandin E synthase. The expression of this

Nanjing BYabscience technology Co.,Ltd



gene has been shown to be induced by proinflammatory cytokine interleukin 1 beta (IL1B). Its expression can also be induced by tumor suppressor protein TP53, and may be involved in TP53 induced apoptosis. Knockout studies in mice suggest that this gene may contribute to the pathogenesis of collagen-induced arthritis and mediate acute pain during inflammatory responses. [provided by RefSeq, Jul 2008],

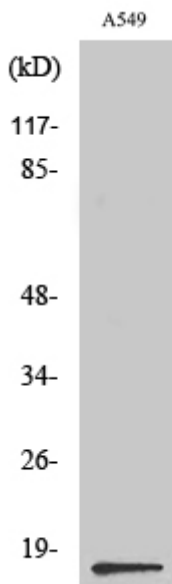
**matters needing attention**

Avoid repeated freezing and thawing!

**Usage suggestions**

This product can be used in immunological reaction related experiments. For more information, please consult technical personnel.

## Products Images

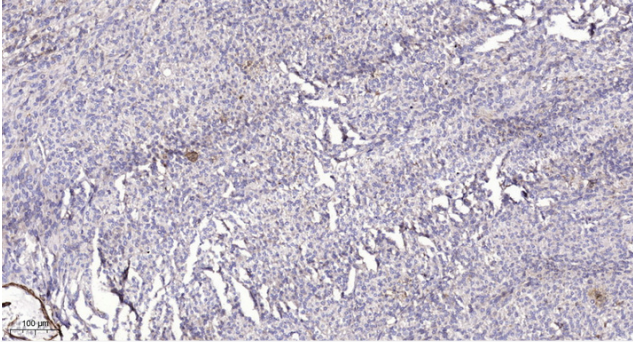


Western Blot analysis of various cells using PGE synthase Polyclonal Antibody diluted at 1:500



Western blot analysis of lysate from A549 cells, using PGE synthase antibody.

Nanjing BYabscience technology Co.,Ltd



Immunohistochemical analysis of paraffin-embedded human Colon cancer. 1, Antibody was diluted at 1:200(4° overnight). 2, Tris-EDTA,pH9.0 was used for antigen retrieval. 3,Secondary antibody was diluted at 1:200(room temperature, 45min).